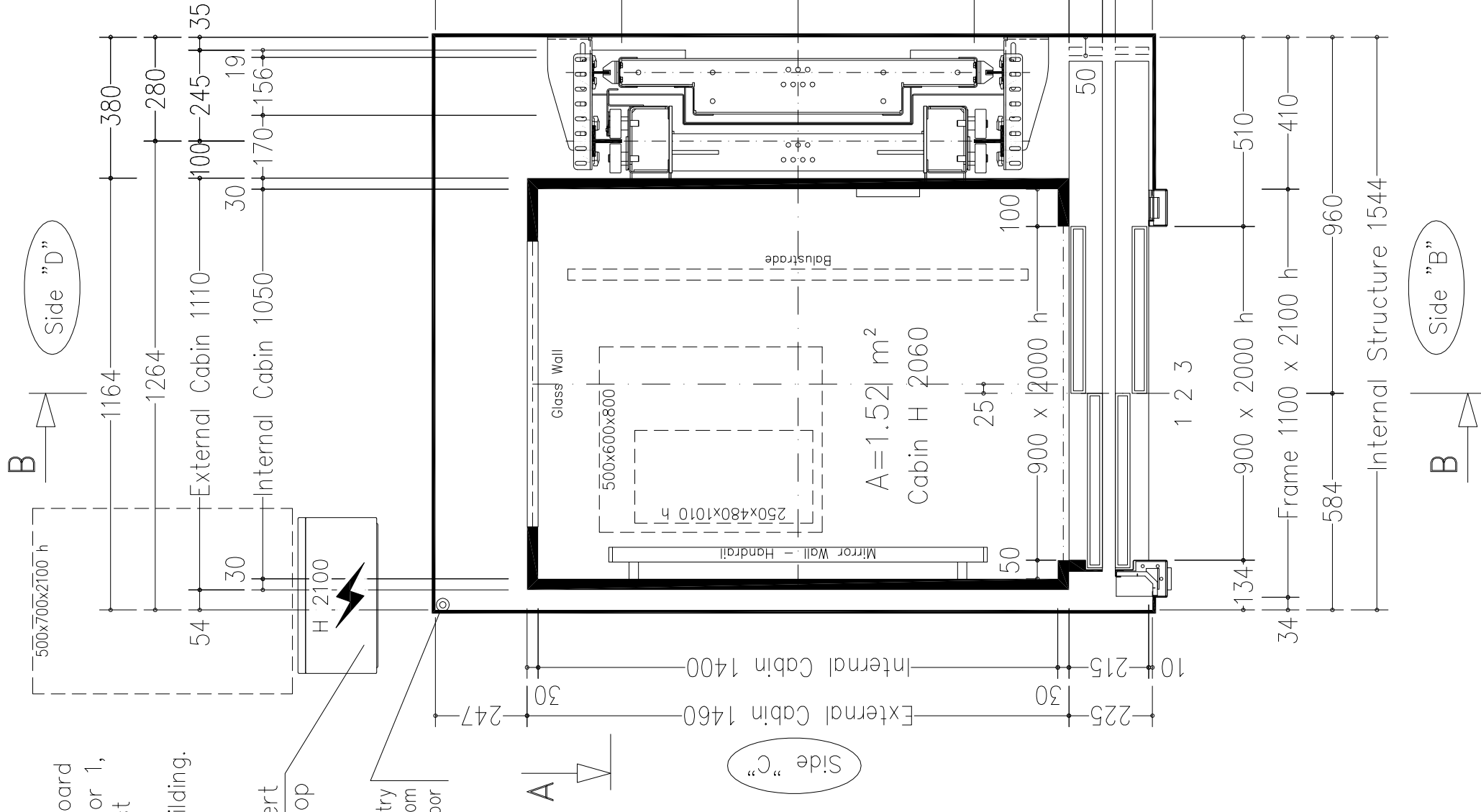


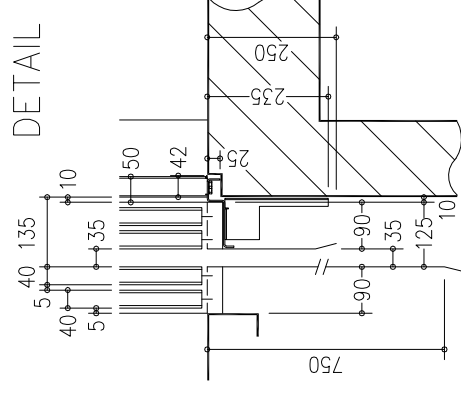
Handling switchboard (420x215) at floor 1, protected against water leaks and inside of the building.

Cables insert from the top

Cables entry h 2100 from floor



THRESHOLD



HOLES ON THE FLOOR FRAME
No. 3 HOLES:
-CALL PUSH BUTTON
-ALLARM LIGHT
-ENABLING KEY

NOTE:
-ELECTRIC PANEL WITH MICROCONTROLLER CARD AND MULTIVISION DISPLAY
STANDARD ACCESSORIES:
-REMOVABLE ENABLING KEY FOR THE CABIN BUTTON PANEL
-REMOVABLE ENABLING KEY FOR THE FLOOR BUTTON PANEL
-PUSH BUTTON PANEL VERTICAL
-POLISHED STAINLESS STEEL CABIN HANDRAIL
-CABIN OUTSIDE COVERING ON SIDES "D": POLISHED STAINLESS STEEL
NOT STANDARD ACCESSORIES:
-FULL HEIGHT INFRA-RED CURTAIN
-AUTO DIALER EXCLUDED
-CABIN PREPARED FOR FLOOR COVERING AT CUSTOMER EXPENSE (FLOOR THICKNESS 20 mm - MAX WEIGHT 50 Kg)

ATLANTIS - RW 429
Similinox F12PPS
INOX BA mecc.
ESCLUSO DALLA FORNITURA
Verticale a n° 6 fori
Faretti LED Similinox F12PPS - LED 24V
Similinox F12PPS (oper. Prisma "Micro Std")
Similinox F12PPS
Similinox F12PPS

cabin mass and operators (Kg) 429
cabin panels
finishings
floor
push button panel
roof
cabin doors colour
landing doors colour
frame landing doors colour
electrical s. cabinet colour

Shaft typology: METALLIC STRUCTURE AT CLIENT EXPENSE			Sheet		Scale		first draft		final drawing	
Stops:	3	Doors:	1/2	A3	1/15	D. Tomei	29/05/2013	D. Tomei	23/01/2014	DISEGNO DEFINITIVO
d interno struttura era 1930x1550. C Variante "Final Design Drawings": era muratura, corsa 7511, posizione armadio, pavimento cliente b Variante "Final Design Drawings": quadro elettrico era in posizione standard integrato nel telaio. a vano era 1760x1600 con cabina 1400x1100; aggiunto panoramico e specchio su corrimano; Q.E. era distante.										
Modifications P.T										

A

Side "A"

Side "B"

Side "C"

