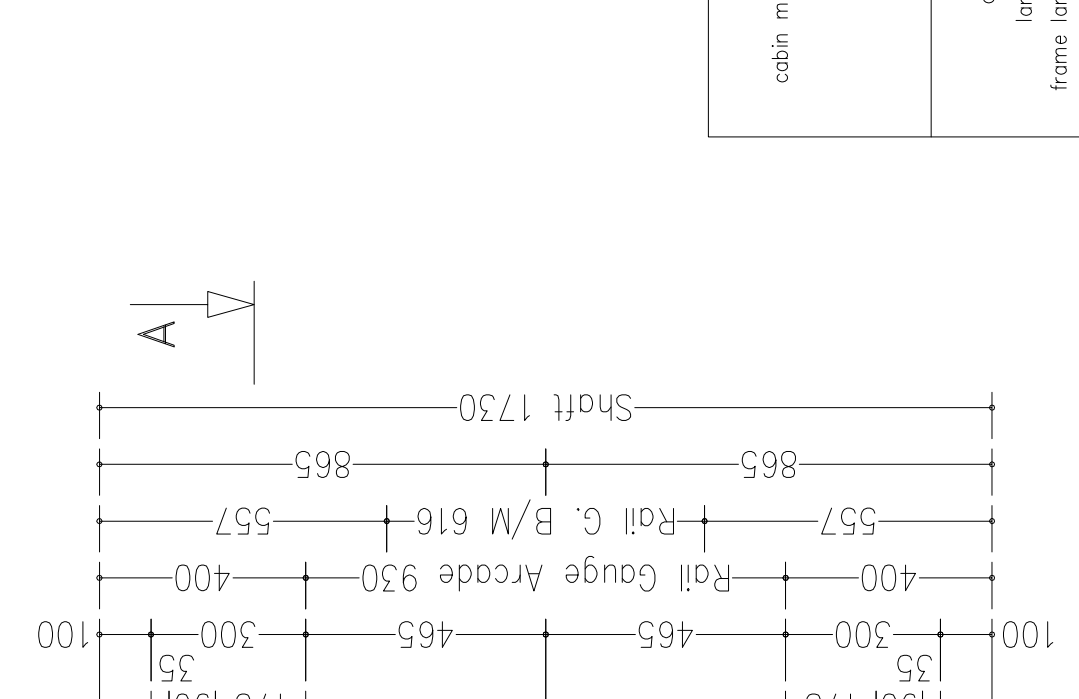


- NOTE:**
- ELECTRIC PANEL WITH MICROCONTROLLER CARD AND MULTIVISION DISPLAY
- NOT STANDARD:**
- CABIN PREPARED FOR FLOOR COVERING AT CUSTOMER EXPENSE (FLOOR THICKNESS 15 mm)
- STANDARD ACCESSORIES:**
- REMOVABLE ENABLING KEY FOR THE CABIN BUTTON PANEL
  - REMOVABLE ENABLING KEY FOR THE FLOOR BUTTON PANEL
  - PUSH BUTTON PANEL VERTICAL
  - DISPLAY ON THE LENDINGS
- NOT STANDARD ACCESSORIES:**
- FULL HEIGHT INFRA-RED CURTAIN
  - AUTO DIALER EXCLUDED
  - DOUBLES BATTERIES

- ATLANTIS - SM**
- cabin mass and operators (Kg) 435
  - panels INOX BA (Lucido)
  - finishings INOX BA (Lucido)
  - floor ESCLUSO DALLA FORNITURA
  - push button panel Verticale a n° 7 fori
  - roof Faretto LED INOX BA (Lucido)
  - cabin doors colour INOX BA (Lucido) (oper. Prisma "Micro Std")
  - landing doors colour INOX BA (Lucido)
  - frame landing doors colour INOX BA (Lucido)
  - electrical s. cabinet colour INOX BA (Lucido)



Shaft typology: <b>MASONRY</b>		Sheet dimension	Scale	Sheet	Doors:	first draft	FINAL DESIGN DRAWINGS	
Stops:	4	A3	1/2	1/15	D. Tomei	30/11/2010	final drawing	
Modifications	d						17/01/2012	
	c							
	b	Variante "Final Design Drawings": quadro elettrico era integrato nel telaio; aggiunto doppie batterie.						D. Tomei
	a	pannelli cabina erano inox SB; corsa era 9200.						D. Tomei
								MODEL
								<b>SUPERMEC</b>

Provide an inspectionable canalization to allow the way to the piping and to the electrical installation.

Handling switchboard at floor 1, protected against water leaks and inside of the building.

Max loads

blancing mass P	(N)	34175
arcade N	(N)	43593
motor equipment T	(N)	11533

Thrust during normal operation	Fx	(N)	1340
	Fy	(N)	460
	s	(N)	2100
	d	(N)	2100

Thrust of safety gear device intervention	Fx	(N)	3689
	Fy	(N)	766
	s	(N)	13783
	d	(N)	13783

reference directive  
maneuver  
95/16/CE  
universale

voltage of the battery charger  
batteries  
(V)  
220V  
12V 27Ah

reduction gear  
motor  
110 PAM 90 1/40  
TTN209D 42Vcc 2070W 66A 1100rpm

block brake  
930-480kg-m80x1160-H2410

arcade mass (Kg) 175  
balancing (%) 50  
balancing mass (Kg) 848

components of the balanc. mass  
suspension cables  
n° 10 pani e n° 168 piastre  
9x6  
length (mm) 13250  
minimum breaking load (N) 42100

balanc. mass shock absorbers  
cabin shock absorbers  
ETN 125 x 80  
ETN 125 x 80

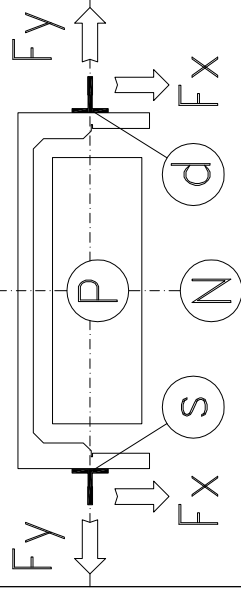
cabin guides  
balancing mass guides  
T70x70x9 x 12120 mm - staffe n° 10  
T50/A x 11920 mm

speed (m/s) 0,5  
load capacity (Kg) 480  
people capacity 6

Interfloors

3/4 = 3160 mm  
2/3 = 2910 mm  
1/2 = 3155 mm

THE QUOTES ON THE VERTICAL SECTIONS ARE NOT IN SCALE



FINAL DESIGN DRAWINGS  
final drawing 17/01/2012  
first draft 30/11/2010  
D. Tomei

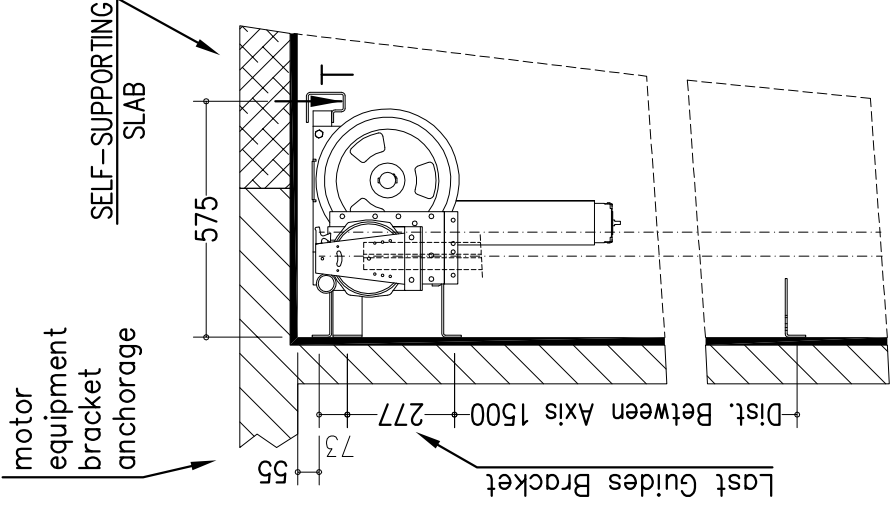
Scale 1/30  
Sheet dimension A3  
D. Tomei

Stops: 4  
Doors: 4  
Sheet 2/2

Shaft typology: MASONRY

Modifications:  
d.  
c.  
b. Variante "Final Design Drawings": quadro elettrico era integrato nel telaio; aggiunto doppie batterie.  
a. pannelli cabina erano inox SB; corsa era 9200.

MODEL SUPERMEC



NOTES FOR THE CUSTOMER

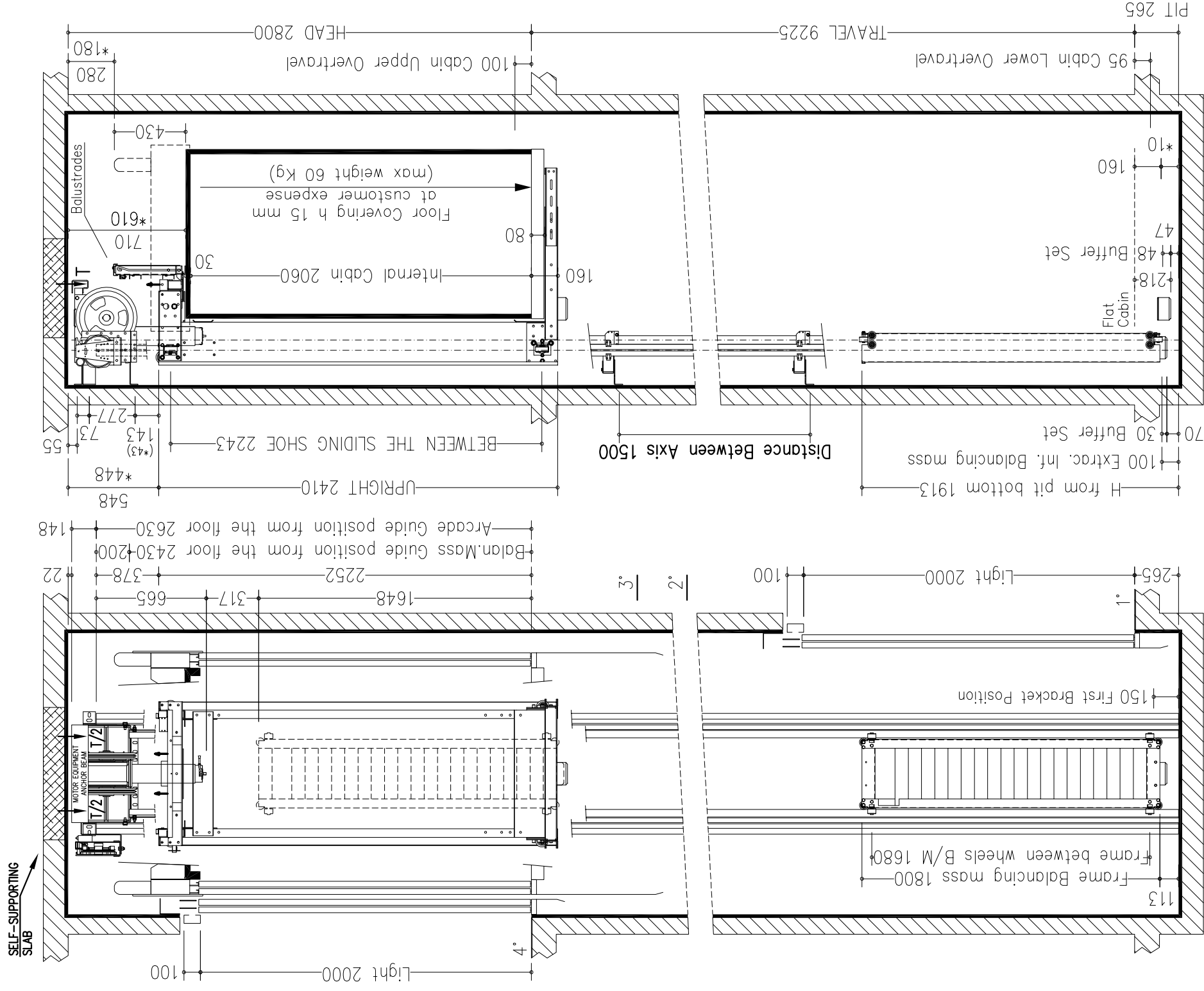
THE HORIZONTAL AND VERTICAL LOAD BEARING STRUCTURES MUST BE ABLE TO SUSTAIN THE LOADS INDICATED. THE HOISTWAY SHAFT MUST BE VENTILATED ACCORDING TO THE EXISTING NORMATIVES AND CONSTRUCTED IN ORDER THAT ALL EQUIPMENTS INSIDE IT ARE PROTECTED FROM DUST, UNHEALTHY VAPOUR AND HUMIDITY. THE DIMENSIONS OF THE LEVATOR SHAFT MUST BE GUARANTEED WITH AN ALLOWANCES OF 1 CM AND THE WALLS MUST BE PERFECTLY PLUMBED. IN THE CASE IN WHICH THE PIT IS MORE THAN 500 MM BUILT-IN STEPS ARE NECESSARY (140X100X400). THE CUSTOMER HAS TO WATERPROOF THE PIT AFTER THE FIXING OF THE EQUIPMENT IN THE PIT BOTTOM. THE PROJECT IS COMPILED IN ACCORDANCE TO THE EXISTING NORMATIVES.

FOR APPROVAL OF EVERYTHING CONCERNING THE MASONRY PARTS OF THE SHAFT.

DATE SIGN

SECTION A-A

VENTILATION ON THE TOP OF THE SHAFT COMPLYING TO THE EXISTING NORMATIVES



reinforced-concrete slab on embankment