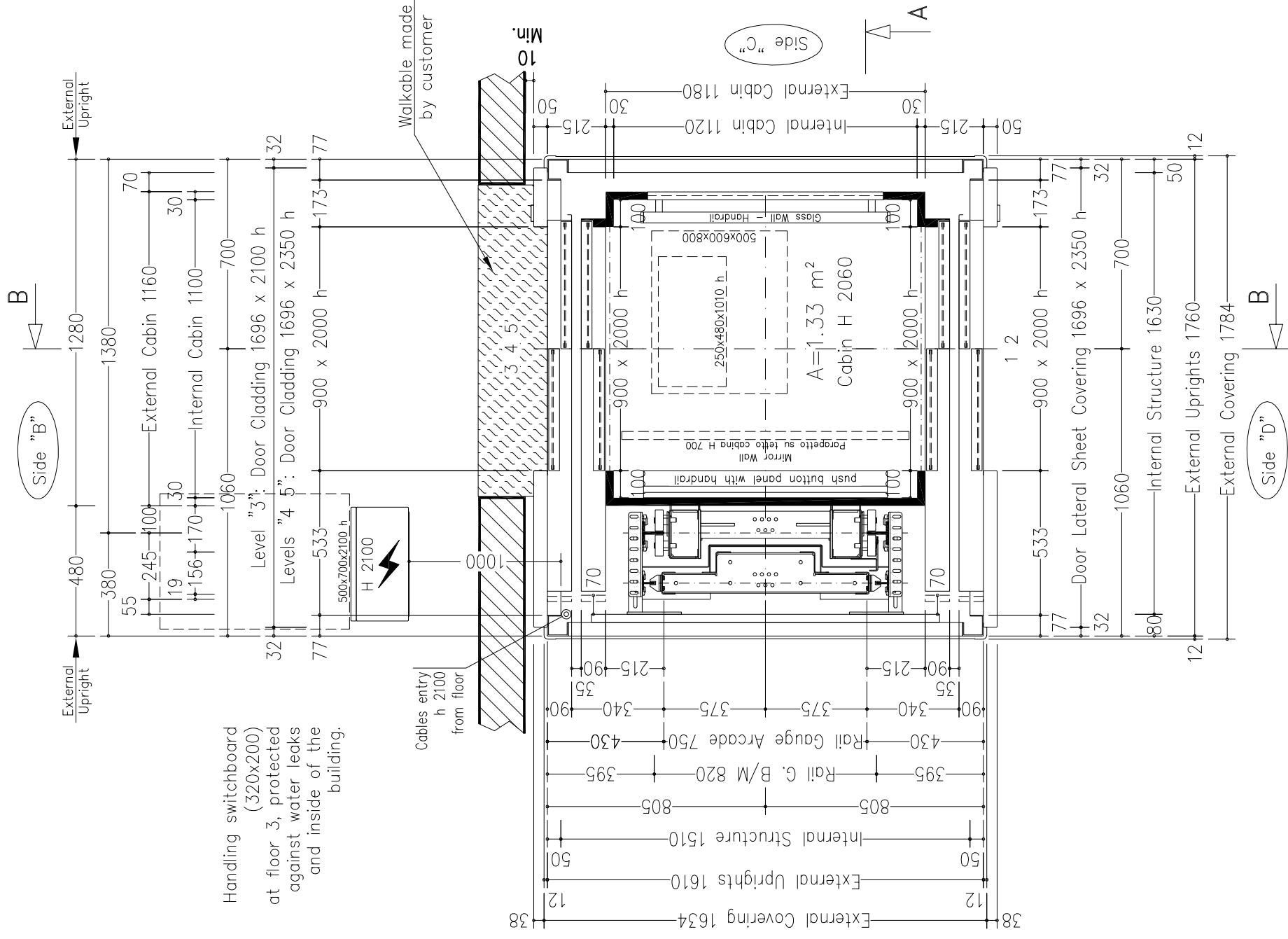


STRUCTURE NOTE

For the mounting of the structure infilling it needs a distance of min. 30 mm between the structure and the building.

BEAMS AND ACCESSORIES FOR ANCHORAGE NOT INCLUDED
(AT CUSTOMER EXPENSE)



CHARACTERISTICS OF STRUCTURE

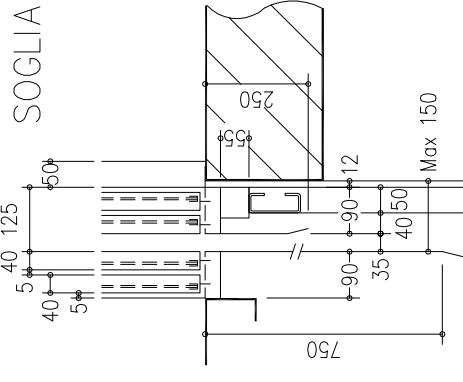
- External Structure without Covering.
- Structure from pit bottom.
- Structure: Galvanized + RAL 9006
- Sides "A", "C", "D": Panoramic glass covering: level "1" and all level "2" in Milk White Glass from level "3" to top in Fumè glass
- Side "B": Panoramic Milk White glass coverin.
- Door Cladding: Polished Stainless Steel Levels "1 2 4 5" h 2350 Level "3" h 2100

- Distance Between Axis 1,5 m
- guides length 14085 mm – Guides cut down size 2500 mm

Structure anchorage at customer expense, as per supplier prescribed modes:

- Headroom with min. 3 vertical legs.
- Along travel min 3 vertical legs with a pitch of max 3500 mm

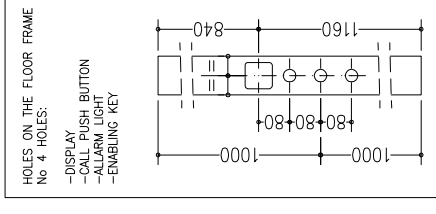
PARTICOLARE



cabin mass and operators	ATLANTIS – RW 415
panels	INOX BA (Lucido)
finishings	INOX BA (Lucido)
floor	Rocksolid Stone 671
push button panel	Orizzontale a n° 8 fori
roof	Faretti LED INOX BA (Lucido) – LED 24V
cabin doors colour	INOX BA (Lucido) con finestr. panoramica trasparente (oper. Prisma "Micro Std")
landing doors colour	INOX BA (Lucido) con finestr. panoramica trasparente
electrical s. cabinet colour	INOX BA (Lucido)

Shaft typology: METALLIC STRUCTURE INCLUDED

Sheet	1/2	Scale	1/20	first draft	20/06/2012	D. Tomei	final drawing	27/08/2013
Stops:	5	Doors:	5					
Sheet dimension	A3							
Modifications	d.							
	c.							
	b	corsa era 11370.						
	a	tipologia imp. da Supermec ad Energy; corsa era 11470; fossa era 350; modificato dim. struttura e accessori vari.						



NOTE:

- ELECTRIC PANEL WITH MICROCONTROLLER CARD AND MULTIVISION DISPLAY
 - LANDING DOORS WITHOUT FRAMES (ONLY LATERAL DOOR OF STRUCTURE)
- ### STANDARD ACCESSORIES:
- REMOVABLE ENABLING KEY FOR THE CABIN BUTTON PANEL
 - REMOVABLE ENABLING KEY FOR THE FLOOR BUTTON PANEL
 - CABIN HANDRAIL POLISHED STAINLESS STEEL
 - DISPLAY ON THE LANDINGS
 - CABIN OUTSIDE COVERING ON SIDE "C": POLISHED STAINLESS STEEL

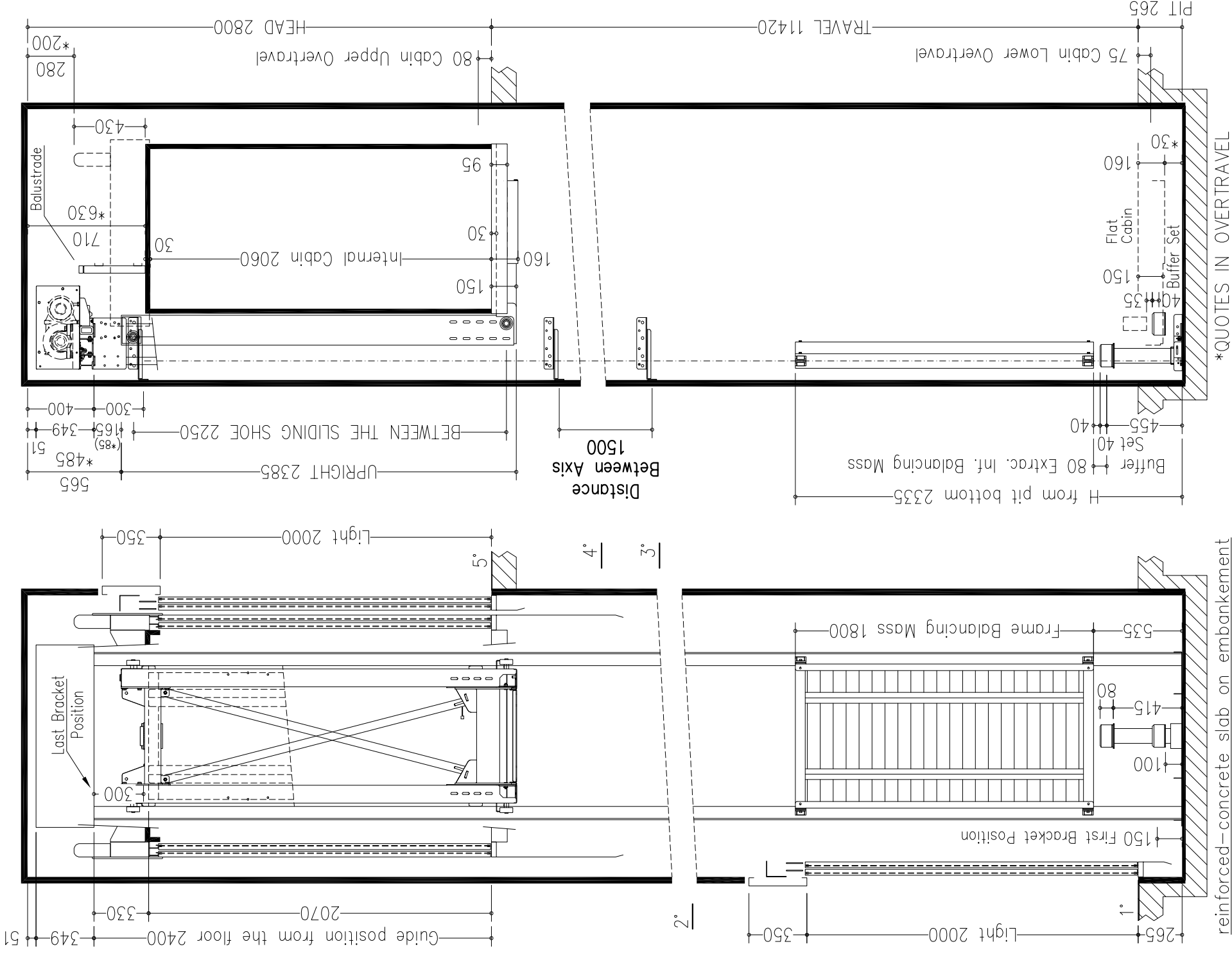
NOT STANDARD ACCESSORIES:

- FULL HEIGHT INFRA-RED CURTAIN
- PUSH BUTTON PANEL HORIZONTAL
- AUTO DIALER EXCLUDED

ENERGY

SECTION B-B

VENTILATION ON THE TOP OF THE SHAFT COMPLYING TO THE EXISTING NORMATIVES



reinforced-concrete slab on embankment

SM1608 EN001.30

blancing mass P (N) 28606
cabin N (N) 41979

Thrust during normal operation
Fx (N) 1675
Fy (N) 427
s (N) 6850
d (N) 6850

s' (N) 5833
d' (N) 5833

Thrust of safety gear device intervention
Fx (N) 2792
Fy (N) 3413
s (N) 1871
d (N) 22861

s' (N) 854
d' (N) 854

reference directive 95/16/CE
maneuver universale
voltage of the battery charger (V) 230V
batteries 12V 27Ah

reduction gear STM PLM65 1/21,1
motor TTN209D 42Vcc 2070W 66A
block brake 23 N/m - 24V

arcade 750-m120x1100-H2385
safety gear LVT2000 DX P+Q=1059-1231 KG n. 2

arcade mass (Kg) 155
balancing (%) 38
balancing mass (Kg) 707

components of the balanc. mass lamiere sp. 5 mm n° 234
suspension cables WOLF n° 6x6,5

length (mm) 15000
minimum breaking load (N) 31500

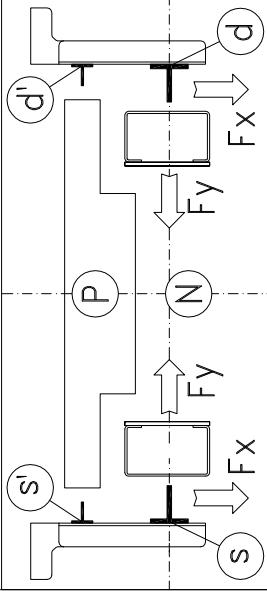
balanc. mass shock absorbers ETN 125 x 80
cabin shock absorbers ETN 125 x 80
cabin guides T80x80x9 x 14085 mm - staffe n° 11
balancing mass guides T45/A x 14085 mm

max speed (m/s) 0,5
load capacity (Kg) 480
people capacity 6

Interfloors

4/5 = 2880 mm
3/4 = 2590 mm
2/3 = 3130 mm
1/2 = 2820 mm

THE QUOTES ON THE VERTICAL SECTIONS ARE NOT IN SCALE



NOTES FOR THE CUSTOMER

THE HORIZONTAL AND VERTICAL LOAD BEARING STRUCTURES MUST BE ABLE TO SUSTAIN THE LOADS INDICATED. THE HOISTWAY SHAFT MUST BE VENTILATED ACCORDING TO THE EXISTING NORMATIVES AND CONSTRUCTED IN ORDER THAT ALL EQUIPMENTS INSIDE IT ARE PROTECTED FROM DUST, UNHEALTHY VAPOUR AND HUMIDITY. THE DIMENSIONS OF THE LEVATOR SHAFT MUST BE GUARANTEED WITH AN ALLOWANCES OF 1 CM AND THE WALLS MUST BE PERFECTLY PLUMBED. IN THE CASE IN WHICH THE PIT IS MORE THAN 500 MM BUILT-IN STEPS ARE NECESSARY (140X100X400). THE CUSTOMER HAS TO WATERPROOF THE PIT AFTER THE FIXING OF THE EQUIPMENT IN THE PIT BOTTOM. THE PROJECT IS COMPILED IN ACCORDANCE TO THE EXISTING NORMATIVES.

FOR APPROVAL OF EVERYTHING CONCERNING THE MASONRY PARTS OF THE SHAFT.

DATE SIGN

Shaft typology: METALLIC STRUCTURE INCLUDED

Stops: 5 Doors: 5 Sheet 2/2 Scale 1/30 D. Tomei

Sheet dimension A3

DISEGNO DEFINITIVO

final drawing 27/08/2013

D. Tomei

D. Tomei 27/08/2013

D. Tomei 19/07/2013

MODEL SUPERMEC