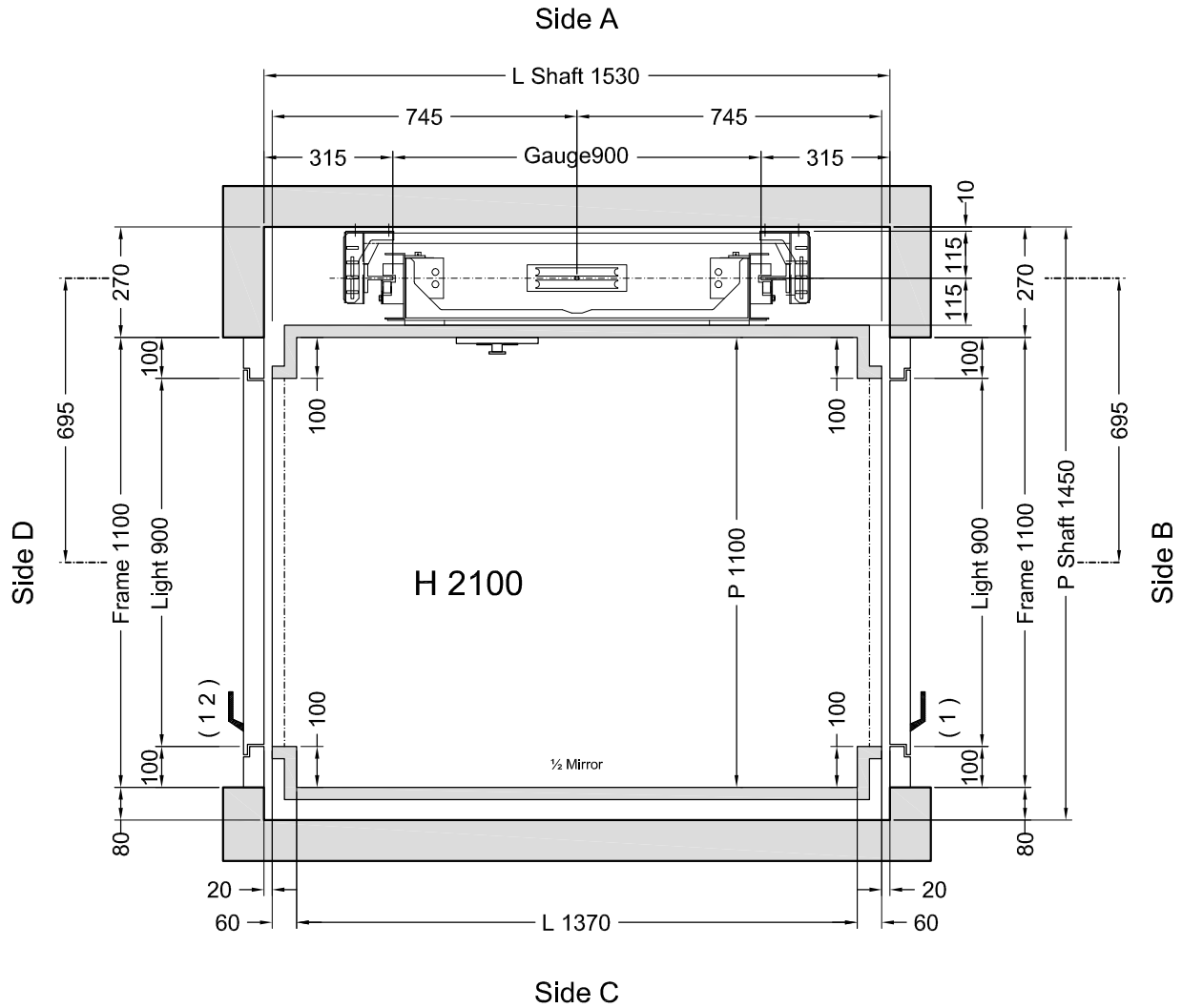


## FLOOR DOOR

Side B	Side C	Side D	VERSION	H LIGHT	H FRAME	WINDOW	GLASS	ACCESSORIES	C1	C2	PM	PE
1			Standard Rust-proof	2000	2100	Absent		Key Lock CISA		X		
		1 2	Standard Rust-proof	2000	2100	Absent				X		

C1 = Enabling key for the floor button pad (single insertion) C2 = Enabling key for the floor button pad (double insertion) PM = Button pad on the wall PE = Outside lock and button pad

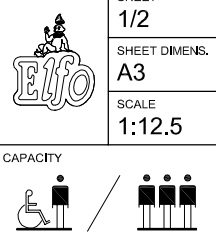


Pavimento a carico Cliente: Dim. 1430 (L) x 1100 (P) Spes. 12 mm Peso: 50 Kg  
(EN)

**Stops: 2 - Doors: 3**

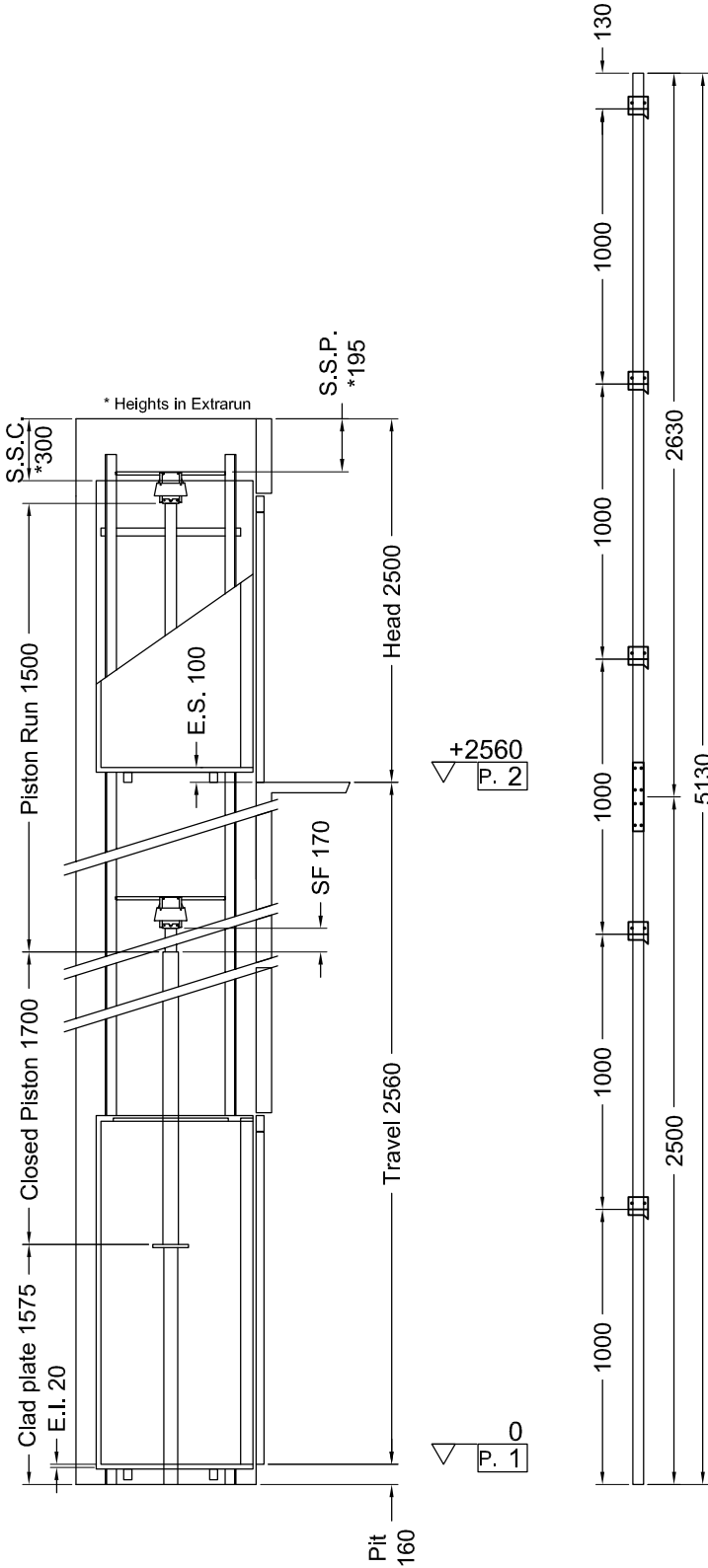
Shaft on **Masonry (Muratura)**

VERSIONS	Description	Designer	Date	Disegno Definitivo
	L.Vano/Cabina; No corrimano Lato D; Corsa.	L.Del Bianco	11/05/2010	
Varie modifiche.	L.Del Bianco	31/03/2010	SHEET DIMENS. A3	
Disegno Definitivo L.Del Bianco		1 <sup>o</sup> STESURA	11/05/10	SCALE 1:12.5
CAPACITY		AREA m <sup>2</sup>	CAPACITY	
350 Kg		1,51		



**ACCESSORI:**

- Chiave abilitazione pulsantiera cabina a doppia estrazione
- Guide in barre da 2,5 m
- Pompa a mano
- Pressostato con segnalazione di sovraccarico
- Doppia velocità
- Manovra Automatica
- Arcata rinforzata
- Maniglie porte escluse dalla fornitura
- Fotocellula tutta parete



Indirect Installaton	Speed 0,3 m/s	11/05/10 17.51	(V.2204)
----------------------	---------------	----------------	----------

THRUST DURING NORMAL OPERATION				THRUST OF SAFETY DEVICE INTERVENT.			
P	(N)	11007		P	(N)	461	
N	(N)	463		N	(N)	7339	
F1	(N)	1661		F1	(N)	2768	
F2	(N)	425		F2	(N)	708	

SPACES		PRESSURES		
E.I.	Extrarun below cabin (mm)	20	Max static pressure (bar)	35,7
E.S.	Extrarun above cabin (mm)	100	Min static pressure (bar)	17,86
SF.	Piston extraction (mm)	170	Overpressure limit (bar)	49,98
S.S.P.	Piston/head (mm)	195	Residual pressure (bar)	1,2
S.S.C.	Cabin/head (mm)	300		

HYDRAULIC UNIT		MECHANICAL PARTS	
Central unit	Start 96SLE	Runners	T70-2A
Capacity (l/min)	35	Brackets	(Nr) 5
Motor (V)	MF220V	Cables	9 mm 6-(1+9+9)
Power (Kw)	3	Cables lenght (mm) 2 x	7600
Piston	Start Elevator(ø) 70x5x1500	Min actual breaking load (N)	42100
Opt. oil position	basso		
Tubing	Start		
Tubing lenght (mm)	8000		
Min hydraulic oil (L)	35		


SECURITY DEVICES	Manufacturer	Model	Certificate
Safety Gear	PFB	BP1	TÜV AFV515
Block Valve	Start	1/2"03026/01;03026/02	IMQ CA50.00526
Key Locks	TIEFFE	TIEFFE2000	IMQ I0110

MACHINERY LOCATION			
At floor	1	Away from shaft (mm)	4000
Cables enter in shaft: Side	A		

CABIN		CABIN ACCESSORIES	
Panels	Lamiera zincata	½ Mirror	Lati C
Finishes	Inox Oro Pallinato		
Oper. panel	A COLONNA (Inox Oro Pallinato)		
Floor	a carico Cliente		
Roof	FARETTI-Inox Oro Pallinato		

OTHER ACCESSORIES
Enabling key for the cabin button pad, double insertion
Guides dimension 2.5 m
Manual pump
Manostat with overweight signal
Double speed
Automatic control
Reinforced arcade
Doors without handles
Full height infra-red curtain

Le informazioni contenute nel presente disegno sono integrate dal manuale opere murarie.

	Disegno Definitivo	1° STESURA
	L. Del Bianco	11/05/10
	<b>Disegno Definitivo</b>	
SCALE	SHEET	
OUT OF SCALE	2/2	