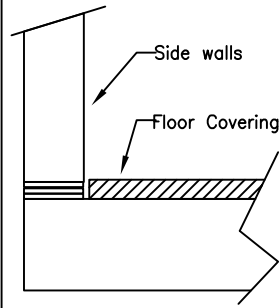
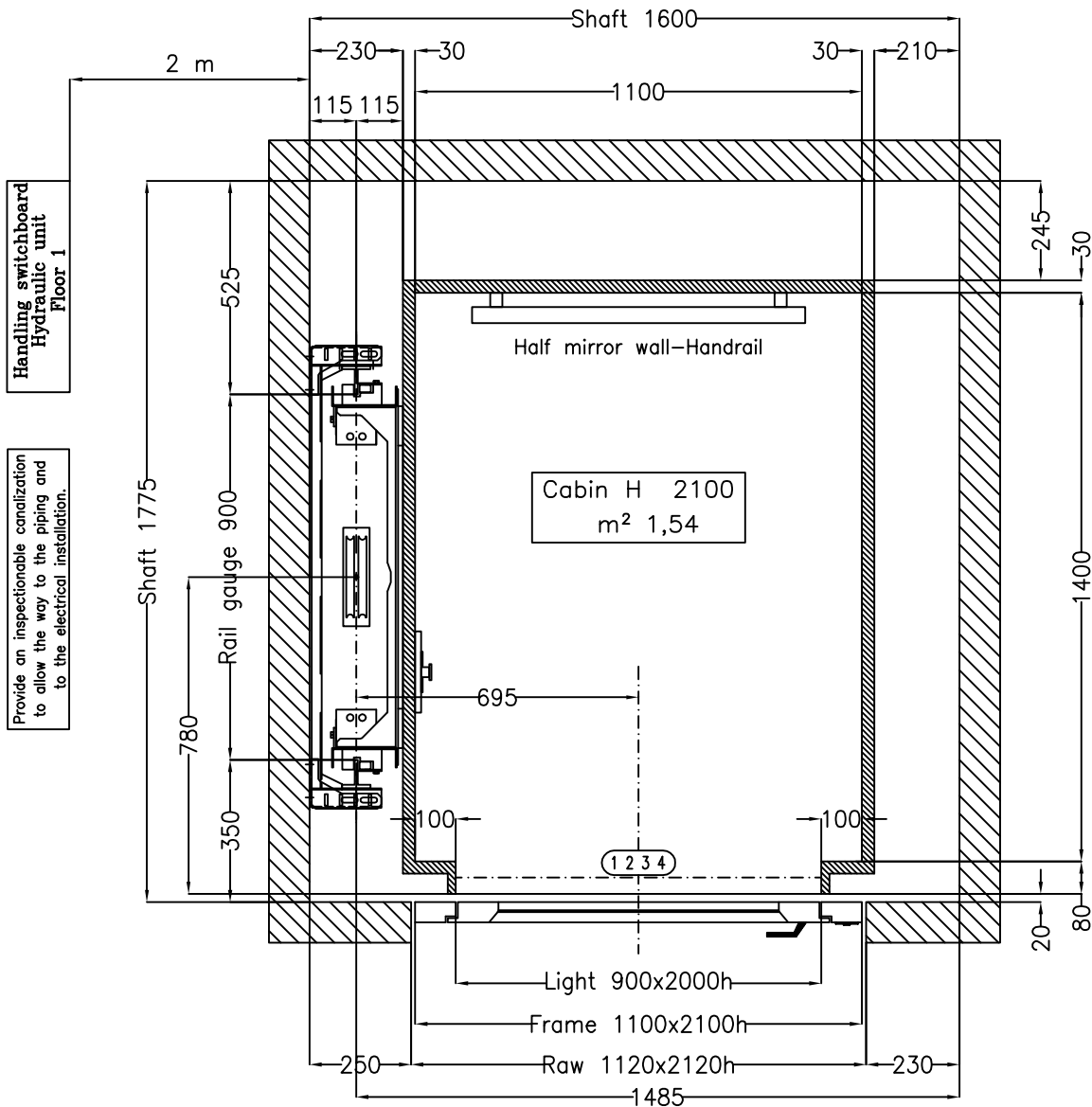
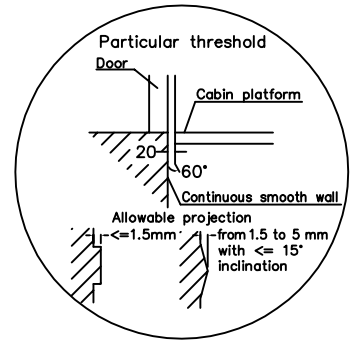


The Floor Covering has to be put inside the cabin to allow the installing of the walls on the relative thickness



**NOT STANDARD**

Brushed Stainless Steel Handrail  
Floor Cabin Prepared for  
Customer Covering th. 15 mm Max 50 kg



EL

Shaft: Reinforced Concrete - Cemento Armato

Disegno Definitivo

SHEET DIMENSION  
A3

DATE OF  
MODIFICATIONS

Stops: 4

Doors: 4

Check that the characteristics given in the technical drawing are in accordance with the order form

Modifications

d	.	.
c	.	.
b	.	.
a	Corsa da 9,6 a 9,9 m; Interpiani; Fossa 200 mm; Fotocellula Tutta Parete; Faretto-Grigio.	06.03.2008

**HOISTWAY  
NOTES FOR THE CLIENT**

- Load bearing structures of the hoistway must be able to sustain the loads indicated. The dimensions of the elevator shaft must be guaranteed with allowances of ± 1 cm. and the walls must be perfectly plumbed
- We suggest making ventilation ducts with surfaces of at least 1% of the horizontal section of the hoistway.
- The pit must be protected against water leaks.

OPDFP NUMPTP	MODEL ELFO AEP3 Indirect	SPEED 0,30 m/s	Disegno Definitivo Luca Del Bianco
	Order 30035/2	CAPACITY 350 kg	Date of first draft 28.02.08

Scale  
1/12.5

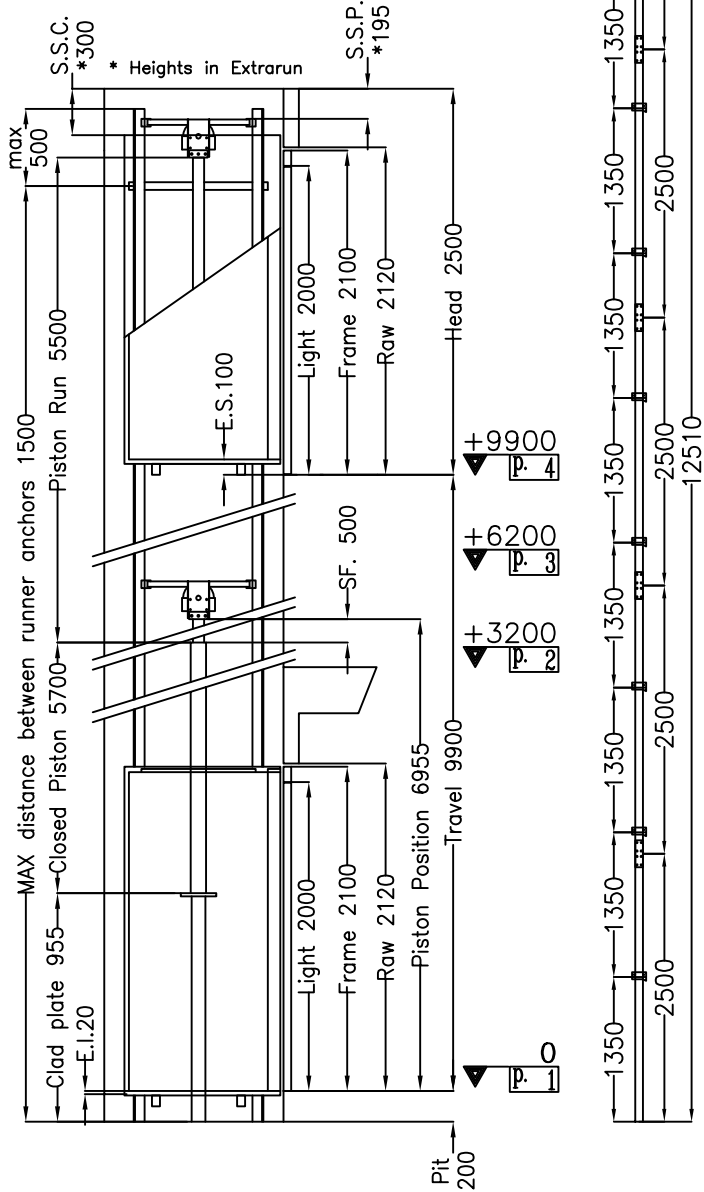
Sheet  
1/2



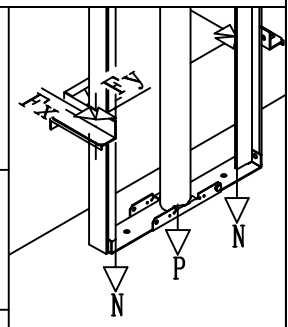
Elevatori Premonati

**Accessori:**  
 Chiave abilitazione pulsantiera di cabina a doppia estrazione  
 Fotocellula/e tutta parete  
 Chiave di abilit. Pulsantiera di piano D.E.: 1 2 3 4  
 Barre guide da 2,5 m  
 Impianto con pressostato  
 Portata >300 kg  
 Pompa a mano  
 Arcata rinforzata - Mensola tipo UK  
 Manovra Automatica  
 Velocità Nominale 0,30 m/s  
 Parete Metà Specchio Lato 2  
 Corrimano Lato 2 - Inox S.B.

THE LIFT HAS VALUE ONLY FOR THE VERTICAL HEIGHTS SHOWN



Indirect Installation	Ver. 20.07.07
Thrust during normal operation	06.03.08 - 15:40
P (N)	10966
N (N)	1115
Fx (N)	1360
Fy (N)	400
Thrust of safety device intervention	
P (N)	967
N (N)	7371
Fx (N)	2523
Fy (N)	0
Pressures	
max static pressure (bar)	35,48
min static pressure (bar)	17,64
overpressure limit (bar)	49,67
residual pressure (bar)	2,51
Spaces	
extrarun below cabin E.I. (mm)	20
extrarun above cabin E.S. (mm)	100
piston extraction SF. (mm)	500
piston/head S.S.P. (mm)	195
cabin/head S.S.C. (mm)	300
Hydraulic unit	
piston MORIS 9130	
diam. (mm)	70x7,5
total piston run (mm)	5500
closed piston (mm)	5700
opt. oil position	basso
central unit MORIS CM3A	
capacity (l/min)	35
motor (V)	220
power (Hp)	4,5
tubing ø1"1/4 R2 AT FD+F90° M45X2	
length (mm)	6000
hydraulic oil	
min. litres (L)	95
Mechanical parts	
runners T70/2A	
length (mm)	12510
brackets (qt.)	9
cables 9 mm (S 114+1)	
length (mm)	2 x 14900
Minimum actual breaking load (N)	40100
zinc clad plate 88.9	
length (mm)	955
arcade AEP3 scart.900 mens.131 mont.2100 cil. 70	
Pilot Cable (mm)	18000
Cabin	
panels	Inox Scotch Brite
finishes	Inox Scotch Brite
floor rivest.	Cliente 15 mm
operator panel	Inox Scotch Brite - Verticale Cod.T7
ceiling	FARETTI N1 Grigio
Lobby doors:	<input checked="" type="checkbox"/> All Galvanized Rust Proof Covered Brushed S.S. <input type="checkbox"/> Panoramic Transparent Glass <input type="checkbox"/> Tubular handles model Caspim



Check that the characteristics given in the technical drawing are in accordance with the order form

Disegno Definitivo		VIEW	Disegno Definitivo	DATE OF MODIFICATIONS
			Luca Del Bianco	
Modifications	d .			
	c .			
	b .			
	a	Corsa da 9,6 a 9,9 m; Interpiani; Fossa 200 mm; Fotocellula Tutta Parete; Faretto-Grigio.		06.03.2008
DATE	SHEET	CAPACITY: 350 kg		
28.02.08	2/2	Security Devices		
		Safety Gear	TUV AFV515	
		Manufacturer:	PFB - BP1	
		Block Valve	IMQ IO222	
		Manufacturer:	MORIS - 0825/P	
		Key Locks	IMQ IO110	-
		Manufact.:	Tieffe-Tieffe 2000	-

**Accessories:**  
 Activation Key for Cabin Button Panel with Double Insertion  
 Full Height Infra-red Curtain/s  
 Activation Key for Floor Button Pad D.I.: 1 2 3 4  
 Guides bars dimension 2,5 m  
 Installation with Pressostat  
 Capacity >300 kg  
 Hand Pump  
 Reinforced Arcade - Bracket type UK  
 Automatic Control  
 Nominal Speed 0,30 m/s  
 Sidewall Half Mirror Side 2  
 Handrail Side 2 - Inox S.B.

