

**NOT STANDARD:**  
 - CABIN PREPARED FOR FLOOR COVERING AT CUSTOMER EXPENSE (FLOOR THICKNESS 15 mm)

**STANDARD ACCESSORIES:**  
 - REMOVABLE ENABLING KEY FOR THE CABIN BUTTON PANEL  
 - REMOVABLE ENABLING KEY FOR THE FLOOR BUTTON PANEL  
 - PUSH BUTTON PANEL VERTICAL

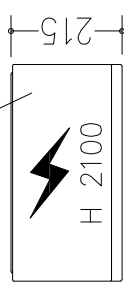
**NOT STANDARD ACCESSORIES:**  
 - FULL HEIGHT INFRA-RED CURTAIN  
 - AUTO DIALER EXCLUDED

cabin mass and operators panels	ATLANTIS - SM 432
finishings	INOX Scotch Brite
floor	INOX Scotch Brite
push button panel	ESCLUSO DALLA FORNITURA Verticale a n° 7 fori
roof	Disegno Labirint Bianco A1
cabin doors colour	INOX Scotch Brite con fin. pan. trasp. (oper. CMM-E.2006)
landing doors colour	INOX Scotch Brite con finestr. panoramica trasparente
frame landing doors colour	INOX Scotch Brite
electrical s. cabinet colour	Similinox F12PPS

Provide an inspectionable canalization to allow the way to the piping and to the electrical installation.

Handling switchboard at floor 1, protected against water leaks and inside of the building.

Cables insert from the top



500x700x2100\_h

**Max loads**

blancing mass P	(N)	33731
arcade N	(N)	43278
motor equipment T	(N)	11463

**Thrust during normal operation**

Fx	(N)	1331
Fy	(N)	864
s	(N)	1555
d	(N)	1555

**Thrust of safety gear device intervention**

Fx	(N)	3664
Fy	(N)	1440
s	(N)	13159
d	(N)	13159

reference normatives maneuver  
pr EN81.21 (2006) universale

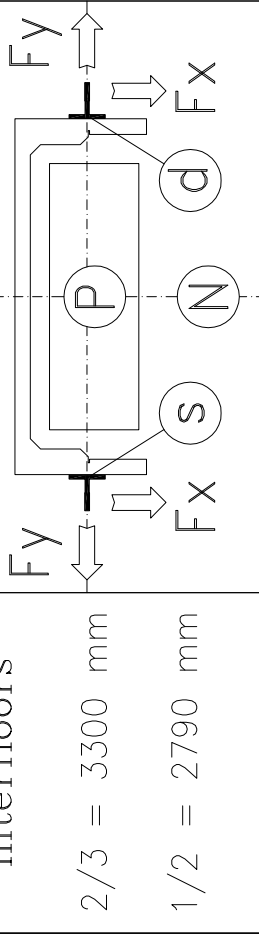
voltage of the battery charger batteries (V) 220V  
FIAMM-GS FG22703 12V 27Ah

reduction gear motor (110 PAM 90 1/49 STM)  
DAGU EE302 c.c. 40 V  
block brake (12 N\m - 24 V)

arcade (930-480kg-m80x1160-H2410)  
arcade mass (Kg) 175  
balancing (%) 49  
balancing mass (Kg) 845  
n° 10 pani e n° 167 piastre  
suspension cables ALIOTO 9x6  
length (mm) 10100  
minimum breaking load (N) 42100

balanc. mass shock absorbers (ETN 125 x 80)  
cabin shock absorbers (ETN 125 x 80)  
cabin guides (GF770 x 8970 mm - staffe n° 9)  
balancing mass guides (RF50 x 8770 mm)

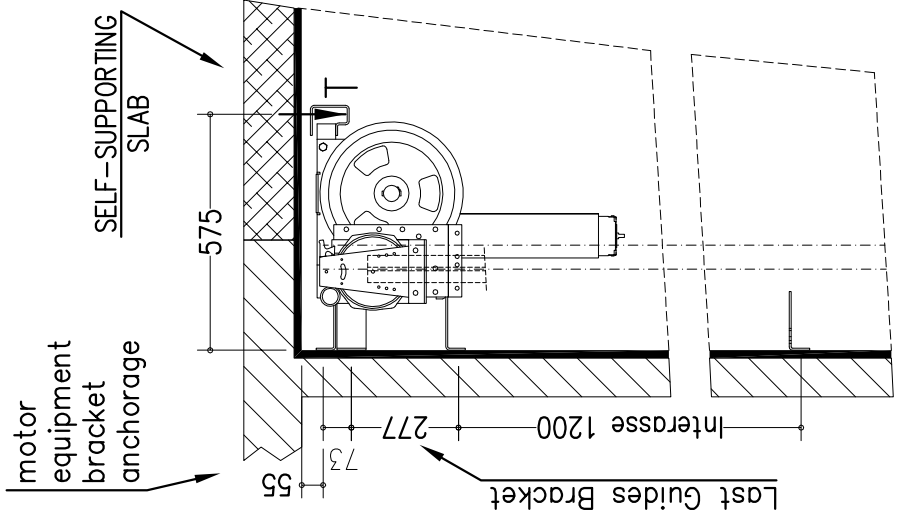
speed (m/s) 0,3  
load capacity (Kg) 480  
people capacity 6



**FINAL DESIGN DRAWINGS**

Sheet dimension	A3	Scale	1/30	D. Tomei	30/04/2010
Stops:	3	Doors:	3	Sheet	2/2
Shaft typology:	MASONRY				
first draft	30/04/2010				
final drawing	06/09/2010				

customer: LIFT SHOP  
Place of installation: \_\_\_\_\_



**NOTES FOR THE CUSTOMER**

THE HORIZONTAL AND VERTICAL LOAD BEARING STRUCTURES MUST BE ABLE TO SUSTAIN THE LOADS INDICATED. THE HOISTWAY SHAFT MUST BE VENTILATED ACCORDING TO THE EXISTING NORMATIVES AND CONSTRUCTED IN ORDER THAT ALL EQUIPMENTS INSIDE IT ARE PROTECTED FROM DUST, UNHEALTHY VAPOUR AND HUMIDITY. THE DIMENSIONS OF THE LEVATOR SHAFT MUST BE GUARANTEED WITH AN ALLOWANCES OF 1 CM AND THE WALLS MUST BE PERFECTLY PLUMBED. IN THE CASE IN WHICH THE PIT IS MORE THAN 500 MM BUILT-IN STEPS ARE NECESSARY (140X100X400). THE CUSTOMER HAS TO WATERPROOF THE PIT AFTER THE FIXING OF THE EQUIPMENT IN THE PIT BOTTOM. THE PROJECT IS COMPILED IN ACCORDANCE TO THE EXISTING NORMATIVES.

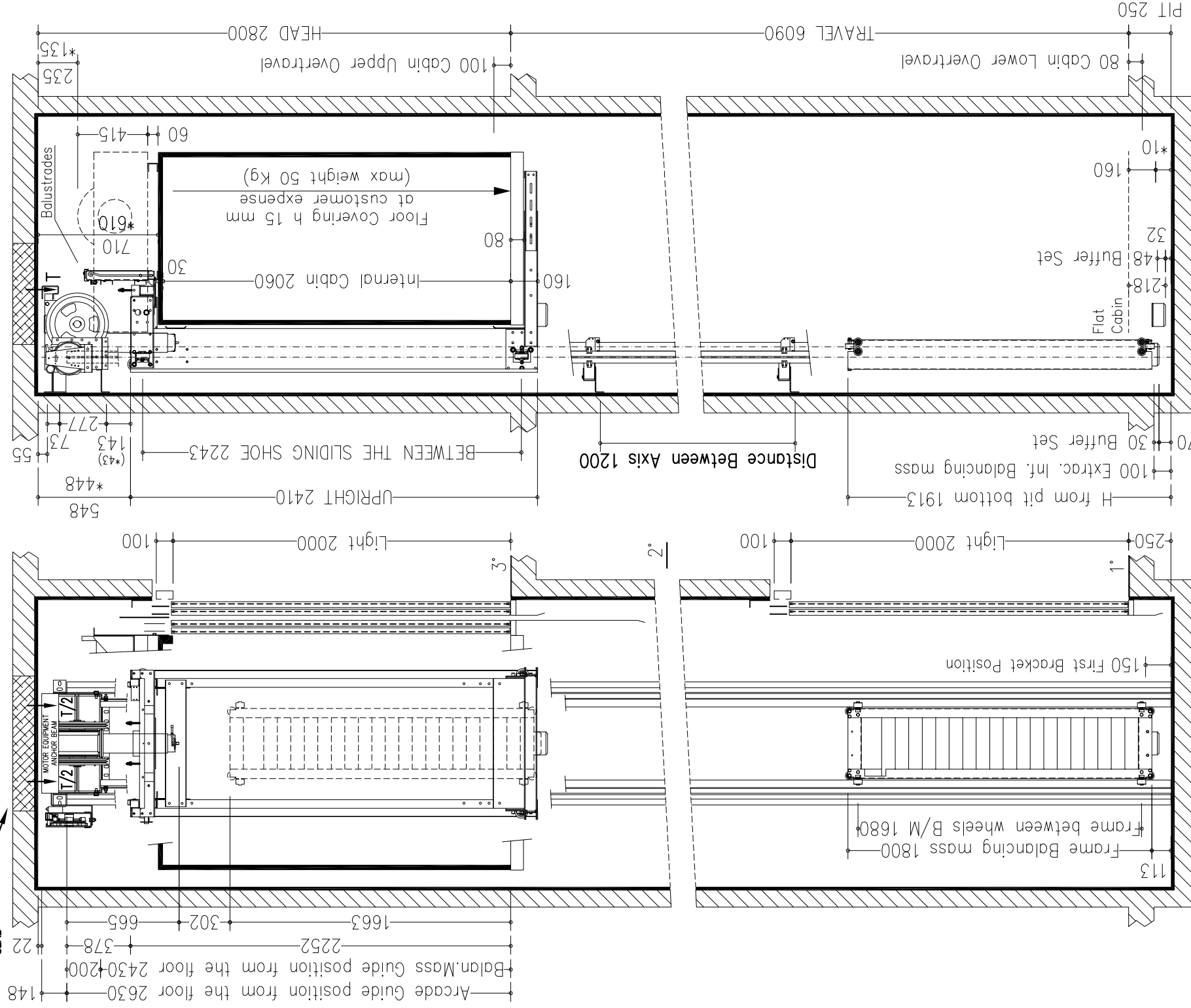
FOR APPROVAL OF EVERYTHING CONCERNING THE MASONRY PARTS OF THE SHAFT:

DATE \_\_\_\_\_ SIGN \_\_\_\_\_

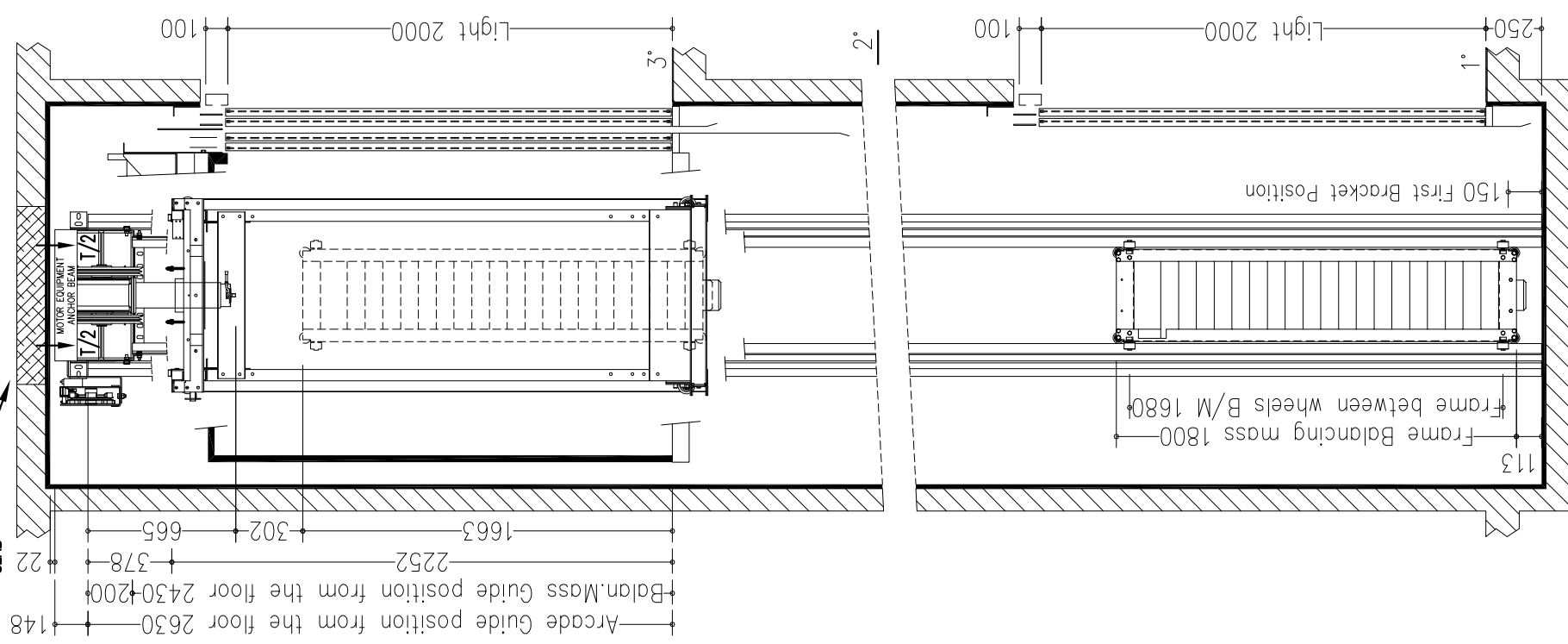
Modifications:

d.	
c.	
b.	
a.	Q.E. era in posizione standard in inox S.B.; corsa era 6000.

**SECTION A-A**  
VENTILATION ON THE TOP OF THE SHAFT COMPLYING TO THE EXISTING NORMATIVES



**SECTION B-B**  
VENTILATION ON THE TOP OF THE SHAFT COMPLYING TO THE EXISTING NORMATIVES



reinforced-concrete slab on embankment



CUSTOMER

LIFT SHOP

Place of installation