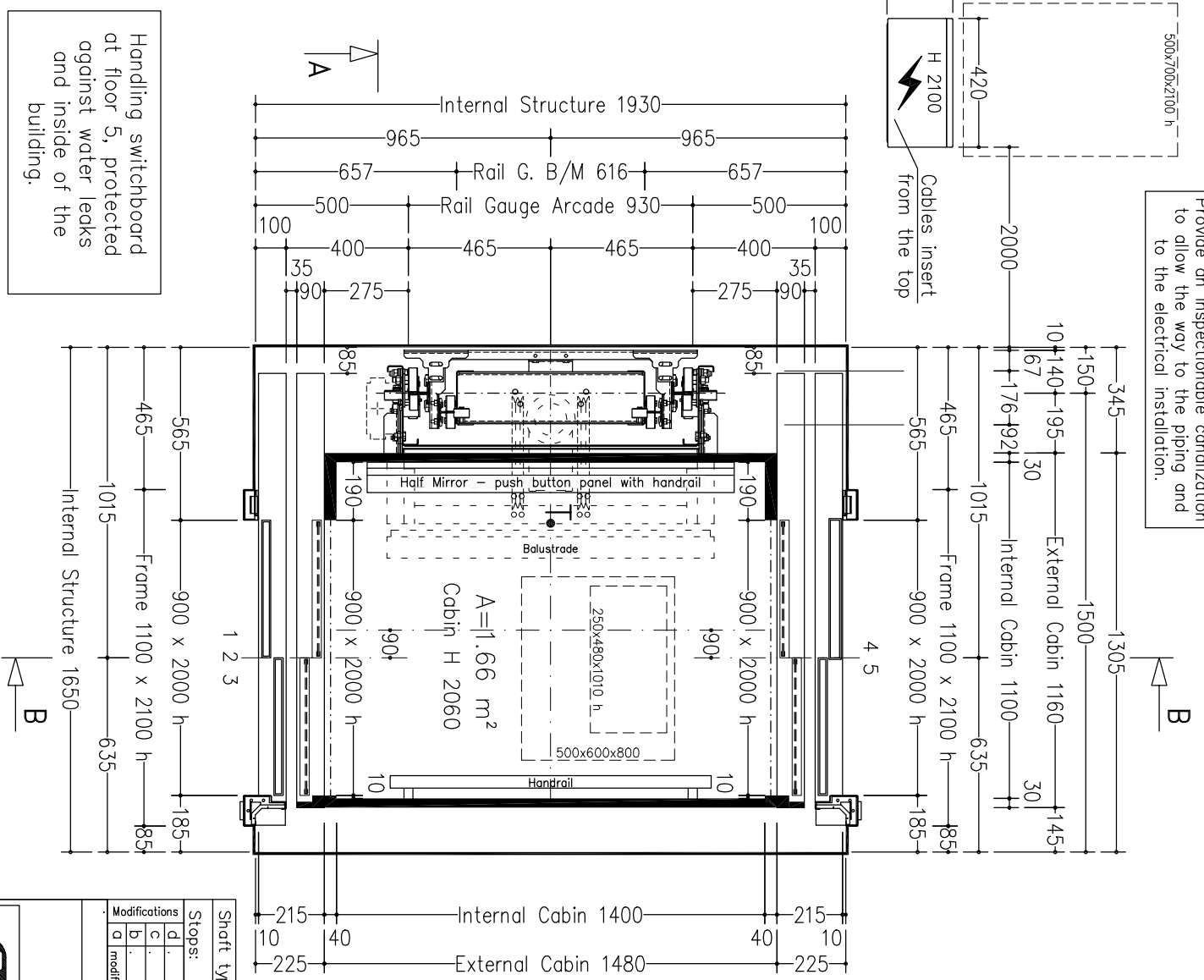
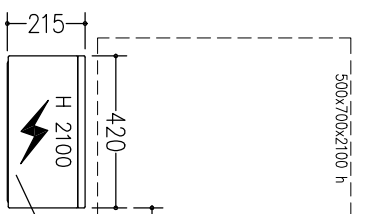
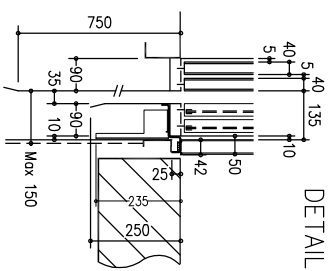
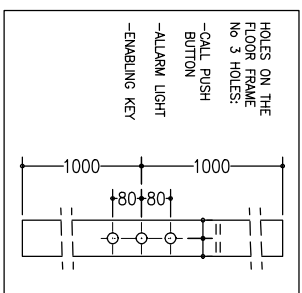


Provide an inspectionable canalization to allow the way to the piping and to the electrical installation.



Handling switchboard at floor 5, protected against water leaks and inside of the building.



THRESHOLD
DETAIL

The structure have to support the efforts you find in sheet 2/2 (at customer expense)

NOT STANDARD:
- CABIN PREPARED FOR FLOOR COVERING AT CUSTOMER EXPENSE (FLOOR THICKNESS 15 mm)

STANDARD ACCESSORIES:
- REMOVABLE ENABLING KEY FOR THE CABIN BUTTON PANEL
- REMOVABLE ENABLING KEY FOR THE FLOOR BUTTON PANEL

NOT STANDARD ACCESSORIES:
- FULL HEIGHT INFRA-RED CURTAIN
- PUSH BUTTON PANEL HORIZONTAL

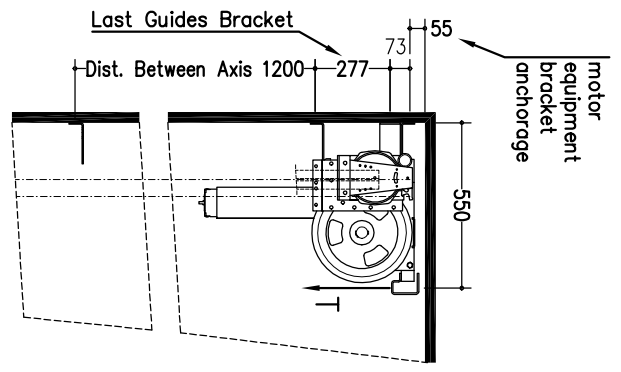
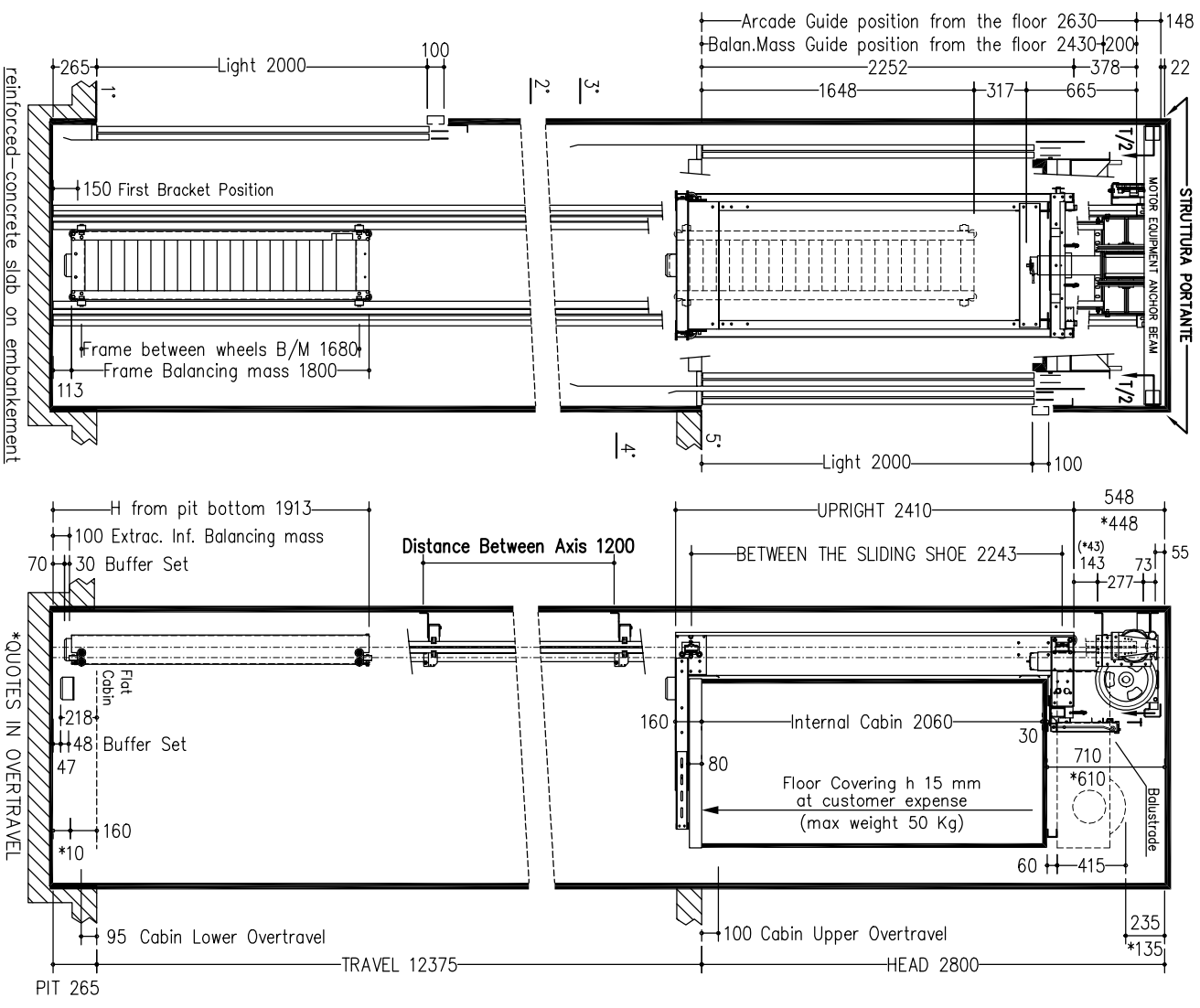
cabin mass and operators (Kg)		cabin panels		cabin doors colour		roof		cabin doors colour		roof	
511		Avorio PPS11		NOX BA (Lucido)		Foretti Bianco Al		NOX BA (Lucido)		Foretti Bianco Al	
511		INOX Scotch Brite		NOX BA (Lucido)		Orizzontale a n° 8 fori + GONG		NOX BA (Lucido)		Orizzontale a n° 8 fori + GONG	
511		ESCLUSO DALLA FORNITURA		NOX BA (Lucido)		con vetro trasparente (oper. GMM-E.2006)		NOX BA (Lucido)		con vetro trasparente (oper. GMM-E.2006)	
511		Orizzontale a n° 8 fori + GONG		NOX BA (Lucido)				NOX BA (Lucido)			
511		Similinox FT2PPS		Similinox FT2PPS				Similinox FT2PPS			

Shaft typology: METALLIC STRUCTURE AT CLIENT EXPENSE											
Stops: 5 Doors: 5 Sheet 1/3 Sheet dimension A3 Scale 1/15 D. Torniè first draft 25/08/2008 final drawing 16/04/2009											
Modifications											
a modificato accessori cabina; armadio da vicino all'ingresso a distanza; fasso da 250 a 265.											
CUSTOMER LIFT SHOP											
MODEL SUPERMEC											
D. Torniè											



SECTION B-B
VENTILATION ON THE TOP OF THE SHAFT COMPLYING TO THE EXISTING NORMATIVES

SECTION A-A



	CUSTOMER		LIFT SHOP	
	Shaft typology: METALLIC STRUCTURE AT CLIENT EXPENSE			
Modifications	Stops:	Doors:	Sheet	Scale
d	5	5	2/3	1/30
c				D. Tonnel
b				25/08/2008
d				D. Tonnel
modificato accessori cabina; armadio da vicino all'ingresso a distanza; fossa da 250 a 265.				
			first draft	final drawing
			25/08/2008	16/04/2009
			D. Tonnel	D. Tonnel
			MODEL	SUPERMEC

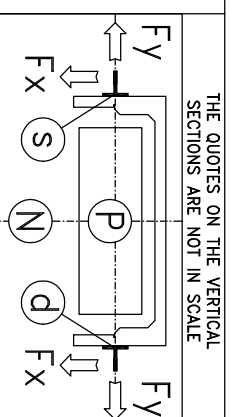
NOTES FOR THE CUSTOMER

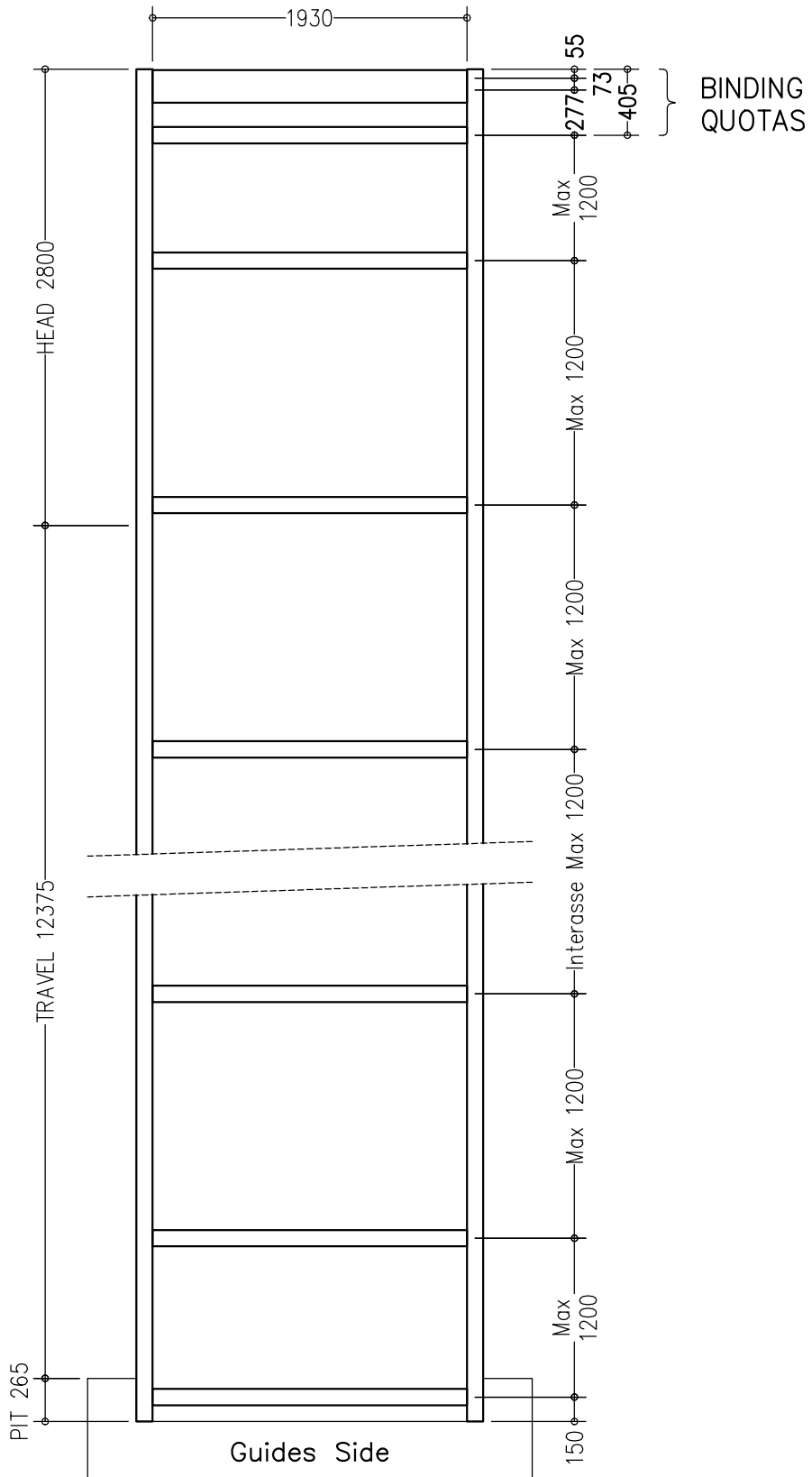
THE HORIZONTAL AND VERTICAL LOAD BEARING STRUCTURES MUST BE ABLE TO SUSTAIN THE LOADS INDICATED. THE HOISTWAY SHAFT MUST BE VENTILATED ACCORDING TO THE EXISTING NORMATIVES AND CONSTRUCTED IN ORDER THAT ALL EQUIPMENTS INSIDE IT ARE PROTECTED FROM DUST, UNHEALTHY VAPORS AND HUMIDITY. THE DIMENSIONS OF THE ELEVATOR SHAFTS MUST BE COMPATIBLE WITH AN ELEVATOR OF THE EXISTING TYPE. THE ELEVATOR MUST BE CONSTRUCTED IN SUCH A MANNER THAT THE PIT IS MORE THAN 500 MM BUILT-IN STEPS ARE NECESSARY. (40X10X400). THE CUSTOMER HAS TO WATERPROOF THE PIT AFTER THE FINISH OF THE EQUIPMENT IN THE PIT BOTTOM. THE PROJECT IS COMPILED IN ACCORDANCE TO THE EXISTING NORMATIVES.

FOR APPROVAL OF EVERYTHING CONCERNING THE MASONRY PARTS OF THE SHAFT.

DATE _____ SIGN _____

<p>Interfloors</p> <p>4/5 = 3059 mm 3/4 = 3151 mm 2/3 = 3185 mm 1/2 = 2980 mm</p>	<p>speed (m/s) 0,5 load capacity (kg) 480 people capacity 6</p>	<p>balanc. mass shock absorbers ETN 125 x 80 cabin shock absorbers GF770 x 15270 mm - stoffe n° 15 balancing mass guides RF50 x 15070 mm</p>	<p>maximum breaking load (N) 42100 minimum breaking load (N) 16400 length (mm) 16400 components of the balanc. mass suspension cables ALLOTTO 9x6 n° 8 panti e n° 199 piastre</p>	<p>reference normatives pr EN81.21 (2006) universide</p> <p>voltage of the battery charger batteries FIAMM-GS FG22703 12V 27Ah</p> <p>reduction gear motor DACU EE302 c.c. 40 V</p> <p>block brake 12 N/m - 24 V</p> <p>arcade 930-480kg-m80x960-H2410</p> <p>arcade mass (kg) 175 balancing (%) 50 balancing mass (kg) 924</p>	<p>Max loads</p> <p>balancing mass P (N) 37247 arcade N (N) 46758 motor equipment T (N) 12454</p> <p>Thrust during normal operation</p> <p>Fx (N) 1358 Fy (N) 523 s (N) 2646 D (N) 2646</p> <p>Thrust of safety gear device intervention</p> <p>Fx (N) 3824 Fy (N) 871 s (N) 15120 D (N) 15120</p>
--	---	--	---	---	--





DELIVERED
BRACKET
15

Shaft typology: METALLIC STRUCTURE AT CLIENT EXPENSE							DISEGNO DEFINITIVO										
Stops:	5	Doors:	5	Sheet	3/3	Sheet dimension	A3	Scale	1/30	first draft		final drawing					
										D. Tomei	25/08/2008	D. Tomei	16/04/2009				
Modifications	d											.	.				
	c											.	.				
	b											.	.				
	a	modificato accessori cabina; armadio da vicino all'ingresso a distante; fossa da 250 a 265.										D. Tomei	16/04/2009				
CUSTOMER							LIFT SHOP							MODEL		SUPERMEC	
