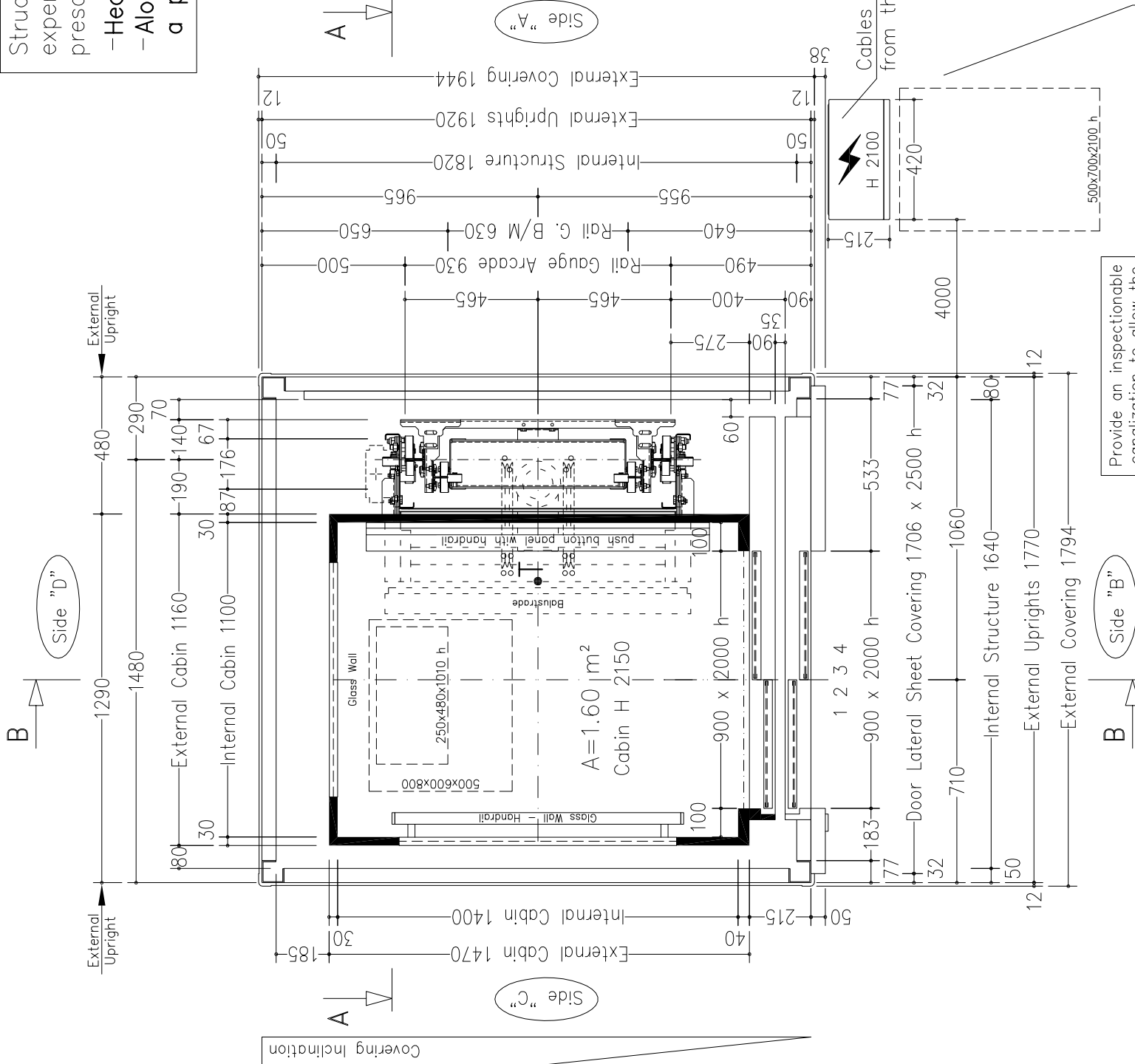


Structure anchorage at customer expense, as per supplier prescribed modes:

- Headroom with min. 3 vertical legs.
- Along travel min 3 vertical legs with a pitch of max 3500 mm

CHARACTERISTICS OF STRUCTURE

- External Structure with Covering inclined as per drawing.
- Structure from pit bottom.
- Structure: Galvanized RAL paint 9017
- Sides "A", "C", "D": Panoramic Fumé glass covering
- Side "B": sheet covering Galvanized RAL paint 9017.
- Floor Covering: sheet Galvanized RAL paint 9017
- Distance Between Axis 1,5 m
- guides length 14055 mm – Guides cut down size 2500 mm



STRUCTURE NOTE
 For the mounting of the structure infilling it needs a distance of min. 30 mm between the structure and the building.

BEAMS AND ACCESSORIES FOR ANCHORAGE NOT INCLUDED (AT CUSTOMER EXPENSE)

STANDARD ACCESSORIES:

- REMOVABLE ENABLING KEY FOR THE CABIN BUTTON PANEL
- REMOVABLE ENABLING KEY FOR THE FLOOR BUTTON PANEL
- DISPLAY ON THE LENDINGS
- CABIN OUTSIDE COVERING ON SIDES "C", "D": POLISHED STAINLESS STEEL

NOT STANDARD ACCESSORIES:

- FULL HEIGHT INFRA-RED CURTAIN
- PUSH BUTTON PANEL HORIZONTAL
- AUTO DIALER EXCLUDED
- CAPACITY PLATE WITH CUSTOMER LOGO
- MECHANICS PAINTED RAL 9005
- DOUBLES BATTERIES

NOTE:
 - LANDING DOORS WITHOUT FRAMES (ONLY LATERAL DOOR OF STRUCTURE)

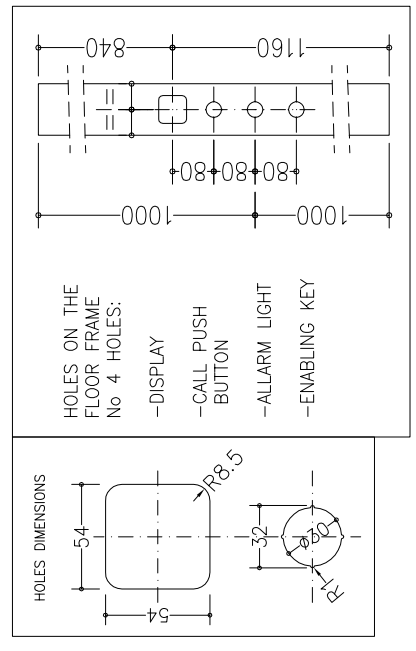
ATLANTIS – SM	cabin
422	cabin mass and operators (kg)
Similinox F12PPS	panels
INOX BA (Lucido)	finishings
Rocksolid 608	floor
Orizzontale a n° 8 fori	push button panel
Faretti INOX BA (Lucido)	roof
INOX Scotch Brite con finestr.	cabin doors colour
INOX Scotch Brite con finestr.	landing doors colour
INOX Scotch Brite	electrical s. cabinet colour

Shaft typology: METALLIC STRUCTURE INCLUDED		FINAL DESIGN DRAWINGS	
Stops: 4	Doors: 4	Sheet dimension: A3	Scale: 1/20
D. Tomei		first draft: 24/01/2011	D. Tomei
D. Tomei		final drawing: 15/02/2011	D. Tomei
D. Tomei		15/02/2011	
D. Tomei		04/02/2011	
D. Tomei		28/01/2011	
MODEL		SUPERMEC	



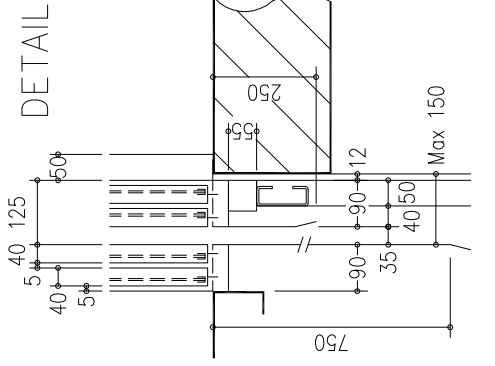
Provide an inspectionable canalization to allow the way to the piping and to the electrical installation.

Handling switchboard at floor 1, protected against water leaks and inside of the building.



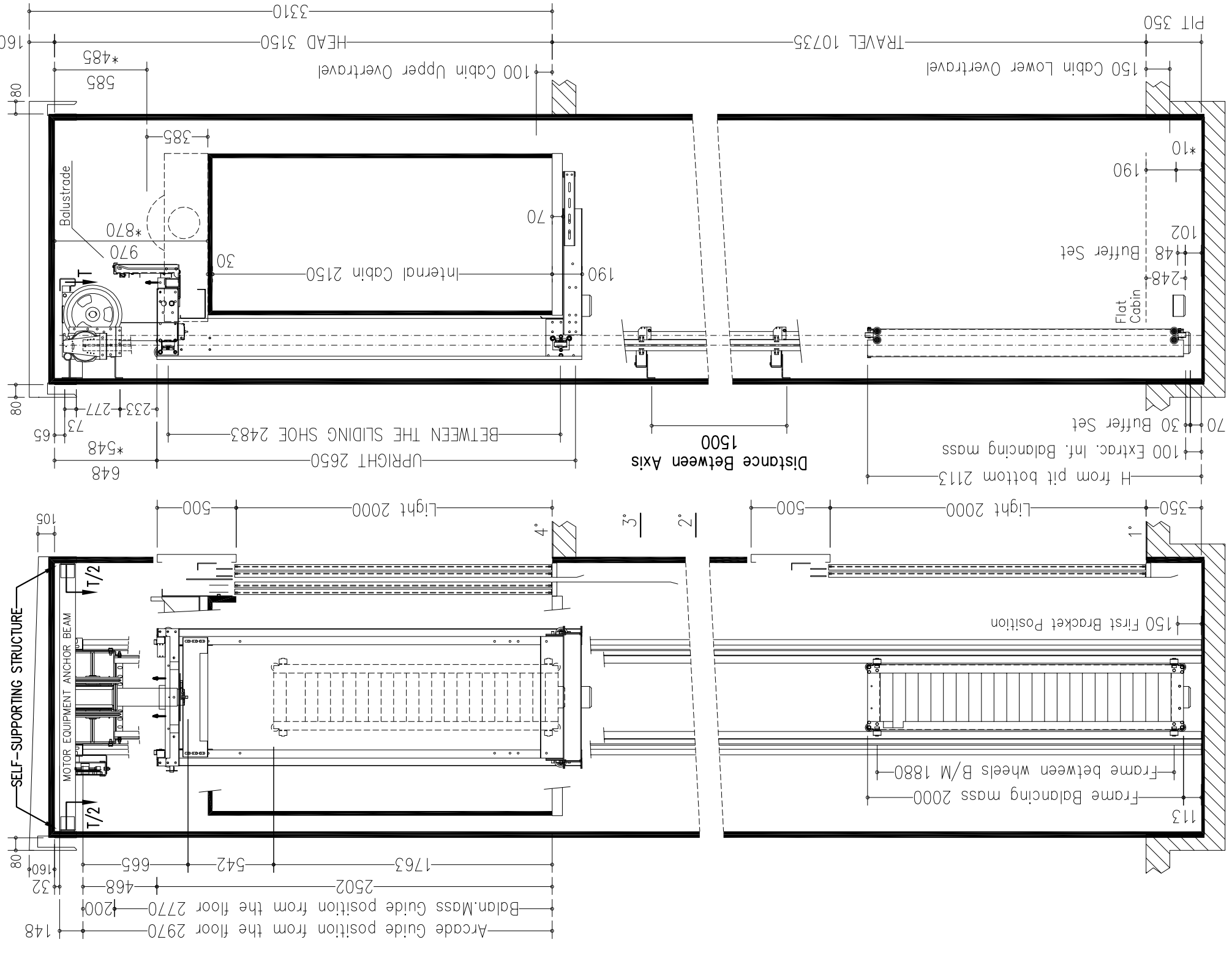
THRESHOLD

DETAIL



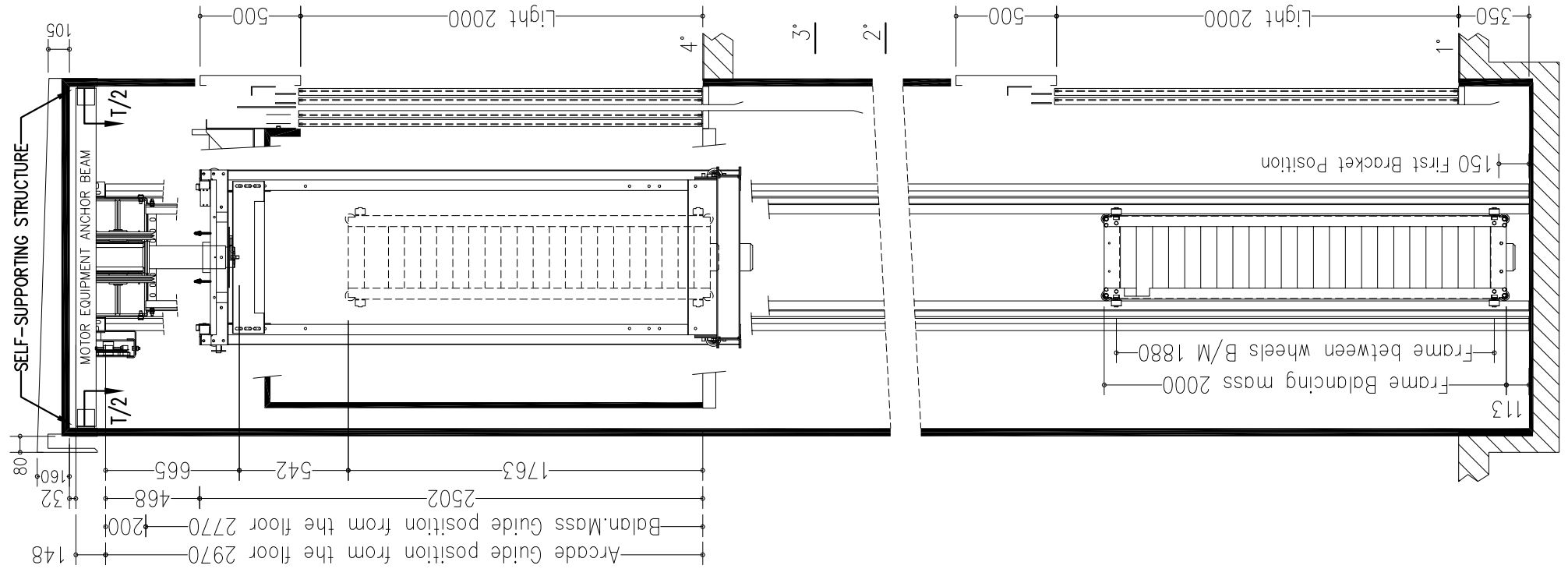
SECTION A-A

VENTILATION ON THE TOP OF THE SHAFT COMPLYING TO THE EXISTING NORMATIVES

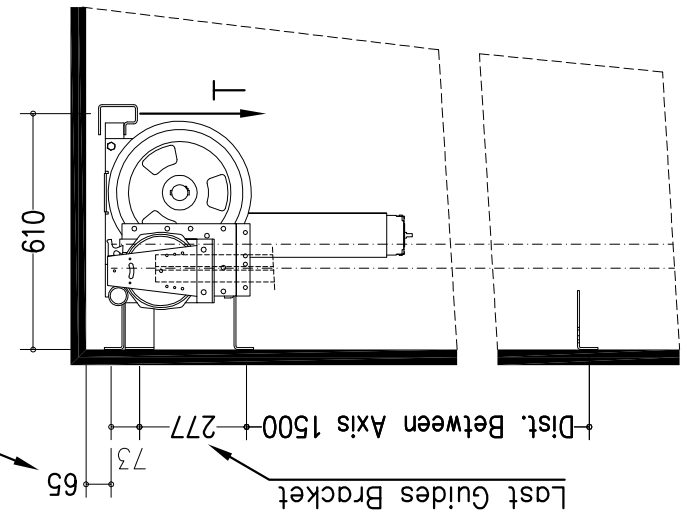


SECTION B-B

VENTILATION ON THE TOP OF THE SHAFT COMPLYING TO THE EXISTING NORMATIVES



motor equipment bracket anchorage



NOTES FOR THE CUSTOMER

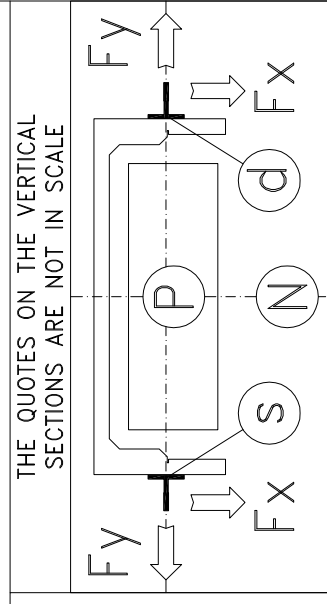
THE HORIZONTAL AND VERTICAL LOAD BEARING STRUCTURES MUST BE ABLE TO SUSTAIN THE LOADS INDICATED. THE HOISTWAY SHAFT MUST BE VENTILATED ACCORDING TO THE EXISTING NORMATIVES AND CONSTRUCTED IN ORDER THAT ALL EQUIPMENTS INSIDE IT ARE PROTECTED FROM DUST, UNHEALTHY VAPOUR AND HUMIDITY. THE DIMENSIONS OF THE LEVATOR SHAFT MUST BE GUARANTEED WITH AN ALLOWANCES OF 1 CM AND THE WALLS MUST BE PERFECTLY PLUMBED. IN THE CASE IN WHICH THE PIT IS MORE THAN 500 MM BUILT-IN STEPS ARE NECESSARY (140X100X400). THE CUSTOMER HAS TO WATERPROOF THE PIT AFTER THE FIXING OF THE EQUIPMENT IN THE PIT BOTTOM. THE PROJECT IS COMPILED IN ACCORDANCE TO THE EXISTING NORMATIVES.

FOR APPROVAL OF EVERYTHING CONCERNING THE MASONRY PARTS OF THE SHAFT.

DATE SIGN

Interfloors

3/4 = 3485 mm
2/3 = 3440 mm
1/2 = 3810 mm



speed (m/s) 0,5
load capacity (Kg) 480
people capacity 6

blancing mass P (N) 35190
arcade N (N) 44646
motor equipment T (N) 11828

Thrust during normal operation
Fx (N) 1076
Fy (N) 836
s (N) 2435
d (N) 2435

Thrust of safety gear device intervention
Fx (N) 3141
Fy (N) 1393
s (N) 14382
d (N) 14382

reference normatives maneuver pr EN81.21 (2006) universale

voltage of the battery charger batteries (V) 220V FIAMM-GS FG22703 12V 27Ah

reduction gear motor 110 PAM 90 1/40 STM
block brake TTN209D 42Vcc 2070W 66A 1100rpm
12 N\m – 24 V

arcade 930-630kg-m120x960-H2690
arcade mass (Kg) 210
balancing (%) 50
balancing mass (Kg) 872
n° 16 panni e n° 141 piastre
suspension cables ALIOTO 9x6
length (mm) 15050
minimum breaking load (N) 42100

balanc. mass shock absorbers ETN 125 x 80
cabin shock absorbers ETN 125 x 80
cabin guides GF770 x 14055 mm – staffe n° 12
balancing mass guides RF50 x 13855 mm

Shaft typology: METALLIC STRUCTURE INCLUDED

Stops: 4 Doors: 4 Sheet 2/2 Scale 1/30 D. Tomei

FINAL DESIGN DRAWINGS

first draft 24/01/2011 D. Tomei
final drawing 15/02/2011 D. Tomei
15/02/2011 D. Tomei
04/02/2011 D. Tomei
28/01/2011 D. Tomei
MODEL SUPERMEC



reinforced-concrete slab on embankment

*QUOTES IN OVERTRAVEL