


- NOT STANDARD:**
- CABIN PREPARED FOR FLOOR COVERING AT CUSTOMER EXPENSE (FLOOR THICKNESS 15 mm)
- STANDARD ACCESSORIES:**
- REMOVABLE ENABLING KEY FOR THE CABIN BUTTON PANEL
 - REMOVABLE ENABLING KEY FOR THE FLOOR BUTTON PANEL
 - WALL MIRROR WITH CENTRE PIECE
 - WALL GLASS WITH CENTRE PIECE
- NOT STANDARD ACCESSORIES:**
- FULL HEIGHT INFRA-RED CURTAIN
 - PUSH BUTTON PANEL HORIZONTAL

ATLANTIS - SM	442
cabin mass and operators (kg)	
INOX BA (Lucido)	
INOX BA (Lucido)	
ESCLUSO DALLA FORNITURA	
Orizzontale a n° 7 fori + GONG	
Disegno Labirint INOX BA (Lucido)	
INOX BA (Lucido) con vetro (oper. GMM)	
INOX BA (Lucido) con finestr. panoramico trasparente	
INOX BA (Lucido)	
Similinox FT2PPS	

Shaft typology: REINFORCED CONCRETE			
Stops:	4	Doors:	4
		Sheet	1/2
		Sheet dimension	A3
		Scale	1/15
		first draft	D. Tonel
			28/02/2008
		final drawing	D. Tonel
			10/03/2008
		MODEL	SUPERMEC



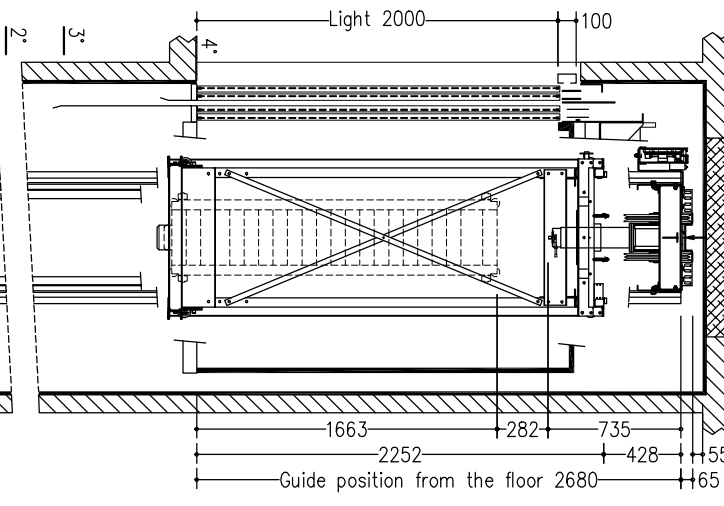
EP
Elevatori Pemanolati

Provide an inspectionable canalization to allow the way to the piping and to the electrical installation.

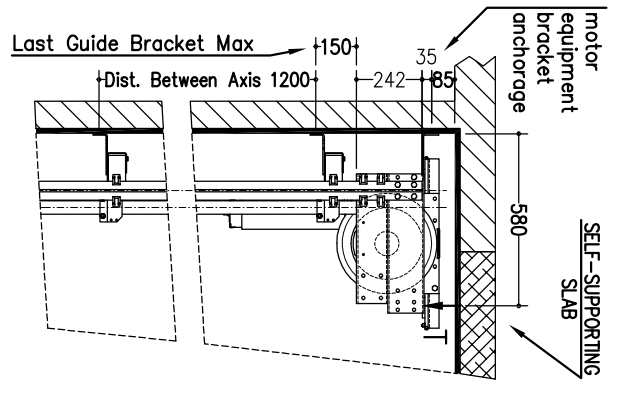
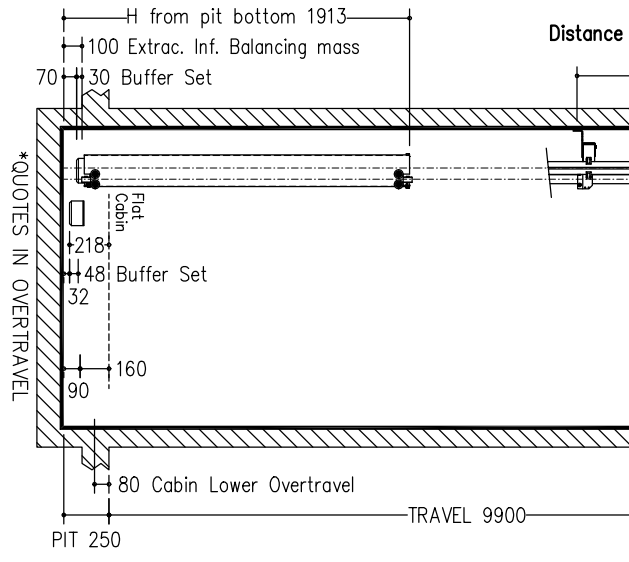
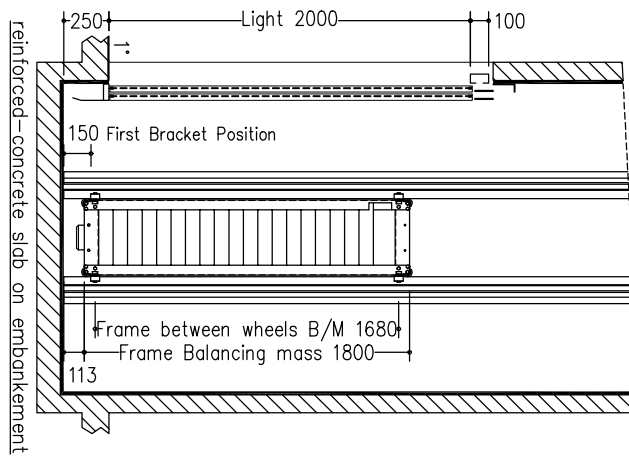
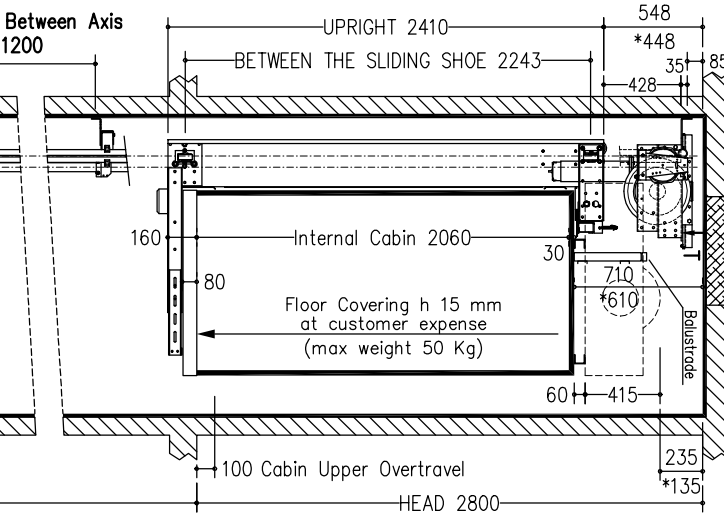
Handling switchboard at floor 1, protected against water leaks.

T
NOTE EQUIPMENT
FILLING MASSIVE

SECTION B-B VENTILATION ON THE TOP OF THE SHAFT COMPLYING TO THE EXISTING NORMATIVES

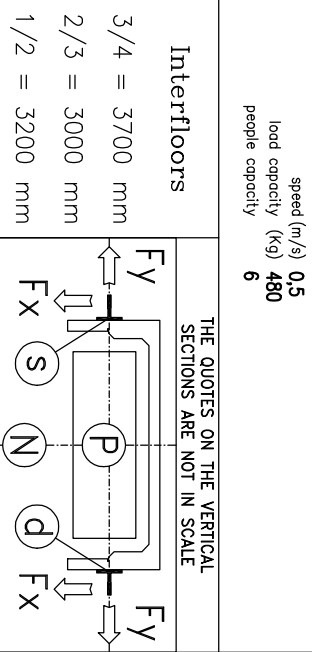


SECTION A-A



Max loads	blancing mass P (N) 34374 arcode N (N) 43640 motor equipment T (N) 11614
Thrust during normal operation	Fx (N) 1237 Fy (N) -925 s (N) 2223 D (N) 2223
Thrust of safety gear device intervention	Fx (N) 3525 Fy (N) -1542 s (N) 13968 D (N) 13968
reference normatives	pr EN81.21(2006) universide
voltage of the battery charger	(V) 220V
batteries	FIAMM-GS FG22703 12V 27Ah
reduction gear	110 PAM 90 1/40 STM
motor	DAQU EE302 c.c. 40 V
block brake	12 N/m - 24 V
arcode	930-480kg-m80x960-H2410
arcode mass (kg)	175
balancing (%)	50
balancing mass (kg)	856
components of the bolanc, mass suspension cables	n° 10 panti e n° 170 piastre ALOTO 9x6
length (mm)	14000
minimum breaking load (N)	42100
bolanc, mass shock absorbers	ETN 125 x 80
cabin shock absorbers	ETN 125 x 80
cabin guides	GF770 x 12830 mm - stoffe n° 12
balancing mass guides	RF50 x 12830 mm
speed (m/s)	0,5
load capacity (kg)	480
people capacity	6

NOTES FOR THE CUSTOMER
THE HORIZONTAL AND VERTICAL LOAD BEARING STRUCTURES MUST BE ABLE TO SUSTAIN THE LOADS INDICATED. THE HOISTWAY SHAFT MUST BE VENTILATED ACCORDING TO THE EXISTING NORMATIVES AND CONSTRUCTED IN ORDER THAT ALL EQUIPMENTS INSIDE IT ARE PROTECTED FROM DUST, UNWEATHER VIBRATIONS AND HUMIDITY. THE DIMENSIONS OF THE ELEVATOR SHAFT MUST BE COMPATIBLE WITH AN OVERTRAVEL OF 80 mm. THE DIMENSIONS OF THE PIT MUST BE COMPATIBLE WITH THE CASE IN WHICH THE PIT IS MORE THAN 500 mm BUILT-IN STEPS ARE NECESSARY (400X400). THE CUSTOMER HAS TO WATERPROOF THE PIT AFTER THE FINING OF THE EQUIPMENT IN THE PIT BOTTOM. THE PROJECT IS COMPILED IN ACCORDANCE TO THE EXISTING NORMATIVES.
FOR APPROVAL OF EVERYTHING CONCERNING THE MASONRY PARTS OF THE SHAFT.
DATE SIGN



Shaft typology: REINFORCED CONCRETE		Sheet	2/2	Scale	1/30	first draft	D. Tonnel	final drawing	D. Tonnel
Stops:	4	Doors:	4	D. Tonnel	28/02/2008	10/03/2008	DISEGNO DEFINITIVO		
Modifications	d c d d	pulsantiera era verticale, anche parete a specchio con rampitratto; velocità era 0,30 m/s; corso era 9600.							
EP Elevatori Pemanotti		D. Tonnel MODEL SUPERMEC							