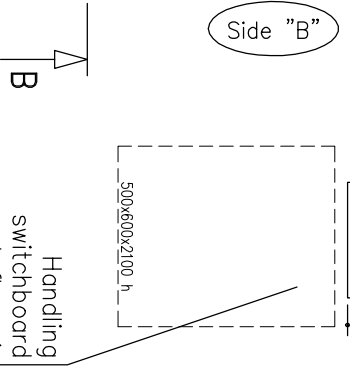
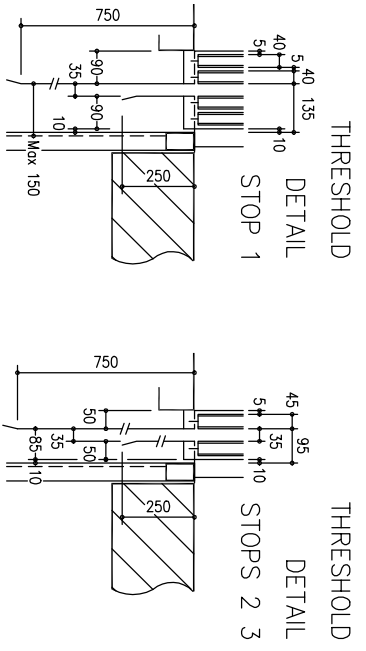
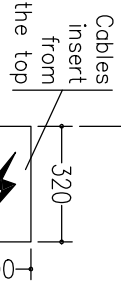


Provide an inspectionable canalization to allow the way to the piping and to the electrical installation.

- Metallic structure for indoor from pit bottom with flat covering.
- Structure and sheet covering: RAL 9016
- Structure covering at customer expense. Glass frame included.
- Anchorage at customer expense.



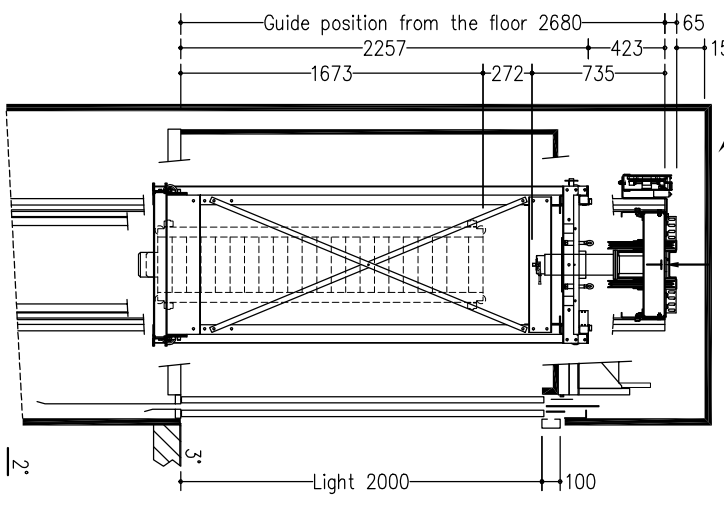
- STANDARD ACCESSORIES:**
- REMOVABLE ENABLING KEY FOR THE CABIN BUTTON PANEL
 - REMOVABLE ENABLING KEY FOR THE FLOOR BUTTON PANEL
 - CABIN PREPARED FOR FLOOR COVERING AT CUSTOMER EXPENSE (FLOOR THICKNESS 10 mm)
 - PUSH BUTTON PANEL VERTICAL
 - SHAFT LIGHTING
- NOT STANDARD ACCESSORIES:**
- FULL HEIGHT INFRA-RED CURTAIN

cabin mass and operators panels	ATLANTIS	410	BRUSHED STAINLESS STEEL
finishings	GALVANIZED		Raw (floor covering at customer expense)
floor			Standard vertical with no 6 holes + GONG
push button panel			4 Downlights (BRUSH. STAINLESS STEEL)
roof			BRUSHED STAINLESS STEEL (oper. CMM)
cabin doors colour			BRUSHED STAINLESS STEEL
landing doors colour			BRUSHED STAINLESS STEEL
frame landing doors colour			BRUSHED STAINLESS STEEL
electrical s. cabinet colour			BRUSHED STAINLESS STEEL

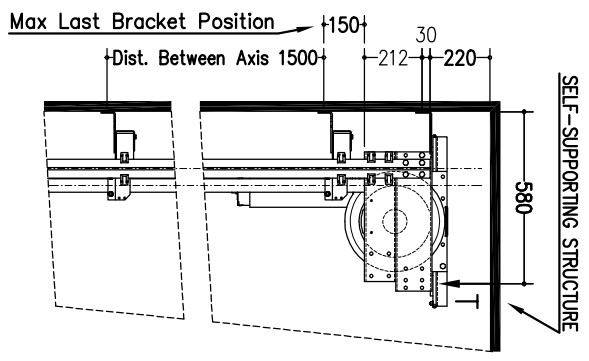
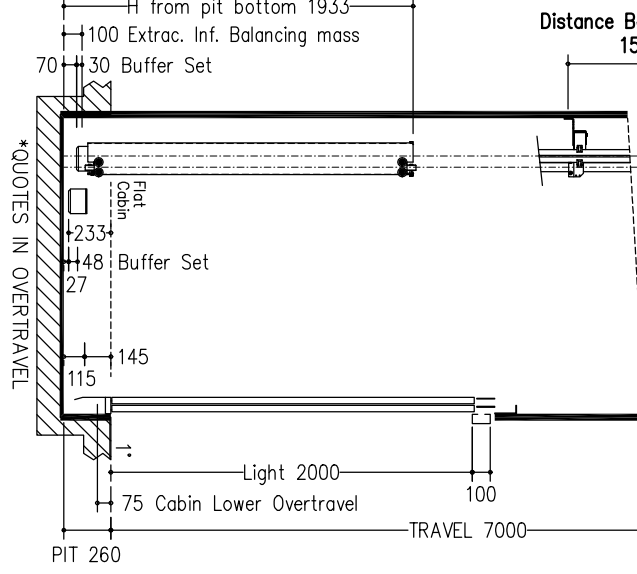
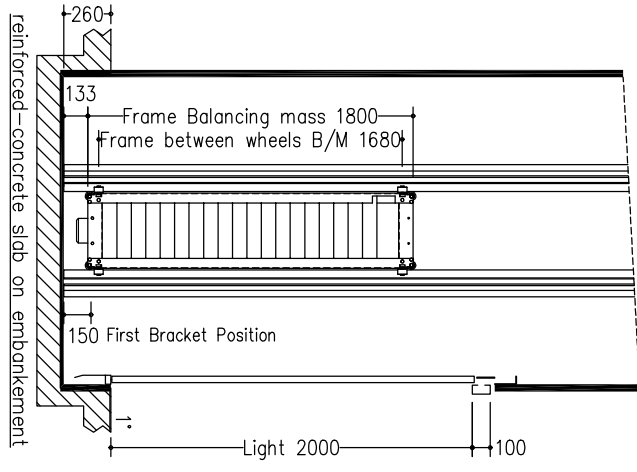
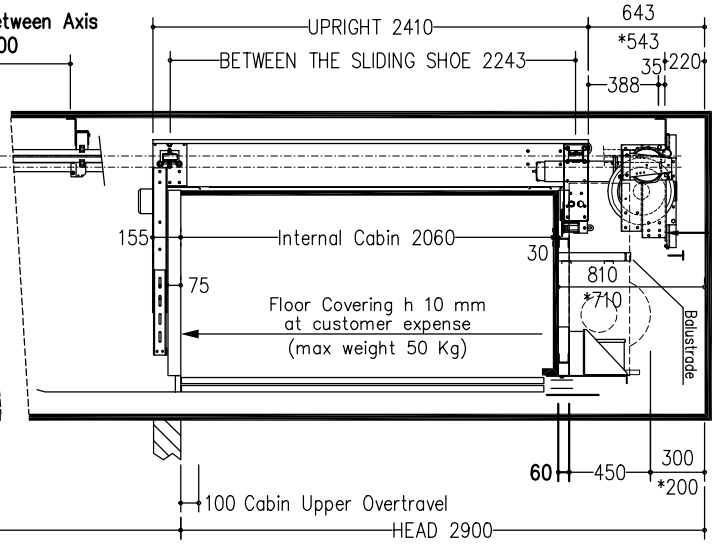
Shaft typology: METALLIC STRUCTURE INCLUDED				DISEGNO PRELIMINARE	
Stops:	3	Doors:	4	Sheet:	1/2
				Sheet dimension:	A3
				Scale:	1/15
				Drawing by:	Daniilo Tomei
				first draft:	19/02/2007
				final drawing:	
Modifications				MODEL	
d					
c					
b					
a					
ognuno 1 servizio di piano i; ante vano panoramico; pliantiera ero orizzonti; cabina ero Univesef; rivest. pareti e piano cab. a cura cliente.				DANIILLO TOMEI	
				08/03/2007	
				SUPERMEC	
EP				Elevatori Pemanolati	

T
NOTE EQUIPMENT
FILLING KNOWLEDGE

SECTION B-B
VENTILATION ON THE TOP OF THE SHAFT COMPLYING TO THE EXISTING NORMATIVES



SECTION A-A
VENTILATION ON THE TOP OF THE SHAFT COMPLYING TO THE EXISTING NORMATIVES



SELF-SUPPORTING STRUCTURE

Max loads			
balancing mass P	(N)	30851	
arcade N	(N)	42221	
motor equipment T	(N)	10843	
Thrust during normal operation			
Fx	(N)	1480	
Fy	(N)	428	
s	(N)	1723	
D	(N)	1723	
Thrust of safety gear device intervention			
Fx	(N)	3877	
Fy	(N)	713	
s	(N)	13062	
D	(N)	13062	
reference normatives			
maneuver		pr EN81,21	
universal		universal	
voltage of the battery charger	(V)	220V	
batteries		FIAMM-GS FG22703 12V 27Ah	
reduction gear		110 PAM 90 1/49 STM	
motor		DAQU EE302 c.c. 40 V	
block brake		12 N.m - 24 V	
arcade		730-480kg-m80x1160-H2410	
arcade mass (kg)		165	
balancing (%)		40	
balancing mass (kg)		766	
components of the bolanc. mass		no. 2 Ingot and no. 281 plates	
suspension cables		ALLOTTO 09x6	
length (mm)		11100	
minimum breaking load (N)		42100	
bolanc. mass shock absorbers		ETN 125x100	
cabin shock absorbers		ETN 125x100	
cabin guides		RF70-9 x 9940 mm - brackets no. 8	
balancing mass guides		RF50 x 9940 mm	

NOTES FOR THE CUSTOMER

THE HORIZONTAL AND VERTICAL LOAD BEARING STRUCTURES MUST BE ABLE TO SUSTAIN THE LOADS INDICATED. THE HOSTING SHAFT MUST BE VENTILATED ACCORDING TO THE EXISTING NORMATIVES AND CONSTRUCTED IN ORDER THAT ALL EQUIPMENTS INSIDE IT ARE PROTECTED FROM DUST, UNHEALTHY VAPORS AND HUMIDITY. THE DIMENSIONS OF THE ELEVATOR SHAFT MUST BE COMPATIBLE WITH AN EXISTING SHAFT. THE CUSTOMER MUST BE RESPONSIBLE FOR THE CASES IN WHICH THE PIT IS MORE THAN 500 MM BUILT-IN STEPS ARE NECESSARY (HORIZONTAL). THE CUSTOMER HAS TO WATERPROOF THE PIT AFTER THE DRING OF THE EQUIPMENT IN THE PIT BOTTOM. THE PROJECT IS COMPILED IN ACCORDANCE TO THE EXISTING NORMATIVES.

FOR APPROVAL OF EVERYTHING CONCERNING THE MASONRY PARTS OF THE SHAFT.

DATE SIGN

Shaft typology: **METALLIC STRUCTURE INCLUDED**

Stops: 3 Doors: 4 Sheet: 2/2

Modifications	Scale	Drawing by
d	1/30	Daniilo Tomei
d	A3	
c		
b		
d		

ognuno 1 servizio di piano i; ante erano panoramiche, pulsante era orizzonti; cabina era Universel; rivest. pareti e piano cab. a cura cliente.

DISEGNO PRELIMINARE
 first draft: 19/02/2007
 final drawing: 08/03/2007

SUPERMEC

