

## Home elevators

An elevator is a practical inclusion in multi-level homes and houses on steep sites. It's also a great idea for the elderly, those with disabilities and regular travellers who require easy transportation of luggage. A home elevator allows everyone to move around their home, free from the struggle or constraint of staircases and ramps.

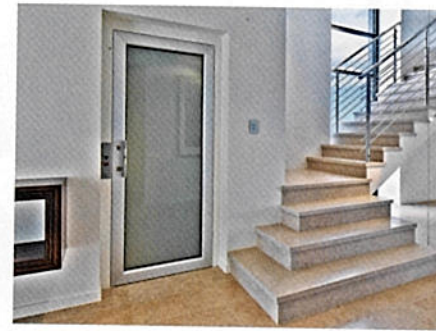
An elevator can certainly be a feature or a focal point; however, there are many models available that can be integrated into the design of the house to be unobtrusive, appealing to those

seeking a more concealed look. One such model, the FreedomLift by Liftshop, is a classy design and is designed for flexibility and affordability. It is a standard design, making it an easy option that doesn't have any confusing add-ons. Its design also makes it easy to set up, so there's minimal impact on your home during installation.

The EasyGlide Platform Lift from Grant Elevators carries up to five people in quiet comfort. It is a cost-effective solution with reduced shaft dimensions, minimal pit depth and modest headroom, saving space and minimising construction and installation costs. **R**

## Shopping details

[www.atticladders.com.au](http://www.atticladders.com.au)  
[www.spiralcellars.com.au](http://www.spiralcellars.com.au)  
[www.lenwallisaudio.com](http://www.lenwallisaudio.com)  
[www.grantelevators.com.au](http://www.grantelevators.com.au)  
[www.liftshop.com.au](http://www.liftshop.com.au)  
[www.medallionhomes.com.au](http://www.medallionhomes.com.au)



### Left and right

The EasyGlide Platform Lift from Grant Elevators is an easy, cost-effective solution.

### Below

The Freedom Lift by Liftshop provides an opportunity for seamless integration with your home's interior.

