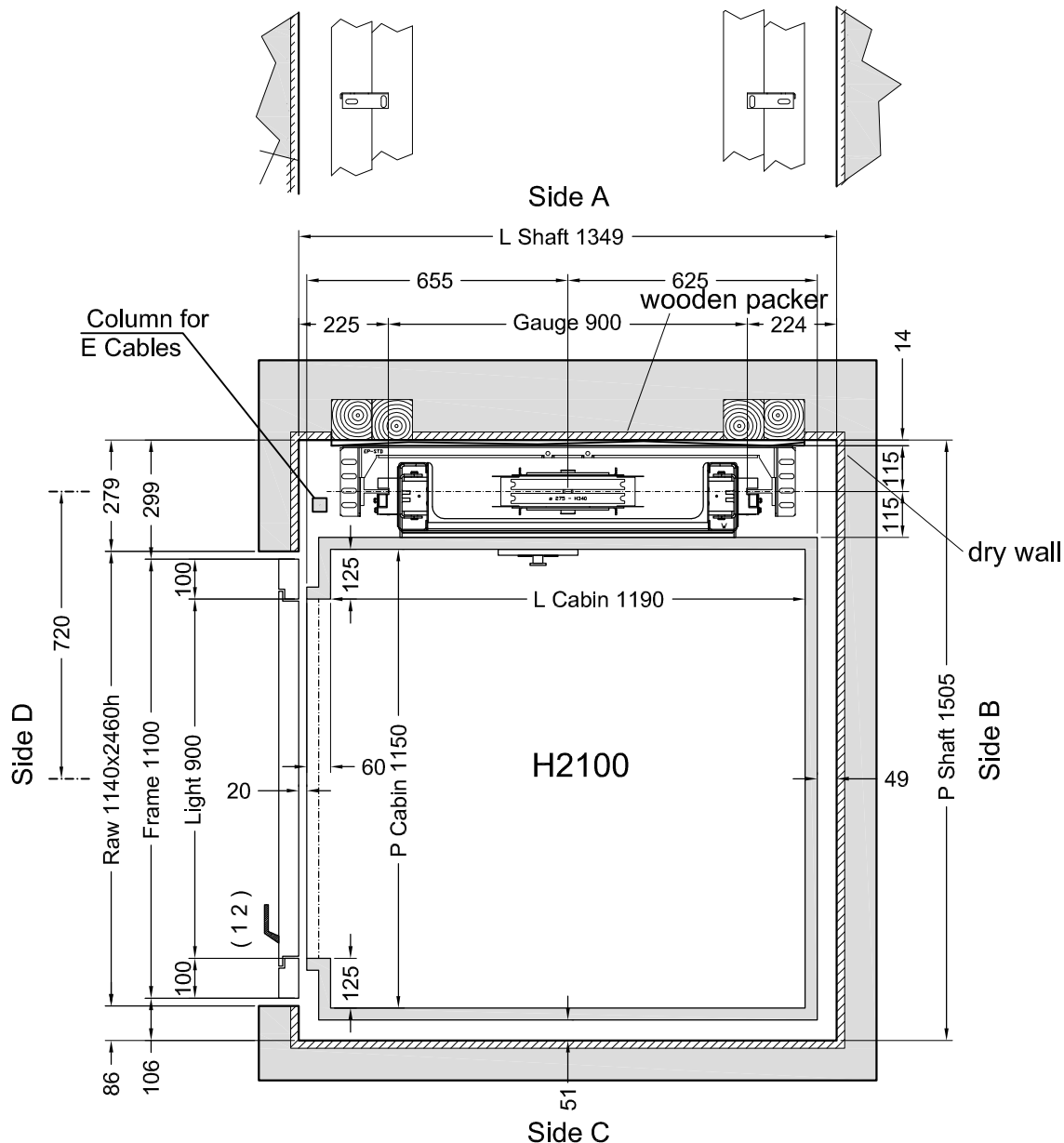


FLOOR DOOR

Side B	Side C	Side D	VERSION	H LIGHT	H FRAME	FRAME	WINDOW	GLASS	ACCESSORIES
		1	Standard RAL 7001 *	2000	2440	RAL 7001 smoth	Absent		C2
		2	Standard RAL 7001 *	2000	2440	RAL 7001 smoth	Absent		

C1 = Enabling key for the floor button pad (single insertion) C2 = Enabling key for the floor button pad (double insertion) PM = Button pad on the wall PE = Outside lock and button pad
 * smoth - doors flat - no raised edges



Customer own flooring: Dimensions **48 1/16"**(L) x **45 1/4"**(P) thks **20 mm** Weight: **53 lbs**

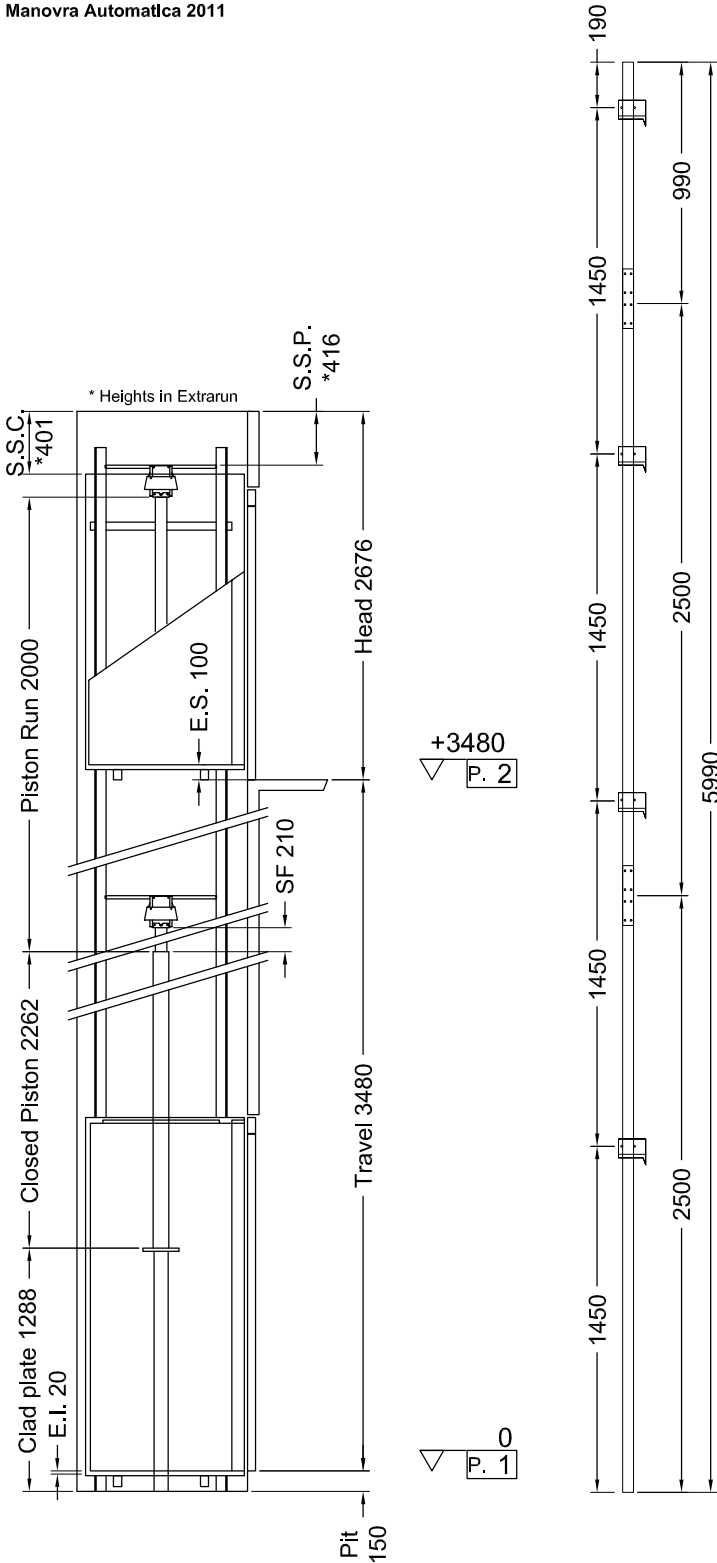
Feasibility n° 2113

Stops: 2 - Doors: 2
 Shaft in **Timber**

	VERSIONS	Description	Designer	Date	Final Drawings	
		corsa a 137"	D.Ogliastro	12/12/2014	Model ELFO	SHEET 1/2
		Doors Flat - no raised edges	D.Ogliastro	30/10/2014		
		Centralina a 144"	D.Ogliastro	28/10/2014	 SCALE 1:12.5	SHEET DIMENS. A3
		Vano in Timber	D.Ogliastro	26/09/2014		
	CLIENT		Final Drawings D.Ogliastro	12/12/14		
			CAPACITY 771 lbs	AREA R ² 14,7		

ACCESSORI:

- Chiave abilitazione pulsantiera cabina a doppia estrazione
- Guide in barre da 2,5 m
- Pompa a mano
- Pressostato con segnalazione di sovraccarico
- Due velocità
- Interruttore blocco porta quadro
- Pulsanti a luce blu
- Maniglie CASPIM
- Predisposizione per Telefono
- Fotocellula tutta parete V2
- Manovra Automatica 2011



Indirect Installation	Speed 59 fpm	04/07/14 08.16 (V.2845)
-----------------------	--------------	-------------------------

THRUST DURING NORMAL OPERATION			THRUST OF SAFETY DEVICE INTERVENT.		
P	(lbf)	2531	P	(lbf)	123
N	(lbf)	125	N	(lbf)	1689
F1	(lbf)	356	F1	(lbf)	593
F2	(lbf)	70	F2	(lbf)	116

SPACES		PRESSURES		
E.I.	Extrarun below cabin	20	Max static pressure (bar)	37,76
E.S.	Extrarun above cabin	100	Min static pressure (bar)	19,92
SF.	Piston extraction	210	Overpressure limit (bar)	52,86
S.S.P.	Piston/head	416	Residual pressure (bar)	1,43
S.S.C.	Cabin/head	401		

HYDRAULIC UNIT		MECHANICAL PARTS	
Central unit	GMV HL 3010 (-*)	Runners	T70-2A
Capacity (l/min)	35	Brackets	(Nr) 4
Motor (V)	MF230V - 60 Hz	Cables	Ø 9 mm 6-(1+9+9)
Power (Kw)	2,9	Cables length (mm) 2 x	9000
Nominal current (A)	19	Min actual breaking load (N)	47300
Piston	START Homø 70x5x2000		
Opt. oil position	BASSO		
Tubing	3/4" EN 853 1SN - FD 3/4" - GOMITO 3/4"		
Tubing length	314 15/16"		
Min hydraulic oil (L)	41		

SECURITY DEVICES	Manufacturer	Model	Certificate
Safety Gear	PFB	BP1	TÜV AFV515
Block Valve	START ELEVATOR	1/2" 0327	CA50.00525
Key Locks	Prudhomme	PLT/L/CPX NL 11-400-1002-125-02	

MACHINERY LOCATION			
At floor	1	Length of the hose travel	144"
Cables enter in shaft: Side	A	Hydraulic unit model	-*

CABIN	CABIN ACCESSORIES
Panels	Similinox F12PPS
Finishes	Inox Scotch Brite
Oper. panel	VERTICAL
Floor	By Customer
Ceiling	SPOTS LED - Blanco A1

- OTHER ACCESSORIES**
- Enabling key for the cabin button pad, double insertion
 - Guides dimension 98" 7/16
 - Manual pump
 - Manostat with overweight signal
 - Two speed
 - Cabinet General switcher to enabling controller
 - Blue Light Buttons
 - Handles CASPIM
 - Prepared for Telephone
 - Full height Infra-red curtain V2
 - Automatic Control 2011



Final Drawings	D.Ogliastro	12/12/14
Final Drawings		
SCALE	OUT OF SCALE	SHEET 2/2