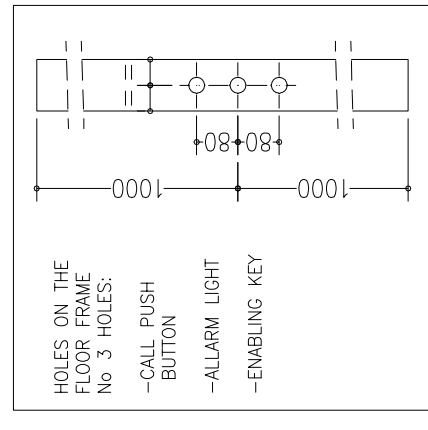


NOTE:
 -ELECTRIC PANEL WITH MICROCONTROLLER CARD AND MULTIVISION DISPLAY

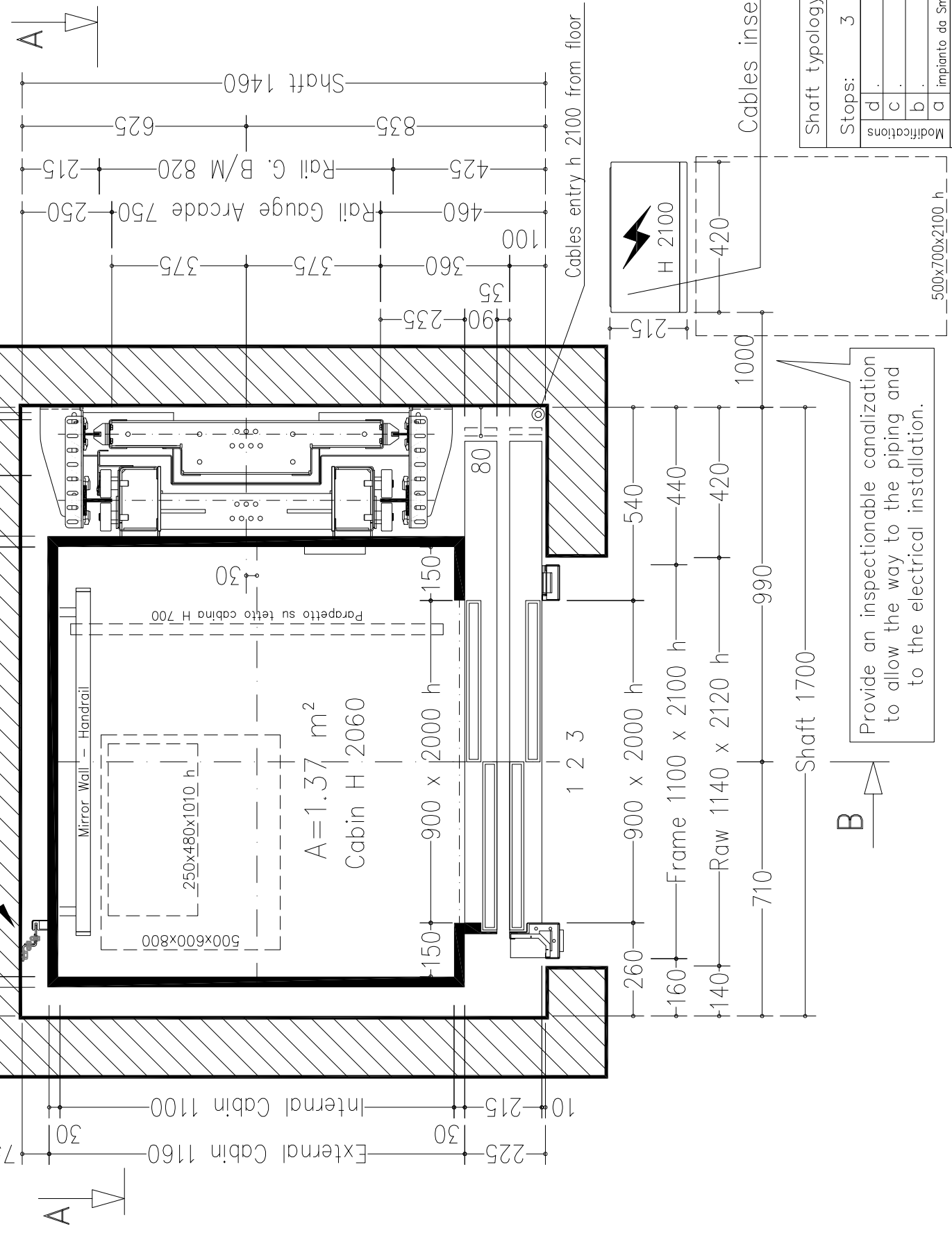
NOT STANDARD:
 -CABIN PREPARED FOR FLOOR COVERING AT CUSTOMER EXPENSE (FLOOR THICKNESS 15 mm - MAX WEIGHT 25 Kg)

STANDARD ACCESSORIES:
 -REMOVABLE ENABLING KEY FOR THE CABIN BUTTON PANEL
 -REMOVABLE ENABLING KEY FOR THE FLOOR BUTTON PANEL
 -BRUSHED STAINLESS STEEL CABIN HANDRAIL
 -PUSH BUTTON PANEL VERTICAL
 -SUPPLEMENTARY ALUMINIUM GUIDE NOT PAINTED

NOT STANDARD ACCESSORIES:
 -FULL HEIGHT INFRA-RED CURTAIN
 -AUTO DIALER EXCLUDED
 -DOUBLES BATTERIES



cabin mass and operators (Kg)	341
panels	Lamiera zincata
finishings	INOX Scotch Brite
floor	ESCLUSO DALLA FORNITURA
push button panel	Verticale a n° 6 fori
roof	Disegno Labirint INOX Scotch Brite - NEON 230V
cabin doors colour	INOX Scotch Brite (oper. Prisma "Micro Std")
landing doors colour	INOX Scotch Brite
frame landing doors colour	INOX Scotch Brite
electrical s. cabinet colour	Bianco A1



Cables insert from the top

Shaft typology:	MASONRY
Stops:	3
Doors:	3
Sheet	1/2
Scale	1/15
Sheet dimension	A3
D. Tomei	02/11/2011
first draft	02/11/2011
D. Tomei	30/08/2013
final drawing	30/08/2013
FINAL DESIGN DRAWINGS	
Rif.	86082
ORDER NUMBER	SM1533
CUSTOMIFP	
ENERGY	

Handing switchboard at floor 1, protected against water leaks and inside of the building.



Provide an inspectionable canalization to allow the way to the piping and to the electrical installation.

SM1533 EN001.31

blancing mass P (N) 25522
cabin N (N) 38895

Thrust during normal operation
Fx (N) 1645
Fy (N) 782
s (N) 5883
d (N) 5883

Thrust of safety gear device intervention
Fx (N) 2741
Fy (N) 3313
s (N) 1349
d (N) 20797

reference directive 95/16/CE
maneuver universale
voltage of the battery charger (V) 230V
batteries 12V 27Ah

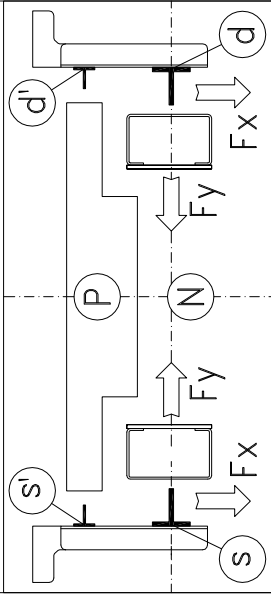
reduction gear STM PLM65 1/21,1
motor TTN209D 42Vcc 2070W 66A
block brake 23 N/m - 24V

arcade 750-m120x1100-H2385
safety gear LVT2000 DX P+Q=1848-2147 KG n. 1
arcade mass (Kg) 155
balancing (%) 38
balancing mass (Kg) 634
components of the balanc. mass
lamiere sp. 5 mm n° 210
suspension cables WOLF n° 6x6,5
length (mm) 10000
minimum breaking load (N) 31500


balanc. mass shock absorbers ETN 125 x 80
cabin shock absorbers ETN 125 x 80
cabin guides T80x80x9 x 9110 mm - staffe n° 7
balancing mass guides T45/A x 9110 mm

max speed (m/s) 0,5
load capacity (Kg) 480
people capacity 6

Interfloors
2/3 = 3400 mm
1/2 = 3040 mm

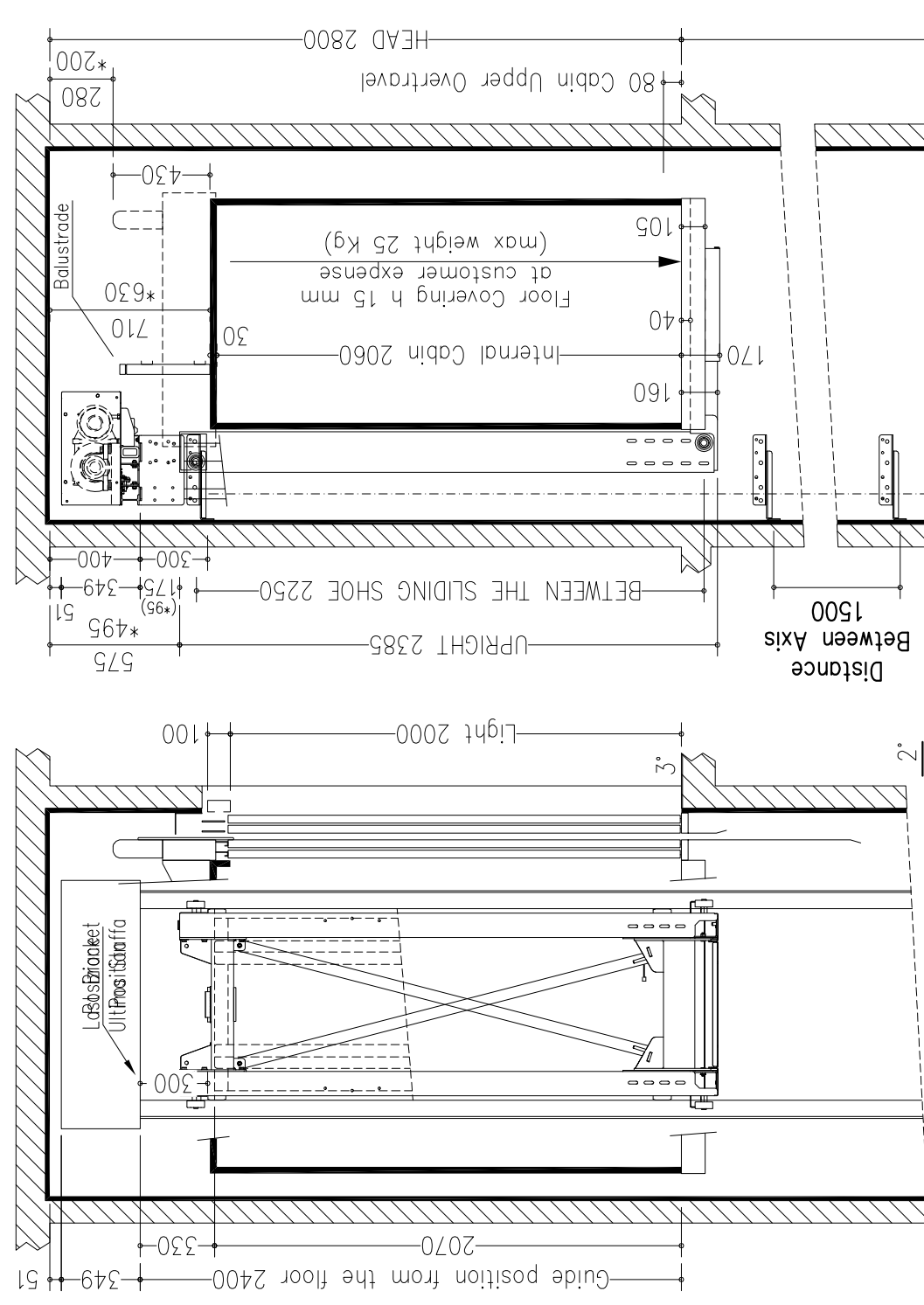


FINAL DESIGN DRAWINGS	
final drawing	30/08/2013
first draft	02/11/2011
D. Tomei	D. Tomei
Scale 1/30	
Sheet dimension A3	
Sheet 2/2	
Doors: 3	
Stops: 3	
Shaft typology: MASONRY	

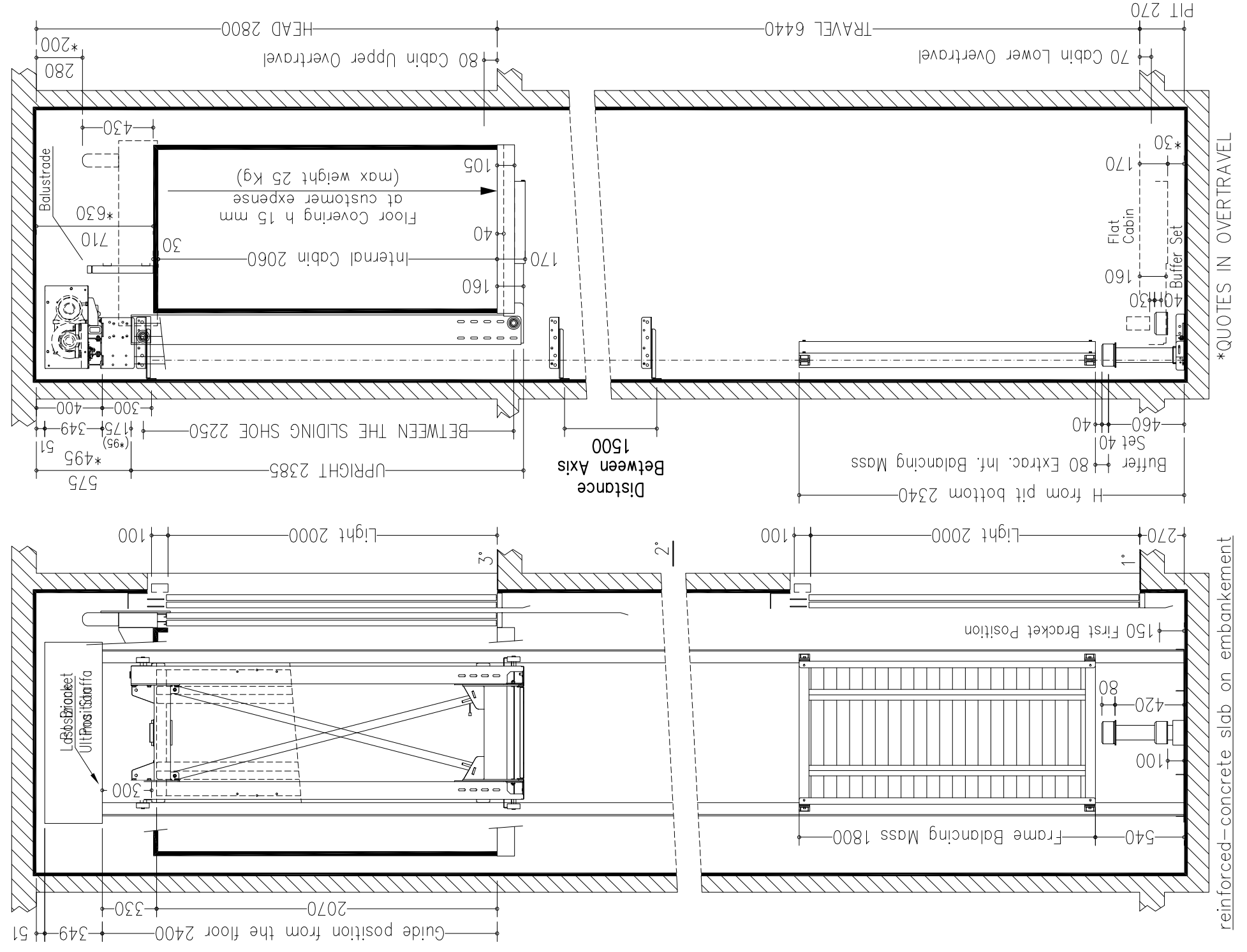
Modifications	d.	
	c.	
	b.	
Rif.	impianto da Smec ad Energy e speccchiato; specchio da metà a tutta parete; pannelli cab. e Q.E. erano Similinox; corsa era 6000.	
ORDER NUMBER	86082	
	SM1533	
		
ENERGY		

NOTES FOR THE CUSTOMER
THE HORIZONTAL AND VERTICAL LOAD BEARING STRUCTURES MUST BE ABLE TO SUSTAIN THE LOADS INDICATED. THE HOISTWAY SHAFT MUST BE VENTILATED ACCORDING TO THE EXISTING NORMATIVES AND CONSTRUCTED IN ORDER THAT ALL EQUIPMENTS INSIDE IT ARE PROTECTED FROM DUST, UNHEALTHY VAPOUR AND HUMIDITY. THE DIMENSIONS OF THE LEVATOR SHAFT MUST BE GUARANTEED WITH AN ALLOWANCES OF 1 CM AND THE WALLS MUST BE PERFECTLY PLUMBED. IN THE CASE IN WHICH THE PIT IS MORE THAN 500 MM BUILT-IN STEPS ARE NECESSARY (140X100X400). THE CUSTOMER HAS TO WATERPROOF THE PIT AFTER THE FIXING OF THE EQUIPMENT IN THE PIT BOTTOM. THE PROJECT IS COMPILED IN ACCORDANCE TO THE EXISTING NORMATIVES.
FOR APPROVAL OF EVERYTHING CONCERNING THE MASONRY PARTS OF THE SHAFT.
DATE _____ SIGN _____

SECTION A-A
VENTILATION ON THE TOP OF THE SHAFT COMPLYING TO THE EXISTING NORMATIVES



SECTION B-B
VENTILATION ON THE TOP OF THE SHAFT COMPLYING TO THE EXISTING NORMATIVES



reinforced-concrete slab on embankment

*QUOTES IN OVERTRAVEL