

**STANDARD ACCESSORIES:**

- REMOVABLE ENABLING KEY FOR THE CABIN BUTTON PANEL
- REMOVABLE ENABLING KEY FOR THE FLOOR BUTTON PANEL
- PUSH BUTTON PANEL VERTICAL
- INOX BA MECC. CABIN HANDRAIL

**NOT STANDARD ACCESSORIES:**

- FULL HEIGHT INFRA-RED CURTAIN
- AUTO DIALER EXCLUDED
- BLUE BUTTONS
- CABIN PREPARED FOR FLOOR COVERING AT CUSTOMER EXPENSE (FLOOR THICKNESS 20 mm - MAX WEIGHT 50 Kg)

(1) Standard Warm White LED

CLASSICA	cabin mass and operators	(Kg)	409
Similinox F12PPS	panels		
INOX BA mecc.	finishings		
ESCLUSO DALLA FORNITURA	floor		
Verticale a n° 5 fori - INOX BA mecc.	push button panel		
Faretti LED <sup>(1)</sup> Similinox F12PPS - 24V	roof		
INOX BA mecc. (oper. Fermator)	cabin doors colour		
INOX BA mecc.	landing doors colour		
INOX BA mecc.	frame landing doors colour		
INOX BA mecc.	electrical s. cabinet colour		

Shaft typology: MASONRY		Scale		DISEGNO DEFINITIVO	
Stops: 2	Doors: 2	Sheet 1/2	1/15	first draft 31/10/2016	final drawing 15/11/2016
Modifications		D. Tomei			
d.					
c.					
b.					
a.	distanza quadro manovra da 7000 a 9000.				
AN		D. Tomei			
AN		MODEL			
AN		ENERGY			
AN		P			

Provide an inspectionable canalization to allow the way to the piping and to the electrical installation.

Handling switchboard at floor G protected against water leaks and inside of the building.

EN759 EN201.15

blancing mass P (N) 33400  
cabin N (N) 43194

Thrust during normal operation  
Fx (N) 1643  
Fy (N) -830  
s (N) 6591 s' (N) 5952  
d (N) 6591 d' (N) 5952

Thrust of safety gear device intervention  
Fx (N) 2738  
Fy (N) 2998  
s (N) 1241 s' (N) 602  
d (N) 22838 d' (N) 602

reference directive 95/16/CE  
maneuver universale  
voltage of the battery charger (V) 230V  
batteries 12V 27Ah

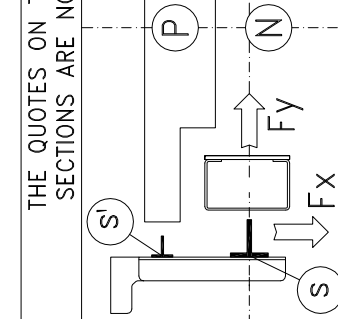
reduction gear STM PLM65  
motor TTN209D 42Vcc 2070W 66A  
block brake 23 N/m - 24V

arcade 950-H2335  
safety gear Dyn. PR2500UDV35 P+Q=962-1118 Kg n.2  
arcade mass (Kg) 201  
balancing (%) 47  
balancing mass (Kg) 800

components of the balanc. mass  
lamiere sp. 5 mm n° 119  
pani n° 9x350 + n° 3x250 + n° 3x200  
WOLF n° 6x6,5 - [mm] 7000

suspension cables minimum breaking load (N) 31500  
balanc. mass shock absorbers ETN 125 x 80  
cabin shock absorbers ETN 125 x 80  
cabin guides T90/A x 6380 mm - staffe n° 6  
balancing mass guides T45/A x 6380 mm

max speed (m/s) 0,5  
load capacity (Kg) 480  
people capacity 6



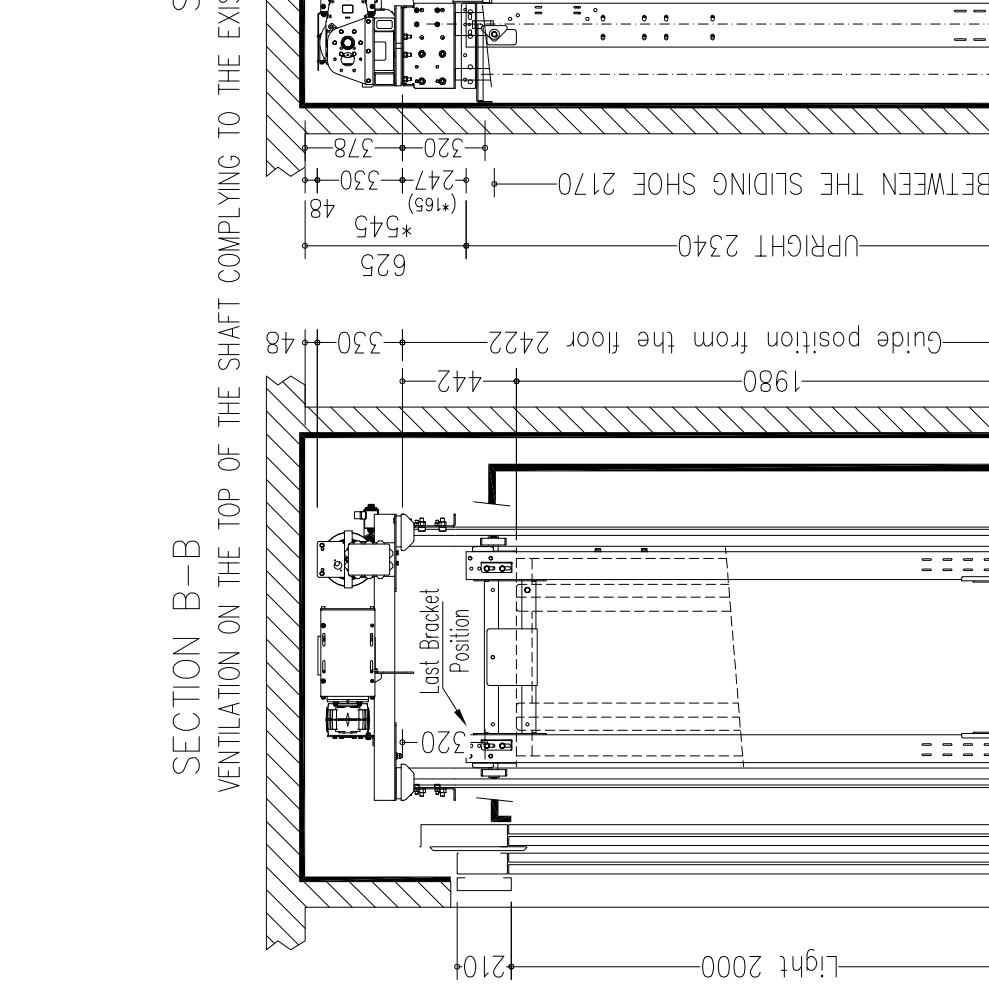
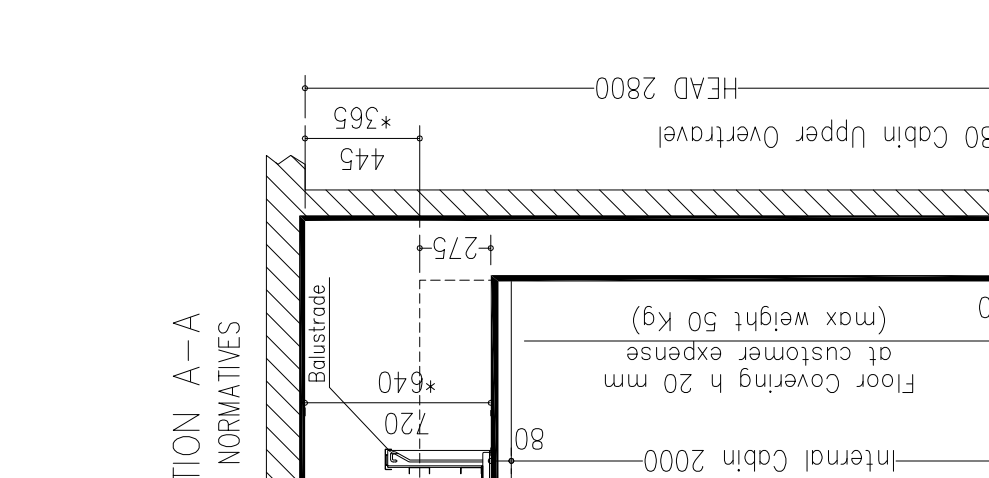
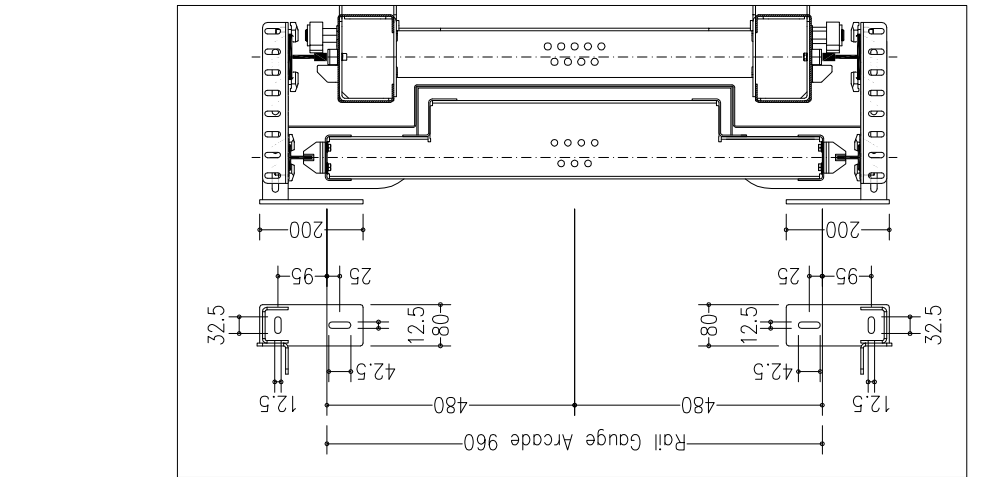
Interfloors  
G/1 = 3608 mm

THE QUOTES ON THE VERTICAL SECTIONS ARE NOT IN SCALE

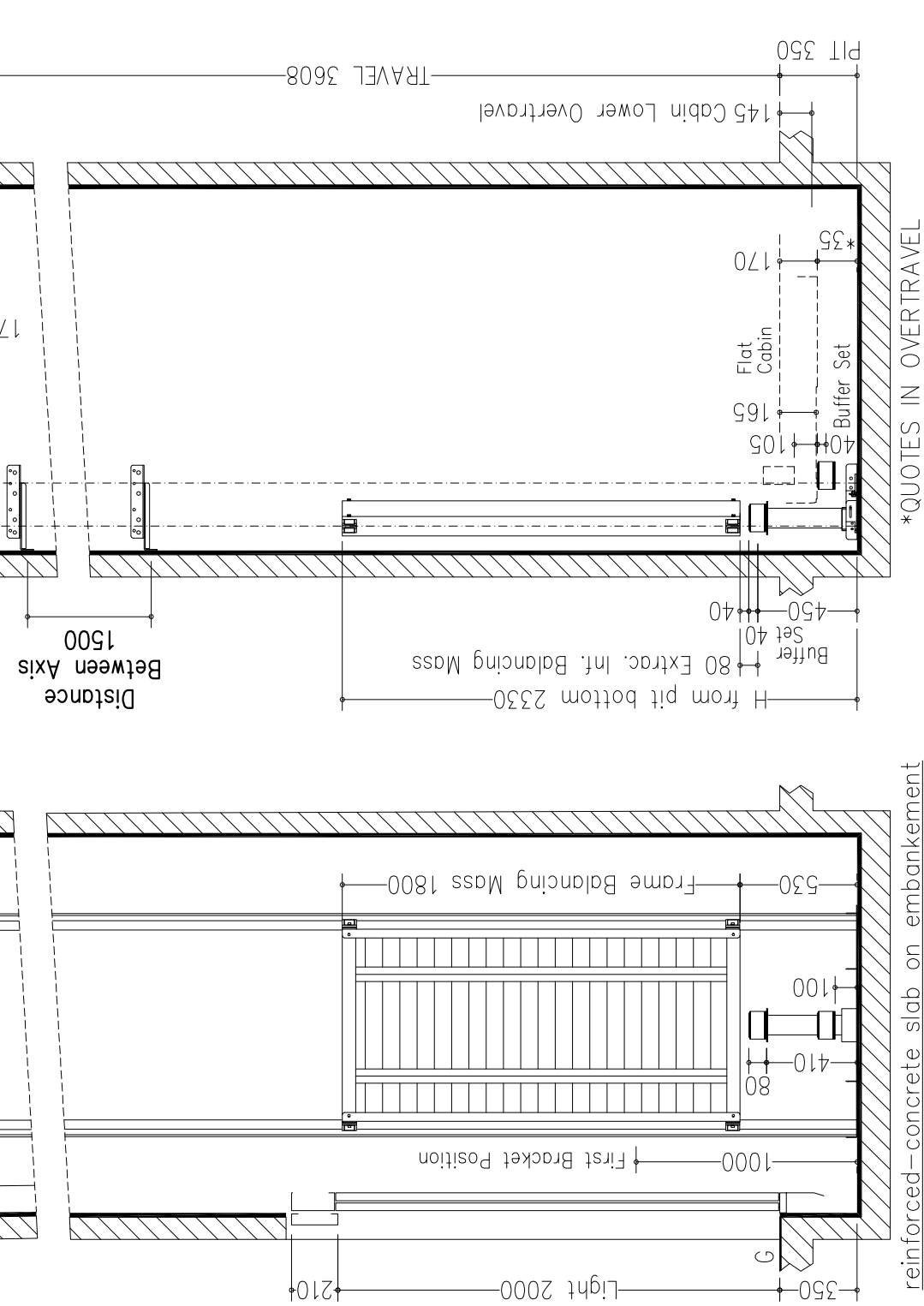
DISEGNO DEFINITIVO		
Sheet dimension	Scale	first draft
A3	1/30	L. Del Bianco 31/10/2016
Stops:	2	Doors: 2
Sheet	2/2	Sheet
Sheet dimension	Scale	1/30
final drawing 15/11/2016 D. Tomei		

Shaft typology: MASONRY  
Stops: 2 Doors: 2  
Date: SIGN  
Distance Between Axis 1500  
H from pit bottom 2350  
Buffer Set 40  
80 Extrac. Inf. Balancing Mass  
Flat Cabin 170  
Buffer Set 165  
105  
40  
145 Cabin Lower Overtravel  
PIT 350  
TRAVEL 3608  
145 Cabin Lower Overtravel  
80 Cabin Upper Overtravel  
HEAD 2800  
445  
\*365  
170  
45  
110  
Floor Covering h 20 mm (max weight 50 Kg)  
at customer expense  
640  
\*275  
Internal Cabin 2000  
80  
165  
720  
170  
45  
110

\*QUOTES IN OVERTRAVEL



reinforced-concrete slab on embankment



reinforced-concrete slab on embankment

NOTES FOR THE CUSTOMER  
THE HORIZONTAL AND VERTICAL LOAD BEARING STRUCTURES MUST BE ABLE TO SUSTAIN THE LOADS INDICATED. THE HOISTWAY SHAFT MUST BE VENTILATED ACCORDING TO THE EXISTING NORMATIVES AND CONSTRUCTED IN ORDER THAT ALL EQUIPMENTS INSIDE IT ARE PROTECTED FROM DUST, UNHEALTHY VAPOUR AND HUMIDITY. THE DIMENSIONS OF THE LEVATOR SHAFT MUST BE GUARANTEED WITH AN ALLOWANCES OF 1 CM AND THE WALLS MUST BE PERFECTLY PLUMBED. IN THE CASE IN WHICH THE PIT IS MORE THAN 500 MM BUILT-IN STEPS ARE NECESSARY (140X100X400). THE CUSTOMER HAS TO WATERPROOF THE PIT AFTER THE FIXING OF THE EQUIPMENT IN THE PIT BOTTOM. THE PROJECT IS COMPILED IN ACCORDANCE TO THE EXISTING NORMATIVES.  
FOR APPROVAL OF EVERYTHING CONCERNING THE MASONRY PARTS OF THE SHAFT.

DATE  
SIGN

Shaft typology: MASONRY		
Stops:	2	Doors: 2
Sheet	2/2	Sheet
Sheet dimension	Scale	1/30
final drawing 15/11/2016 D. Tomei		
DISEGNO DEFINITIVO		