

## FLOOR DOOR

Side B	Side C	Side D	VERSION	H LIGHT	H FRAME	FRAME	WINDOW	GLASS	ACCESSORIES
G		1	Standard RAL 9007 **	2000	2100	RAL 9007 **	Panoramic	Fumè	

C1 = Enabling key for the floor button pad (single insertion) C2 = Enabling key for the floor button pad (double insertion) PM = Button pad on the wall PE = Outside lock and button pad

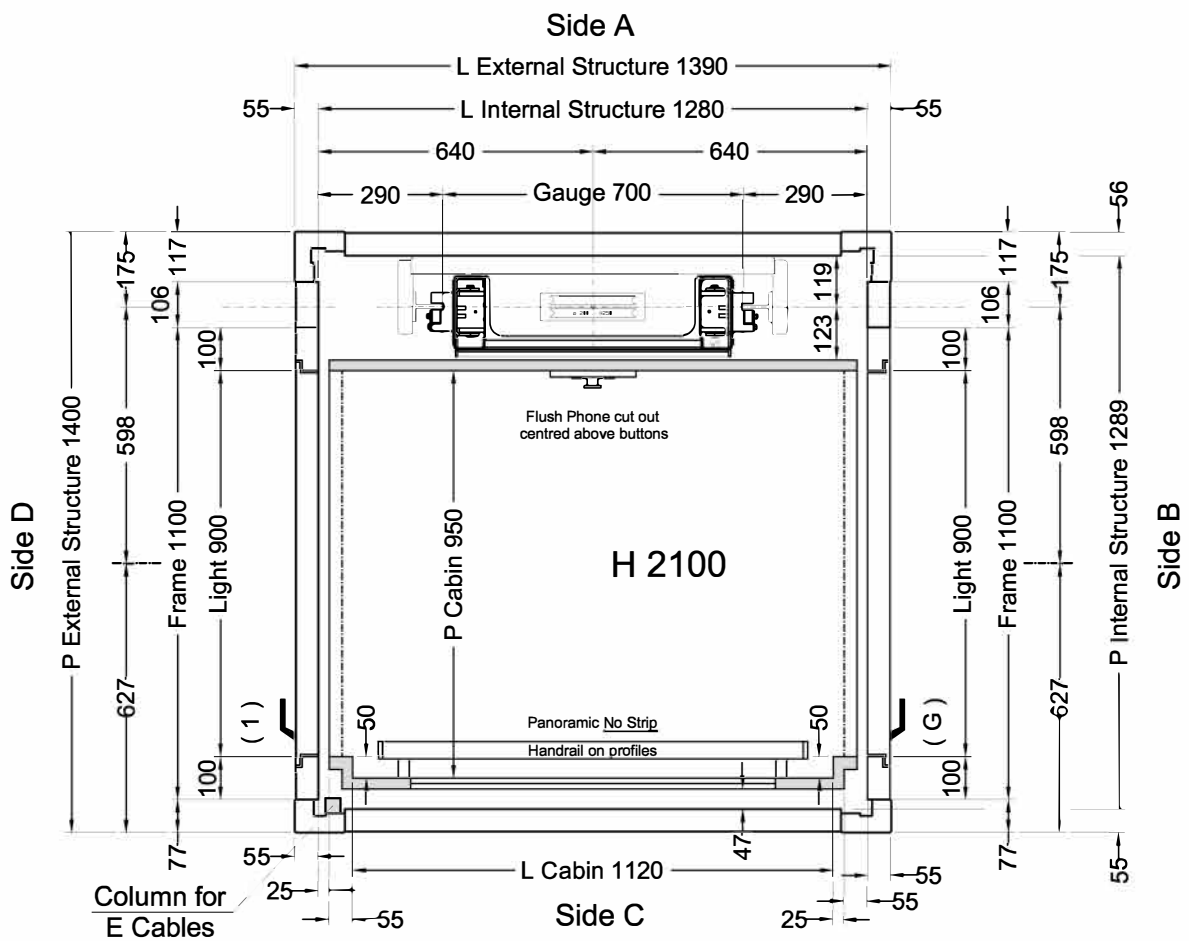
### Shaft V52 ()

ENVIRONMENT	VERSION	Cladding	START	ROOF	ANCHORAGE
Inside	G + RAL *	See pages 3 and 4	Pit bottom	For Inside	Anchorage to care of the Customer. Ancoraggio a cura del Committente.
Interno	Z + RAL *	Vedi Pag. 3 e 4	Fondo Fossa	Per interno	

(\*) Galvanized and RAL 9007 Semi-polished - Smooth finish

(\*\*) Semi-polished - Smooth finish - No raised edges

(\*) Zincata e RAL 9007 Semilucida Liscia



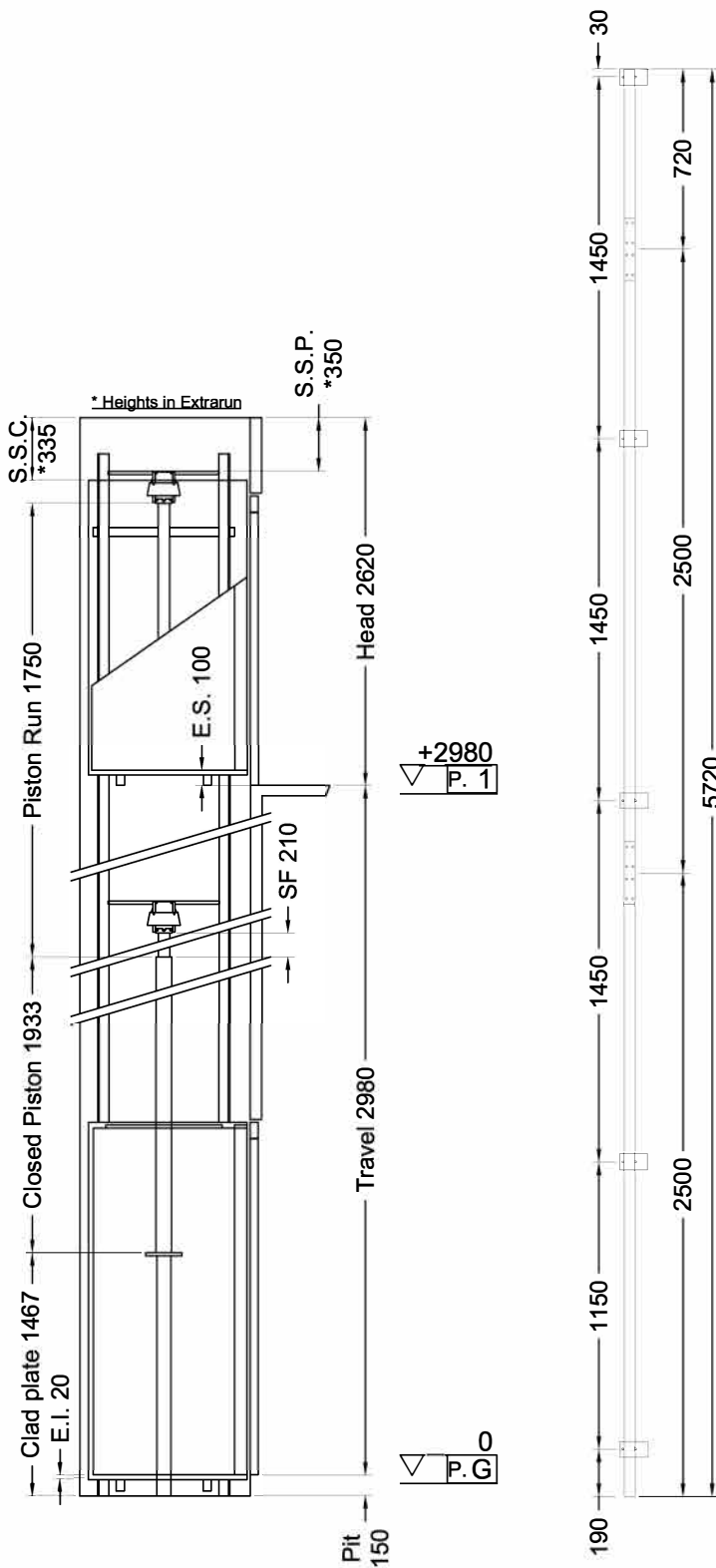
Cabina  
Classica

**Stops: 2 - Doors: 2**

Shaft in **Shaft V52 ()**



ORDER	VERSIONS	Description	Designer	Date	Final Drawings	
ORDER NUMBER		Corsa; Testata; P Est. Struttura; Porte ral semilucido; Accessori Cabina.	L. Del Bianco	13/06/2016	Model	SHEET
					ELFO	1/4
						SHEET DIMENS.
						A3
			Final Drawings L. Del Bianco	1° STESURA 18/07/16		SCALE 1:12.5
			CAPACITY 300 kg	AREA m² 1,07		CAPACITY



+2980  
P. 1

0  
P. G

<b>Indirect Installation</b>		Speed <b>0,3 m/s</b>	18/07/16 11.59 (V.2910) <sup>GD</sup>
<b>THRUST DURING NORMAL OPERATION</b>		<b>THRUST OF SAFETY DEVICE INTERVENT.</b>	
P	(N) <b>9302</b>	P	(N) <b>481</b>
N	(N) <b>524</b>	N	(N) <b>6245</b>
F1	(N) <b>1175</b>	F1	(N) <b>1958</b>
F2	(N) <b>267</b>	F2	(N) <b>446</b>
<b>SPACES</b>		<b>PRESSURES</b>	
E.I.	Extrarun below cabin (mm) <b>20</b>	Max static pressure	(bar) <b>31,13</b>
E.S.	Extrarun above cabin (mm) <b>100</b>	Min static pressure	(bar) <b>15,84</b>
SF.	Piston extraction (mm) <b>210</b>	Overpressure limit	(bar) <b>43,58</b>
S.S.P.	Piston/head (mm) <b>350</b>	Residual pressure	(bar) <b>1,25</b>
S.S.C.	Cabin/head (mm) <b>335</b>		
<b>HYDRAULIC UNIT</b>		<b>MECHANICAL PARTS</b>	
Central unit	<b>GMV HL 3010 (-*)</b>	Guide rails	<b>70x70x9</b>
Capacity (l/min)	<b>35</b>	Brackets	(Nr) <b>5</b>
Motor (V)	<b>MF230V</b>	Ropes	<b>Ø 8 mm 8-(1+9+9)</b>
Power (Kw)	<b>2,9</b>	Cables length (mm) 2 x	<b>8000</b>
Nominal current (A)	<b>27</b>	Min actual breaking load (N)	<b>43300</b>
Piston	<b>OMARLIFT HC (Ø)70x5x1750</b>		
Opt. oil position	<b>BASSO</b>		
Tubing	<b>3/4" EN 853 1SN - FD 3/4" - FD M30X2</b>		
Tubing length (mm)	<b>9000</b>		
Min hydraulic oil (L)	<b>40</b>		
<b>SECURITY DEVICES</b>	<b>Manufacturer</b>	<b>Model</b>	<b>Certificate</b>
Safety Gear	<b>PFB</b>	<b>BP1</b>	<b>TÜV AFV515</b>
Block Valve	<b>OMARLIFT</b>	<b>HC-34</b>	<b>TÜV 44 208 07 352266 004</b>
Key Locks	<b>Prudhomme</b>	<b>PLT/L/CPX NL 11-400-1002-125-02</b>	
<b>MACHINERY LOCATION</b>			
At floor	<b>G</b>	Length of the hose travel	<b>5000 (mm)</b>
Cables enter in shaft: Side	<b>A</b>		
<b>CABIN</b>	<b>CABIN ACCESSORIES</b>		
Panels	<b>Grigio N1</b>	Panoramic No Strip	<b>Side C</b>
Finishes	<b>F41PPS</b>	Handrail on profiles	<b>Inox S.B., Side C</b>
Oper. panel	<b>VERTICAL (Like finishes)</b>	Outside covering	<b>Side C, Roof</b>
Floor	<b>Gomma a Bolle - Nera</b>	Outside finishing	<b>F41PPS</b>
Ceiling	<b>LABIRINT - F41PPS</b>		
<b>OTHER ACCESSORIES</b>			
Enabling key for the cabin button pad, double insertion			
Guides dimension 2.5 m			
Manual pump			
Manostat with overweight signal			
<b>Two speed</b>			
Return to the lower floor after adjustable time			
Handles CASPIM (Long)			
<b>Telephone by Lift Shop</b>			
Full height infra-red curtain V2			
<b>Roof covering</b>			
Automatic Control 2011			
Call Accept + Emergency manual descent from cabin			
Cut out for flush phone 86 mm x 175 mm on COP centred above buttons			
Cabin Buttons: "G, 1"			



ORDER	CLIENT
ORDER NUMBER	

Final Drawings	L. Del Bianco	1° STESURA	18/07/16
Final Drawings			
SCALE	OUT OF SCALE	SHEET	2/4