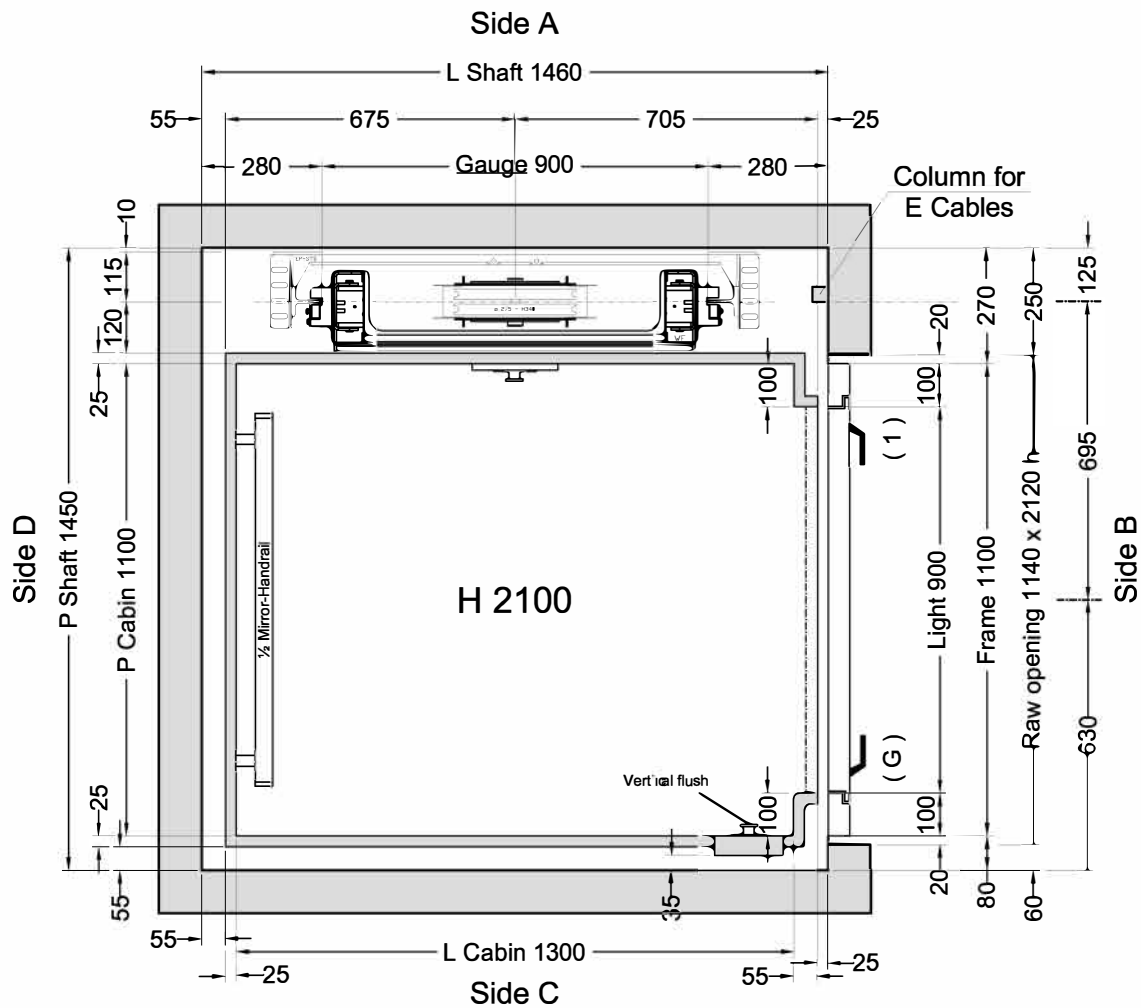


FLOOR DOOR

Side B	Side C	Side D	VERSION	H LIGHT	H FRAME	FRAME	WINDOW	GLASS	ACCESSORIES
G 1			Standard RAL 7035 *	2000	2100	RAL 7035 *	Mono PS1	Transparent	C2 - Doors Hold Open Latch

C1 = Enabling key for the floor button pad (single insertion) C2 = Enabling key for the floor button pad (double insertion) PM = Button pad on the wall PE = Outside lock and button pad

(*) Matt - Smooth finish - No raised edges



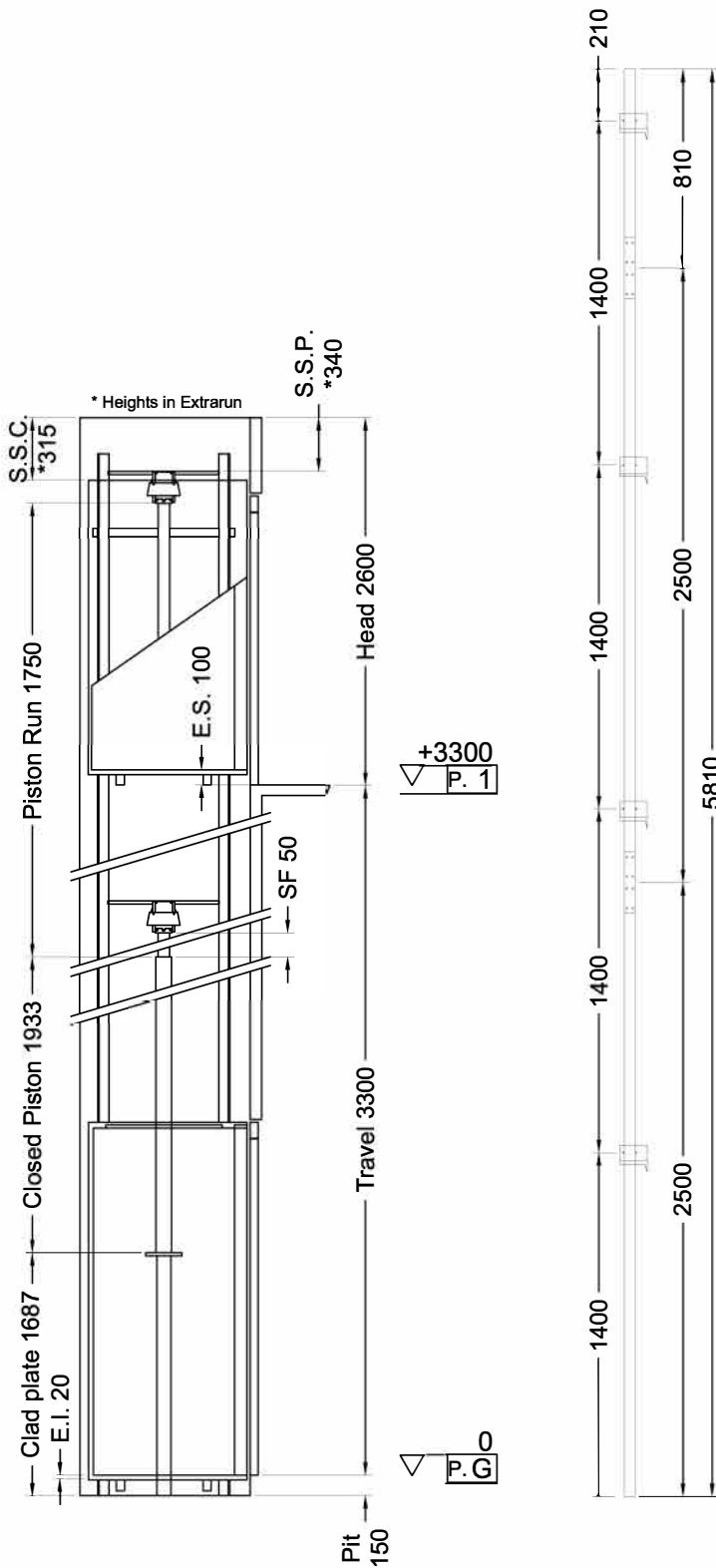
Cabina
Classica

Stops: 2 - Doors: 2

Shaft in **Reinforced concrete (C.A.)**



ORDER	Description	Designer	Date	Final Drawings	
ORDER NUMBER	Soglia standard; Flush COP su angolo C/B; Corretto LM.	L. Del Bianco	25/01/2017	Model	SHEET
VE		Oglioastro	19/01/2017	ELFO	1/2
modifiche varie	D.	Oglioastro	25/11/2016		SHEET DIMENS.
odi fiche varie	m	Final Drawings	1° STESURA		A3
	CLIENT	L. Del Bianco	25/01/17	SCALE	1:12.5
	PLACE OF INSTALLATION	CAPACITY	AREA m²	CAPACITY	
		300 kg	1,43		



Indirect Installation Speed 0,3 m/s 25/01/17 14.14 (V.2952) ^{62D}

THRUST DURING NORMAL OPERATION			THRUST OF SAFETY DEVICE INTERVENT.		
P	(N)	11251	P	(N)	530
N	(N)	554	N	(N)	7524
F1	(N)	1603	F1	(N)	2671
F2	(N)	359	F2	(N)	598

SPACES		PRESSURES		
E.I.	Extrarun below cabin (mm)	20	Max static pressure (bar)	34,82
E.S.	Extrarun above cabin (mm)	100	Min static pressure (bar)	19,53
SF.	Piston extraction (mm)	50	Overpressure limit (bar)	48,75
S.S.P.	Piston/head (mm)	340	Residual pressure (bar)	1,38
S.S.C.	Cabin/head (mm)	315		

HYDRAULIC UNIT		MECHANICAL PARTS	
Central unit	GMV HL 3010 (-*)		
Capacity (l/min)	35	Guide rails	70x70x9
Motor (V)	MF230V	Brackets	(Nr) 4
Power (Kw)	2,9	Ropes	Ø 9 mm 6-(1+9+9)
Nominal current (A)	27	Cables length (mm) 2 x	9000
Piston	OMARLIFT HC (Ø)70x5x1750	Min actual breaking load (N)	47300
Opt. oil position	BASSO		
Tubing	3/4" EN 853 1SN - FD 3/4" - FD M30X2		
Tubing length (mm)	8000		
Min hydraulic oil (L)	40		

SECURITY DEVICES	Manufacturer	Model	Certificate
Safety Gear	PFB	BP1	TÜV AFV515
Block Valve	OMARLIFT	HC-34	TÜV 44 208 07 352266 004
Key Locks	Prudhomme	PLT/L/CPX NL 11-400-1002-125-02	

MACHINERY LOCATION			
At floor	G	Length of the hose travel	4000 (mm)
Cables enter in shaft: Side	A		

CABIN		CABIN ACCESSORIES	
Panels	Blu Stellato B41SMM	½ Mirror	Side D
Finishes	F41PPS	Handrail	Inox S.B., Side D
Oper. panel	Vertical - Flush mounted **	Outside covering	Roof
Floor	TOUCH 2410	Outside finishing	F41PPS
Ceiling	LABIRINT - F41PPS		

(**) Corner C/B - Inox Scotch Brite

OTHER ACCESSORIES

Enabling key for the cabin button pad, double insertion
 Guides dimension 2.5 m
Two speed
 Handles CASPIM (Long)
Telephone by Lift Shop
 Cabinet: Blu Stellato B41SMM
 Full height infra-red curtain V2
Roof covering
 Automatic Control 2011
Call Accept + Emergency manual descent from cabin
Blue Buttons - Cabin Buttons: "G, 1"
Doors Hold Open Latch



ORDER
 ORDER NUMBER

CLIENT

Final Drawings
 L. Del Bianco
 Final Drawings
 SCALE
 OUT OF SCALE
 1° STESURA
 25/01/17
 SHEET
 2/2