

ELEVATOR BOUTIQUE

life with style

E2





**IT IS MORE THAN JUST
AN ELEVATOR**

IT IS A WINNING PROCESS

You are supported from the start onwards.
Our designers will create the right elevator,
personalized to match your style.

After the design is finalized, our team will ship
and install your elevator.

The service department will provide 24/7
assistance after installation.



EXPERIENCE, EFFICIENCY AND SCALE

Our experience is proven by a long history, secure manufacturer and reliable team. As a full service company, we sell more elevators than any other home elevator specialist. Multiple locations and thousands of new and routine service clients allow us to deliver a premium product at an unbeatable value.

AUTOMATION AND LUXURY

Sliding doors offer refined style and silently smooth automation at the touch of a button. Accentuate your space with luxury.





A DYNAMIC DESIGN

Premium craftsmanship and a flawless performance are at the heart of the E2 design.

Framed Glass Doors | Brushed Stainless Steel
Glass Transparent



THE CLASSICA CABIN

Extend features of raised wall trims
and corners from your home into
your elevator.

Frame Finish RAL 8022 | Ceiling Labirint
Italian skinplate DL36A Legno Scuro | Mirror Grey






THE MODERNA CABIN

Flush trims and corners seamlessly integrate with cabin walls.

Framed Glass Doors | Panoramic Transparent

Polished Stainless Steel | Ceiling Spotlight A1 Bianco



Walls | Italian skinplate A1 Bianco | Ceiling Labirint

Trims and Corners | A32PP Bianco Lucido

PREFERRED FINISHES

Our preferred cabin interior finishes are available on the wall panel, trims and corners, ceiling, car operating panel, cabin doors and landing doors.

You have the customizable options of RAL powdercoated and skinplate.



PREMIUM FINISHES

Our most frequently selected cabin finishes like stainless steel, panoramic glass and mirrored walls offer a sleek and impressive look.

Walls | Italian skinplate N3S Matte Black | Floor | Black Star
Trims and Corners | Brushed Stainless Steel



LUXURY FINISHES

Our luxury cabin finishes like ARPA Laminata and Steel Color offer the ultimate home elevator experience.

Steel Color Champagne Lucido

ARPA Laminata 4518



Frame Finish RAL 8022 | Ceiling Labirint | Italian skinplate DL36A Legno Scuro

Mirror Grey | Floor by Others

PREFERRED ACCESSORIES

Feel the comfort of automatic sliding doors at the touch of a button, and the security of your locked elevator with the ease of a key switch. Options of buttons on the door frame or on a wall plate.



PREMIUM ACCESSORIES

Unlock premium accessories for extra safety features like a handrail and security keypad.



LUXURY ACCESSORIES

Know what floor your elevator is on and securely call it with luxury accessories. Upgrade to a blue or black Icaro digital display.



CEILING

Illuminate your cabin with our preferred and premium ceiling designs. For a more intimate view, upgrade to our luxury ceiling Starry Sky.






FLOORS

Supply your own floor to integrate your design or upgrade to our premium vinyl or luxury stone floors.

PREFERRED DOORS

Doors that are timeless. Our preferred doors are solid steel, powdercoated in RAL Colors or finished with skinplate.

A full-length view of a white door set. The door has a skinplate finish and a door frame. The door is closed, and the frame is visible. The door has a small circular detail on the right side.

Landing Doors | Italian skinplate A32PP Bianco Lucido
Door Frame | RAL 9016 Traffic White

PREMIUM DOORS

For a touch of elegance, our premium doors are solid stainless steel or framed glass.



Framed Glass Doors

Glass Fume Smoked | Door Frame | RAL 9010 Pure White

LUXURY DOORS

For refined elegance, our luxury doors are finished with Steel Color or finished with ARPA Laminate. For glass, options are frameless or diamond.



Frameless Doors | Glass Bronzed

Door Frame RAL 9001 Cream | Polished Stainless Steel



Walls | Arpa Laminate

Trims and Corners | Brushed Stainless Steel

CAR OPERATING PANEL

The Classica Cabin preferred COP options are Vertical or Small Vertical with skinplate or RAL Powdercoated finishes.

Flush vertical for a premium COP or turn it horizontal for a luxury COP with Stainless Steel finishes.



The Moderna Cabin preferred COP comes only with flush vertical. Finish options of skinplate and RAL Colors or premium Stainless Steel.

Walls | Italian skinplate F41PPS Argento Metallizzato

Trims and Corners | Polished Stainless Steel

Ceiling | Spotlights F41PPS



SHAFTS

We bring the structure, you bring the cladding in our bones only preferred shaft. Powdercoated in RAL Colors.

Add cladding and additional finishes in stainless steel with our premium shaft.

Upgrade to glass cladding for a luxury shaft.

SPECIFICATIONS

	H - HYDRAULIC	E - ELECTRIC
CAPACITY	882 lbs	882 lbs
SPEED	35-59 ft Per Min	59 ft Per Min
POWER REQUIREMENTS	240VAC 40A or 208VAC 30A	240VAC 30A
DRIVE SYSTEM	Roped Hydraulic	Electric Traction
OPENINGS	Single, Opposite, Adjacent	Single, Opposite, Adjacent
RESCUE OPERATION	Included	Included
COMPLIANCE	Refer to AHJ	Refer to AHJ

DIMENSIONS

MAX TRAVEL	50 ft	50 ft
HEADROOM	94.5 - 102.4 in	106.3 in
PIT DEPTH	5.9 - 7.5 in	6.7 in
DOOR HEIGHT	80.7 - 82.7 in	80.7 - 82.7 in
CABIN HEIGHT	82.7 - 85.8 in	82.7 - 85.8 in
CABIN MIN	34 x 34 in	34 x 34 in
CABIN MAX	47.2 - 55.1 in	47.2 - 55.1 in
MACHINE SPACE	27.6 x 22 x 60.4 in	27.6 x 22 x 60.4 in MRL

**TIER
OPTIONS**

PREFERRED

PREMIUM

LUXURY

CABIN

KEY SWITCH



HANDRAIL



SECURITY KEYPAD



DIGITAL DISPLAY



OUTSIDE COVERINGS



DOORS

SOLID



FRAMED GLASS



FRAMELESS GLASS



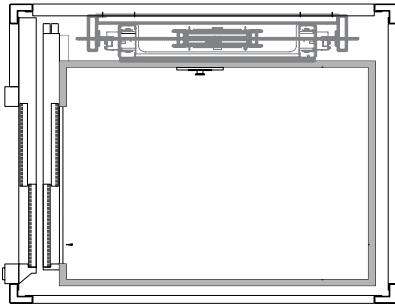
DIAMOND GLASS



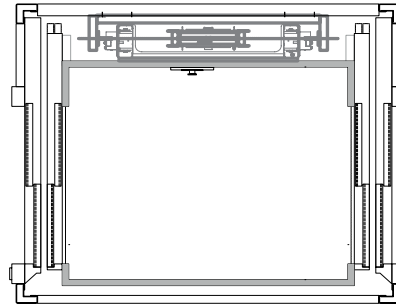
FINISH AVAILABILITY

	SKINPLATE	RAL COLOR	STAINLESS STEEL	GLASS	MIRROR	STEEL COLOR	ARPA LAMINATE
CABIN							
WALLS	●	●	●	●	●	●	●
TRIMS AND CORNERS	●	●	●			●	
CAR OPERATING PANEL	●	●	●				
HANDRAIL			●				
CEILING	●	●	●			●	
OUTSIDE COVERINGS	●	●	●			●	
DOORS							
SOLID	●	●	●			●	●
FRAMED GLASS		●	●	●		●	
FRAMELESS GLASS		●	●	●			
DIAMOND GLASS				●			
LANDING FRAME FINISH		●	●			●	

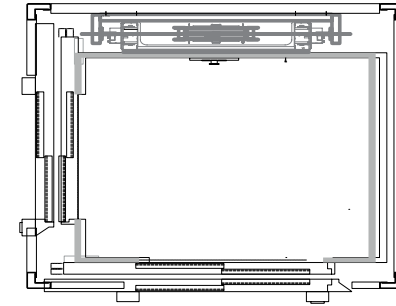
CONFIGURATIONS



SINGLE



OPPOSITE



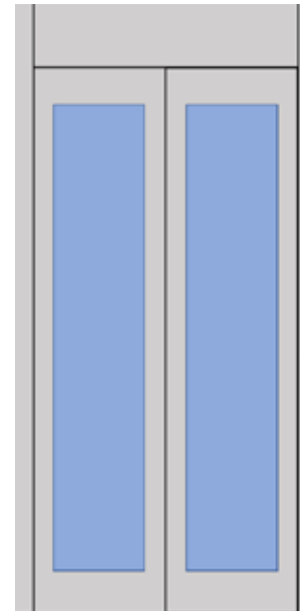
ADJACENT



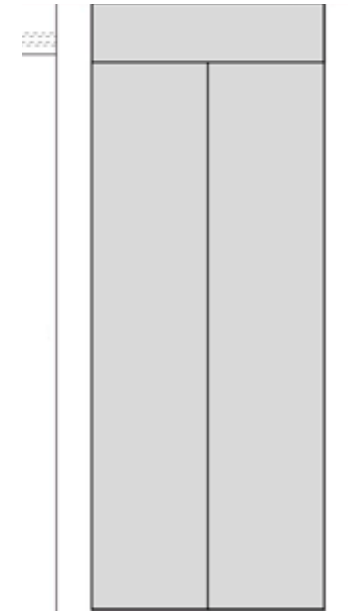
CLASSICA



MODERNA



FRAMED GLASS
DOORS



SOLID DOORS

HANDRAILS



Aluminum

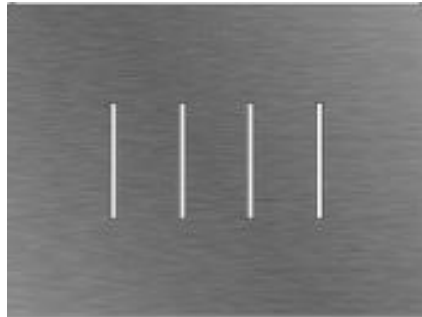


Brushed Stainless

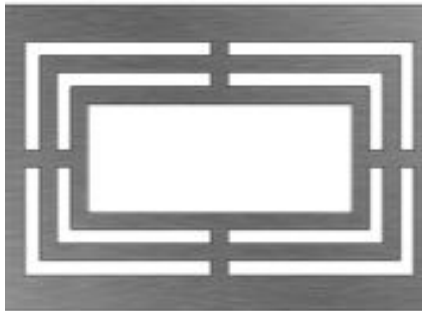


Polished Stainless

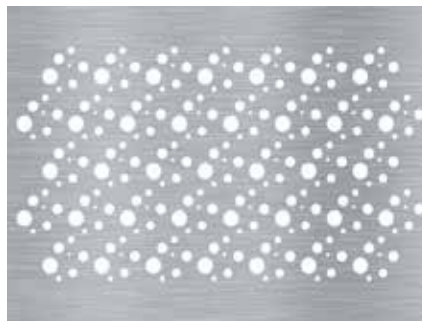
CEILINGS



Line



Labirint



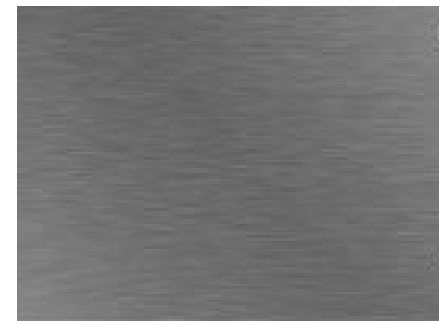
Starry Sky



Regular



Spotlights



Custom

MATERIALS

ITALIAN SKINPLATE



N490PP
Matte White



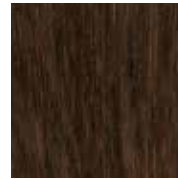
DL8A
Legno Chiaro
Whitewash Timber



F12PPS
Similinox
Stainless Steel Look



F41PPS
Argento Metallizzato
Metallic Silver



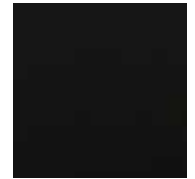
DL36A
Legno Scuro
Dark Wood



N4SA
Dark Gray



N3PP
Nero Lucido
Gloss Black



N3S
Matte Black

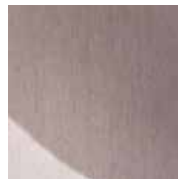
STEEL COLOR



Pallinato



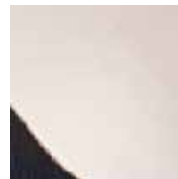
Grigio
Satinato



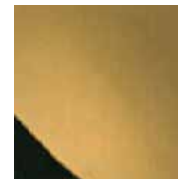
Bronzo
Lucido



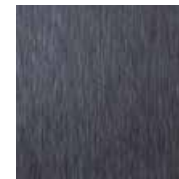
Champagne
Satinato



Champagne
Lucido



Oro
Lucido

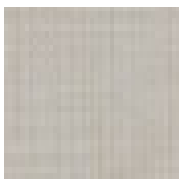


Nero
Satinato



Nero
Lucido

ARPA LAMINATE



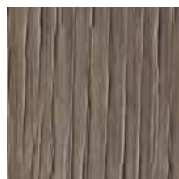
2619
Sixty Crema



4071
Rovere Calcinato
Beige



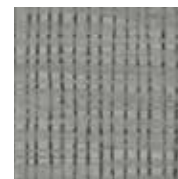
4518
Nocino



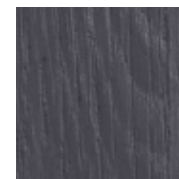
4367
Rovere Rhone



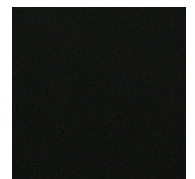
4511
Rovere Fumo



3320
Cannovaccio



4517
Rovere Carbone

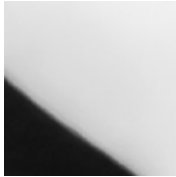


0509
Nero

STAINLESS STEEL



Brushed



Polished

MIRROR



Silver / Grey / Bronze

RAL COLORS



GLASS



Transparent



Etched Neutral



Milky White



Fume Smoked



Pure White



Pub Nero Black



Bronzed

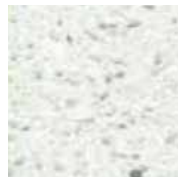


Stop-Sol Grey
Reflective

STONE FLOORS



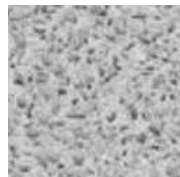
Polar Ice



White Star



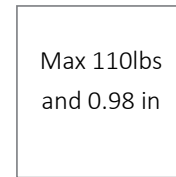
Perla Bianca



Dove Tail



Black Star



Max 110lbs
and 0.98 in

Custom

A modern elevator with a black door and marble-clad side panels. The door is closed, and the side panels have a dark brown marble pattern with white veins. The elevator is set against a light-colored wall.

CALIFORNIA

143 E 16th St
Costa Mesa CA 92627
+1 855 326 8847
sales@elevatorboutique.com

SYDNEY

MELBOURNE

BRISBANE

PERTH