

A modern interior space featuring a white, curved spiral staircase with a gold handrail. To the left is a large, gold-colored sliding door. The floor is dark wood, and the walls are white. A vertical gold light fixture is on the wall near the staircase.

ELEVATOR BOUTIQUE

E2 SLIDING DOOR
CUSTOM RANGE

**"IT IS MORE THAN JUST AN
ELEVATOR, IT IS A WINNING
PROCESS."**

The E2 Sliding Door's unmatched and fully customized features will transform your home and elevate your everyday experience at the touch of a button.

Smart engineering, premium craftsmanship and state of the art technology means safety will always be the number one priority.

LES KATZ

CHAIRMAN



E2



E2 SLIDING DOORS

The E2 is as enticing as it is functional. Optimized performance from automated sliding doors made from premium materials make the everyday ride convenient and luxurious.







WHEN YOU JUST WANT TO MAKE ONE TRIP

Whether it's carrying your child, groceries, luggage or pets, the E2 will always have your back with the ease of automated sliding doors, a large carrying capacity and efficient speeds.

WHAT DRIVE TYPE ARE YOU

ELECTRIC

Seamless performance.
Smooth, quiet and
machine room-less.



HYDRAULIC

Affordability without
compromising on performance.
Efficient and comfortable
travel every time.





WINNING AT SAFETY ON EVERY LEVEL

We are ahead of the curve with exclusive safety features like In Cabin Self Rescue should you need to safely travel to the nearest floor, and Self Lowering in the event of power outages to ensure that you always feel in control.





OUTER BEAUTY FROM EVERY ANGLE

Complimentary to your home interiors, the E2 Sliding Door's beauty is as exclusive as it is practical. Automated doors made from premium materials with side or center openings make the everyday ride comfortable.





STEP INSIDE

Inside the E2, every design aspect has a purpose with fully customizable eye-catching finish combinations. Our carefully selected materials are designed to make you feel the ultimate level of comfort and luxury.





THE CLASSICA CABIN

Want your moulding to extend into your cabin? Raised wall trims and corners will accentuate the cabin as it does your home.

THE MODERNA CABIN

The difference is in the details.
Flush wall trims for a minimalist
design and refined experience.



THINGS ARE LOOKING BRIGHTER

Light up your cabin with our custom LED lighting designed to suit the mood, sure to leave an impression on anyone who enters.



WALK WITH CONFIDENCE

No detail goes overlooked, especially the ground you walk on. For complete exclusivity, supply your flooring to match your home interiors, or choose from our selection of premium stone flooring designs.







YOU'RE IN CONTROL

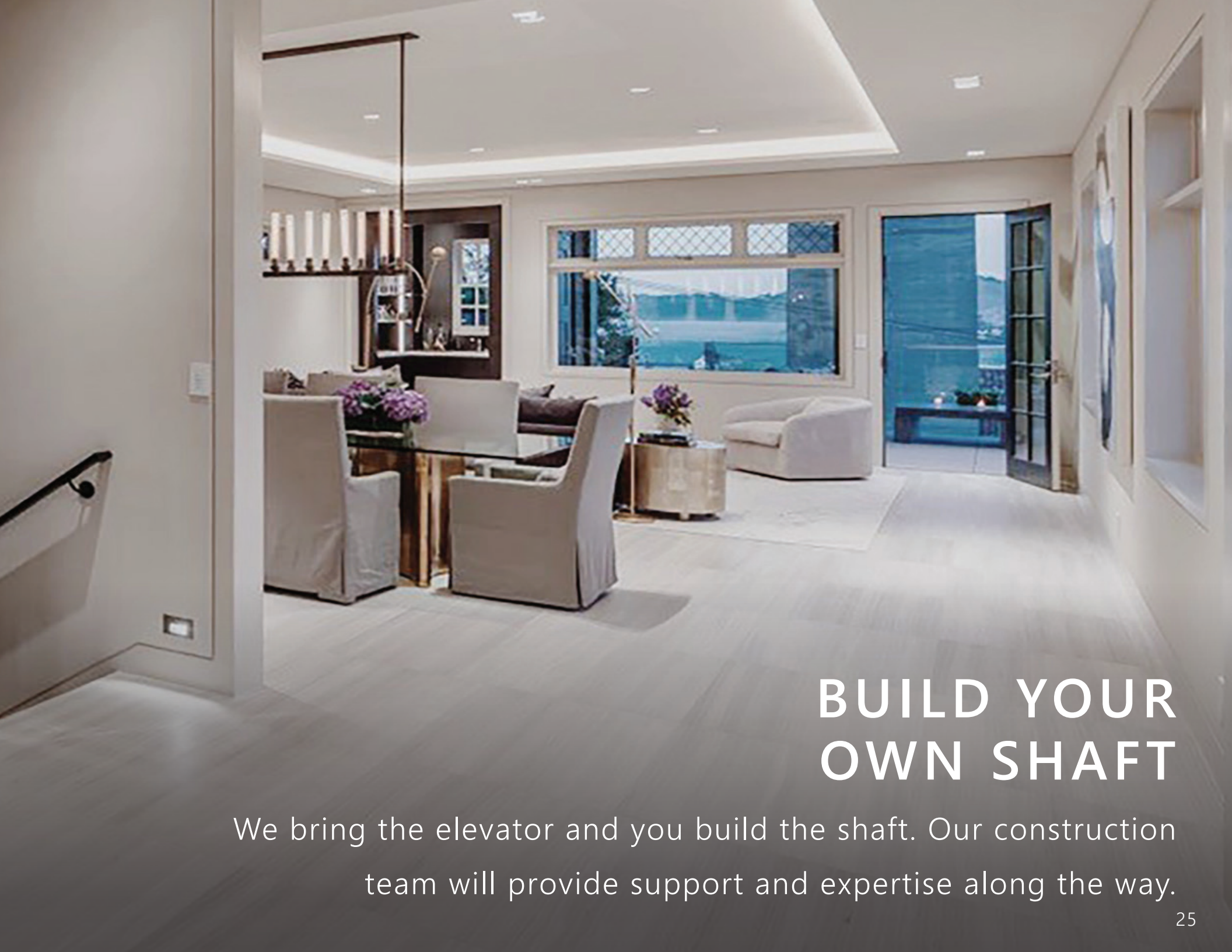
Welcome to your car operating panel. Easy navigation with our stainless steel buttons, color illumination and digital displays.

Integrated flush phone system for convenient assistance and assurance. Additional security options to suit.



WE BRING THE SHAFT TO YOU

We bring the elevator and the shaft.
Hundreds of custom finishes and colors available.



BUILD YOUR OWN SHAFT

We bring the elevator and you build the shaft. Our construction team will provide support and expertise along the way.

SPECIFICATIONS

H - HYDRAULIC

E - ELECTRIC

CAPACITY	882 lbs	882 lbs
SPEED	35-59 ft Per Min	59 ft Per Min
POWER REQUIREMENTS	240VAC 40A or 208VAC 40A	30A
DRIVE SYSTEM	Roped Hydraulic	Electric Traction
OPENINGS	Single, Opposite, Adjacent	Single, Opposite, Adjacent
RESCUE OPERATION	Included	Included
COMPLIANCE	Refer to AHJ	Refer to AHJ

DIMENSIONS

MAX TRAVEL	50 ft	50 ft
HEADROOM	98.4 - 102.4 in	106.3 in
PIT DEPTH	5.9 - 7.5 in	6.7 in
DOOR HEIGHT	80.7 - 82.7 in	80.7 - 82.7 in
CABIN HEIGHT	82.7 - 85.8 in	82.7 - 85.8 in
CABIN MIN	34 x 34 in	34 x 34 in
CABIN MAX	47.2 - 55.1 in	47.2 - 55.1 in
MACHINE SPACE	27.6 x 22 x 60.4 in	Machine Room Less



ELEVATOR OPTIONS

INCLUSIONS

UPGRADES

CABIN

KEY SWITCH



HANDRAIL / KEYPAD / DIGITAL DISPLAY



DOORS

SOLID



FRAMED / FRAMELESS GLASS



DIAMOND



OPENINGS

SIDE OPENING



CENTER OPENING



FINISHES

RAL COLORS / SKINPLATE



GLASS / MIRROR / STAINLESS STEEL / STEEL COLOR / ARPA LAMINATE



LANDING BUTTON

DOOR FRAME



WALL PLATE



ACCESSORIES

BUTTON COLORS



SILVER



GOLD



BLACK



KEY SWITCH

DIGITAL DISPLAY COLORS



BLUE



BLACK



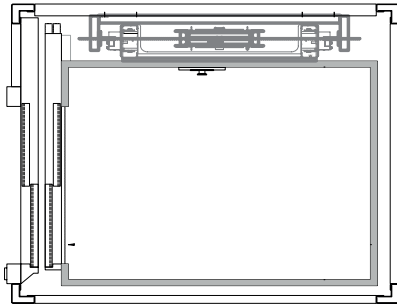
SECURITY KEYPAD

FINISH AVAILABILITY

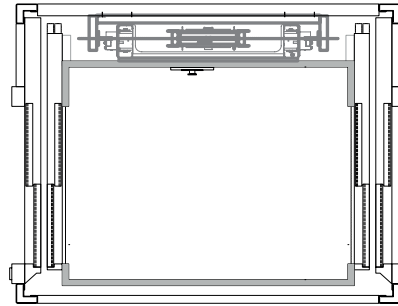
	SKINPLATE	RAL COLOR	STAINLESS STEEL	GLASS	MIRROR	STEEL COLOR	ARPA LAMINATE
CABIN							
WALLS	●	●	●	●	●	●	●
TRIMS AND CORNERS	●	●	●			●	
CAR OPERATING PANEL	●	●	●			●	
HANDRAIL			●				
CEILING	●	●	●			●	
OUTSIDE COVERINGS	●	●	●			●	
DOORS							
SOLID		●	●			●	
FRAMED / FRAMELESS GLASS		●	●	●		●	
DIAMOND				●			
LANDING FRAME FINISH		●	●			●	



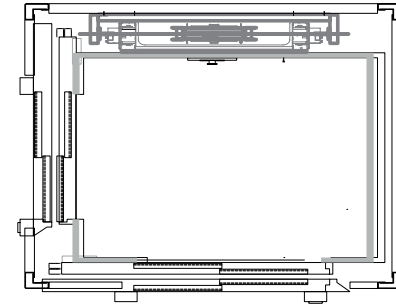
CONFIGURATIONS



SINGLE



OPPOSITE



ADJACENT

CABIN

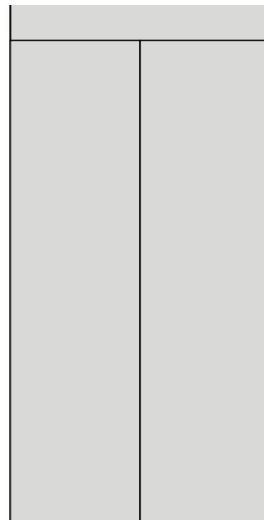


CLASSICA

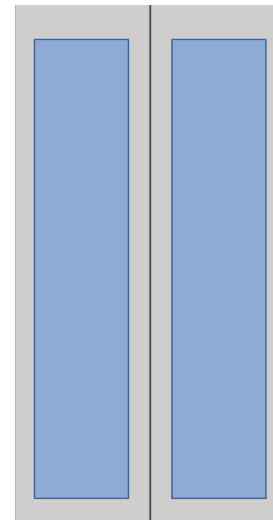


MODERNA

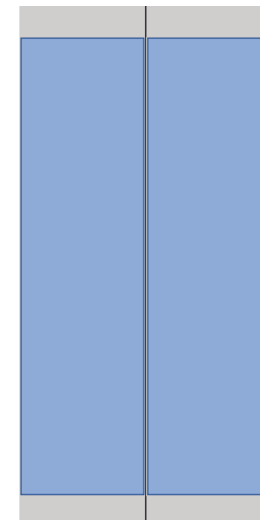
DOORS



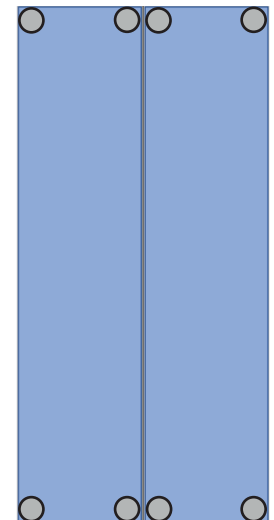
SOLID OR
FIRE RATED



FRAMED GLASS



FRAMELESS



DIAMOND

HANDRAILS



ALUMINUM

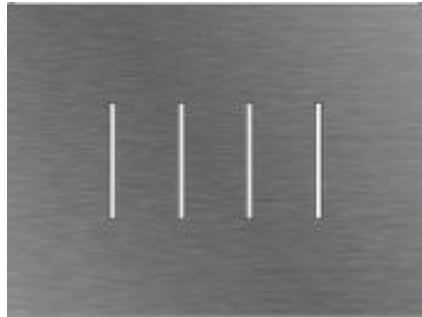


BRUSHED STAINLESS

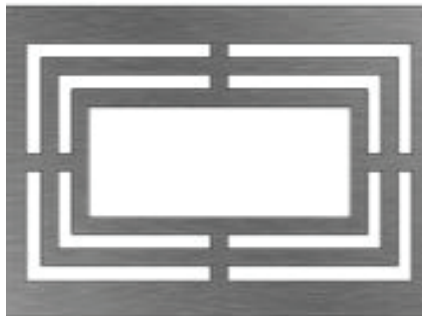


POLISHED STAINLESS

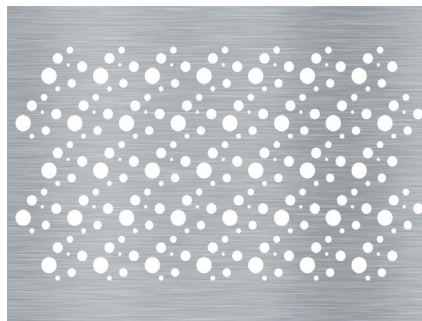
CEILING



LINE



LABIRINT



STARRY SKY



REGULAR



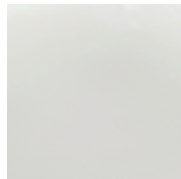
SPOTLIGHTS



CUSTOM

MATERIALS

ITALIAN SKINPLATE



A490PP
Matte White



DL8A
Whitewash Timber



F12PPS
Similinox



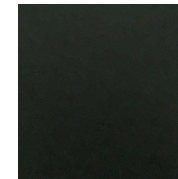
F41PPS
Stainless Steel Look



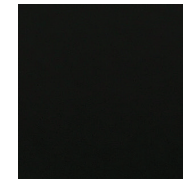
PPS11
Avorio



DL36A
Dark Wood

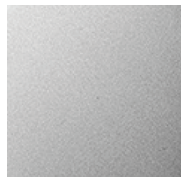


N4SA
Dark Gray



N3S
Matte Black

STEEL COLOR



Pallinato



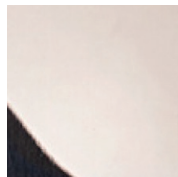
Grigio
Satinato



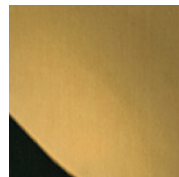
Bronzo
Lucido



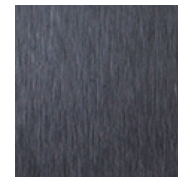
Champagne
Satinato



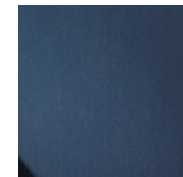
Champagne
Lucido



Oro
Lucido

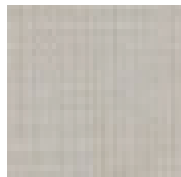


Nero
Satinato

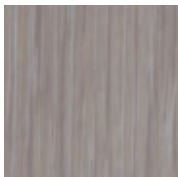


Nero
Lucido

ARPA LAMINATE



2619
Sixty Crema



4071
Rovere Calcinato
Beige



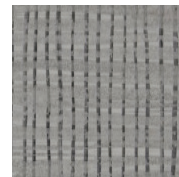
4518
Nocino



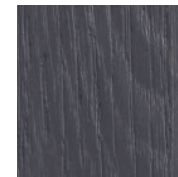
4367
Rovere Rhone



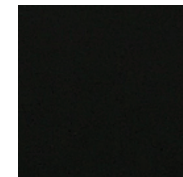
4511
Rovere Fumo



3320
Cannovaccio



4517
Rovere Carbone



0509
Nero

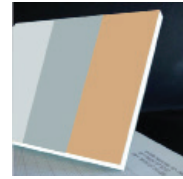
STAINLESS STEEL



Brushed



Polished



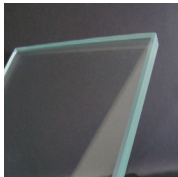
Silver / Grey / Bronze

MIRROR

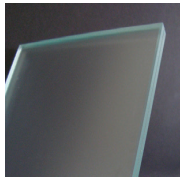


RAL COLORS

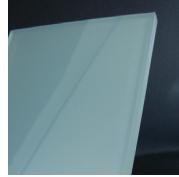
GLASS



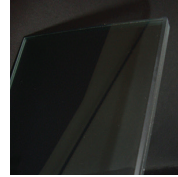
Transparent



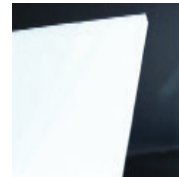
Etched Neutral



Milky White



Fume Smoked



Pure White



Pub Nero Black



Bronzed

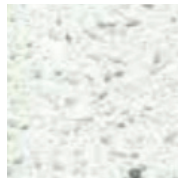


Stop-Sol Grey
Reflective

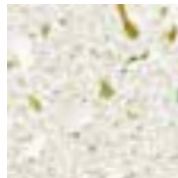
STONE FLOORS



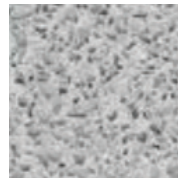
Polar Ice



White 2400



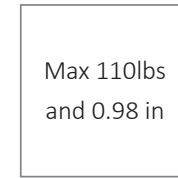
Perla Bianca



Dove Tail



Black Star



Max 110lbs
and 0.98 in

Custom

UNITED STATES

CALIFORNIA

NEVADA

AUSTRALIA

SYDNEY

MELBOURNE

BRISBANE

CANBERRA

PERTH

(855) 326 - 8847

Copyright © 2022. Elevator Boutique LA, LLC. All Rights Reserved.