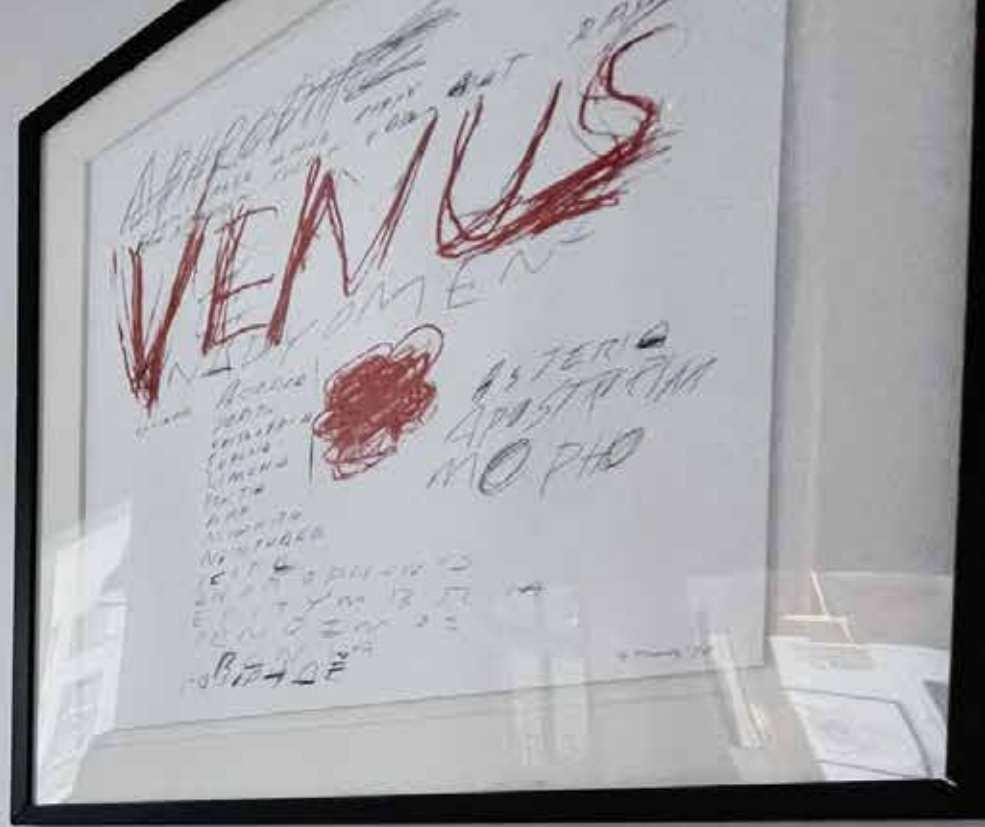


A SERIES
SWING DOOR
MADE IN ITALY



8 great reasons to choose Lift Shop

01

CERTAINTY

A showroom visit lets you experience the lift before you own it.

Showroom visits are essential to help you learn and experience the proposed lift system.

Informed and educated purchasers usually select the best.

Research your options carefully.

Our showrooms are incredible learning environments.

02

THE SAFEST LIFTS

In-cabin self-rescue feature is a standard inclusion.

24/7 call centre assistance.

AS1735 code compliant.

Full height infra-red light ray curtains.

Automatic lower and unlocks in the event of a power failure.

Proven reliability.

Proven technology.

03

THE LEADER FOR TECHNOLOGY

2 speed drives for maximum speed with smooth acceleration.

Computer monitoring of the latest lift operations for efficient diagnosis and repair.

Sized to suit, and styled to suit, has always been the Lift Shop advantage and the big difference from others.

04

THE PROCESS

We are not like the others.

Our designers assist to create the right lift, personalised to your requirements.

After your order is agreed, the construction support, site managers and installation teams will ship your Italian made lift to site and install it.

Our 140+ full time and experienced employees are installing more than 1200 new lifts a year. The service department provides 24/7 support after that.

At Lift Shop you are supported from the start onwards. Its more than just a lift, it's a winning process.

05

UNBEATABLE VALUE

Our formula

Lifts – proven long history, stable and secure manufacturer, ultra-reliable premium quality.

Volumes – Lift Shop sells more lifts than any other Australian home lift specialist.

Costs – Annual costs shared by 5 offices, 700+ new lift clients, and thousands of routine service clients.

We do not have hidden extras.

Experience + efficiency + scale
= Great Value

06

A GENUINELY GREAT REPUTATION

Check Google Reviews and sites like productreview.com.au

100's of genuine, original testimonials from real clients can be read in our showroom's.

Independent awards and recognition.

We do not offer marketing testimonials.

Dealing with Lift Shop is fun and easy.

07

LOW SERVICE COSTS

Lift Shop only services and maintains its own quality lifts with full technical support and spares in Australia.

Other companies lifts distract from the attention good clients deserve.

We focus on you, with service plans tailored to your needs.

The large service team maintains 1000's of lifts.

See the mapping interface online for the service clients near you.

08

THE NO.1 HOME LIFT SPECIALIST

We are Australia's largest and best.

Lift Shop is a genuine full-service lift company with a range of premium proven home lifts.

We are the undisputed leader in Italian elevators.

We speak English, not jargon.

Our documents and quotes are clear and easy to understand.



*“luxury hotel style lifts
for your home”*

Why It's Great

- Australia's No.1 swing door home elevator
- Hydraulic
- The proven performer, since 2003
- Custom or pre-engineered to meet your budget
- Italy's very best
- Personalised for you
- Short lead times





Free Inclusions

- MUST HAVE In-Cabin Self Rescue (\$1,380)
- Free storage one month (\$970)
- Material transport from storage to site (\$990)
- 2100mm cabin ceiling height (\$1,500)
- Integrated Flush Phone (\$750)

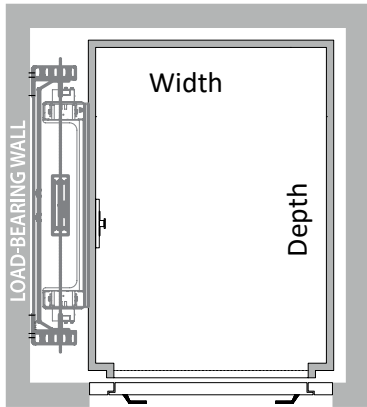


Specifications

Capacity:	3 - 6 persons 300 - 500kg
Speed:	Fast (0.15 – 0.30m/s) Approx 18 seconds for 3 floors
Power:	Single phase 240V, 32A Low energy consumption
Max travel:	6 floors 12m
Openings:	Single (1), opposite (2), adjacent (2)
Drive	Hydraulic
Headroom:	2400mm – 2600mm
Pit depth:	150 – 170mm
Compliance	AS1735.1 and NCC E3.6
In-cabin rescue:	Included

shafts by builder - designed to fit your space

single opening - side drive

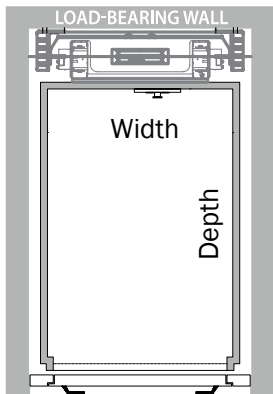


Cabin Width
Cabin Depth
Internal Shaft Width
Internal Shaft Depth

POPULAR HYDRAULIC SIZES							*
Cabin Width	800	1000	1000	1000	1200	1200	1100
Cabin Depth	1000	1000	1200	1300	1200	1300	1400
Internal Shaft Width	1150	1350	1350	1350	1550	1550	1450
Internal Shaft Depth	1160	1160	1360	1460	1360	1460	1560

CUSTOM SIZE - EXAMPLE FORMULA	
1120mm Cabin Width	+ 350 = 1470mm Shaft Width
1130mm Cabin Depth	+ 160 = 1290mm Shaft Depth

single opening - rear drive



Cabin Width
Cabin Depth
Internal Shaft Width
Internal Shaft Depth

POPULAR HYDRAULIC SIZES							*
Cabin Width	800	1000	1000	1000	1200	1200	1100
Cabin Depth	1000	1000	1200	1300	1200	1300	1400
Internal Shaft Width	960	1160	1160	1160	1360	1360	1260
Internal Shaft Depth	1360	1360	1560	1660	1560	1660	1760

CUSTOM SIZE - EXAMPLE FORMULA	
1130mm Cabin Width	+ 160 = 1290mm Shaft Width
1120mm Cabin Depth	+ 360 = 1480mm Shaft Depth

All shaft widths and depths may be affected by door sizes and/or subject to factory confirmation

All dimensions are in mm

Note maximum possible cabin area is 1.60m²

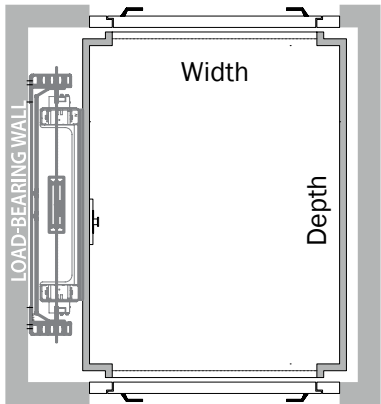
Shaft dimensions are internal sizes

Flush car operating panels increases cabin width by 20mm

* 1100mm (w) x 1400mm (d) required for compliant disabled access

* Some popular sizes are pre-engineered for short lead times and lower prices

opposite opening

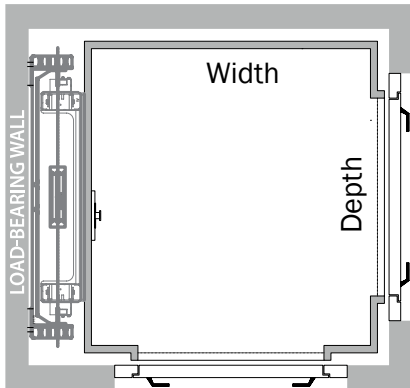


Cabin Width
Cabin Depth
Internal Shaft Width
Internal Shaft Depth

POPULAR HYDRAULIC SIZES							*
Cabin Width	800	1000	1000	1000	1200	1200	1100
Cabin Depth	1000	1000	1200	1300	1200	1300	1400
Internal Shaft Width	1150	1350	1350	1350	1550	1550	1450
Internal Shaft Depth	1160	1160	1360	1460	1360	1460	1560

CUSTOM SIZE - EXAMPLE FORMULA	
1120mm Cabin Width	+ 350 = 1470mm Shaft Width
1130mm Cabin Depth	+ 160 = 1290mm Shaft Depth

adjacent opening



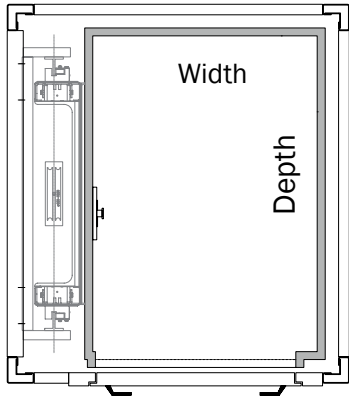
Cabin Width
Cabin Depth
Internal Shaft Width
Internal Shaft Depth

POPULAR HYDRAULIC SIZES							*
Cabin Width	800	1000	1000	1000	1200	1200	1100
Cabin Depth	1000	1000	1200	1300	1200	1300	1400
Internal Shaft Width	1160	1360	1360	1360	1560	1560	1460
Internal Shaft Depth	1160	1160	1360	1460	1360	1460	1560

CUSTOM SIZE - EXAMPLE FORMULA	
1120mm Cabin Width	+ 360 = 1480mm Shaft Width
1130mm Cabin Depth	+ 160 = 1290mm Shaft Depth

shafts by Lift Shop - designed to fit your space

single opening - side drive

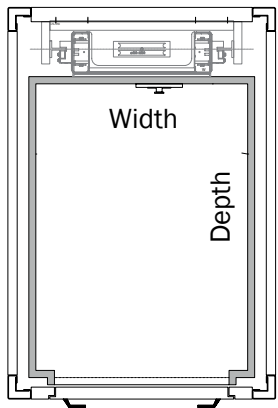


Cabin Width
Cabin Depth
External Shaft Width
External Shaft Depth

POPULAR HYDRAULIC SIZES							*
800	1000	1000	1000	1200	1200	1100	
1000	1000	1200	1300	1200	1300	1400	
1250	1450	1450	1450	1650	1650	1550	
1270	1270	1470	1570	1470	1570	1670	

CUSTOM SIZE - HYDRAULIC FORMULA	
1120mm Cabin Width	+ 450 = 1570mm Shaft Width
1130mm Cabin Depth	+ 270 = 1370mm Shaft Depth

single opening - rear drive



Cabin Width
Cabin Depth
External Shaft Width
External Shaft Depth

POPULAR HYDRAULIC SIZES							*
800	1000	1000	1000	1200	1200	1100	
1000	1000	1200	1300	1200	1300	1400	
1070	1270	1270	1270	1470	1470	1370	
1460	1460	1660	1760	1660	1760	1860	

CUSTOM SIZE - HYDRAULIC FORMULA	
1130mm Cabin Width	+ 270 = 1400mm Shaft Width
1120mm Cabin Depth	+ 460 = 1580mm Shaft Depth

All shaft widths and depths may be affected by door sizes and/or subject to factory confirmation

All dimensions are in mm

Note maximum possible cabin area is 1.60m²

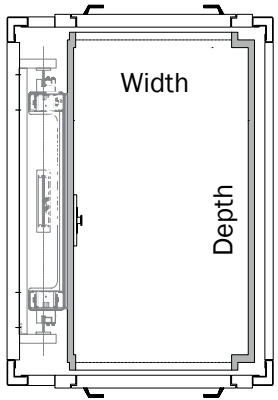
Flush car operating panels may affect cabin / shaft dimensions

* Shaft dimensions are external sizes (Please allow +50mm to width and depth dimensions for space provided)

* 1100mm (w) x 1400mm (d) required for compliant disabled access

* Some popular sizes are pre-engineered for short lead times and lower prices

opposite opening

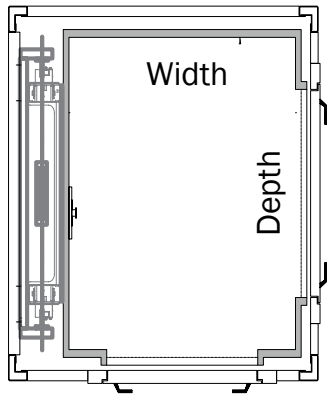


Cabin Width
Cabin Depth
External Shaft Width
External Shaft Depth

POPULAR HYDRAULIC SIZES							*
Cabin Width	800	1000	1000	1000	1200	1200	1100
Cabin Depth	1000	1000	1200	1300	1200	1300	1400
External Shaft Width	1250	1450	1450	1450	1650	1650	1550
External Shaft Depth	1270	1270	1470	1570	1470	1570	1670

CUSTOM SIZE - HYDRAULIC FORMULA	
1120mm Cabin Width	+ 450 = 1570mm Shaft Width
1130mm Cabin Depth	+ 270 = 1400mm Shaft Depth

adjacent opening



Cabin Width
Cabin Depth
External Shaft Width
External Shaft Depth

POPULAR HYDRAULIC SIZES							*
Cabin Width	800	1000	1000	1000	1200	1200	1100
Cabin Depth	1000	1000	1200	1300	1200	1300	1400
External Shaft Width	1260	1460	1460	1460	1660	1660	1560
External Shaft Depth	1270	1270	1470	1570	1470	1570	1670

CUSTOM SIZE - HYDRAULIC FORMULA	
1120mm Cabin Width	+ 460 = 1580mm Shaft Width
1130mm Cabin Depth	+ 270 = 1400mm Shaft Depth



types



Solid



Aluminium



Frameless Villa Door

finishes

Primed RAL 7001

RAL powdercoated

Anodized aluminium

Stainless Steel

handles



Quadro Handle



Style Short Handle



Style Long Handle

hotel style steel and glass shafts



Pre engineered shafts for internal and external applications are designed to be carried onto site through regular door openings.

The structural steel can be RAL powdercoated or merely galvanised for cladding by others.

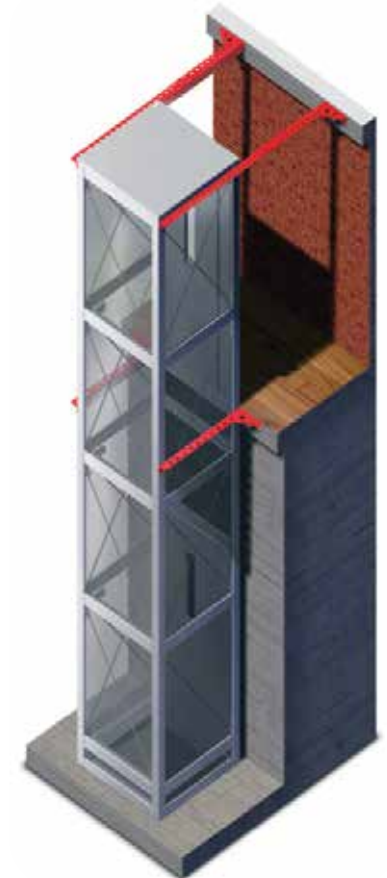
Stainless steel is also available, discuss with your designer.



Cross Bracing

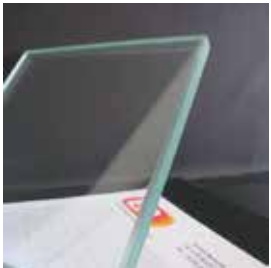


Ring Beams



Brackets

shaft cladding / structure / walls / doors



Transparent



Etched Neutral



Milky White



Fume Smoked



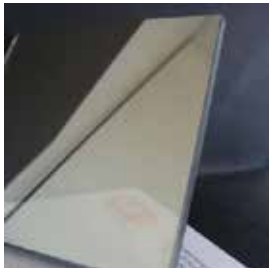
Pure White



Pub Nero Black



Stop-Sol Bronze Reflective



Stop-Sol Grey Reflective



Mirror Silver / Smoked / Bronze



Brushed Stainless Steel



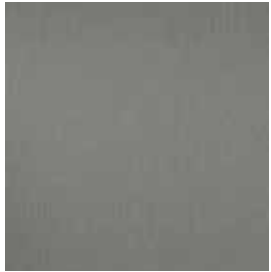
Polished Stainless Steel



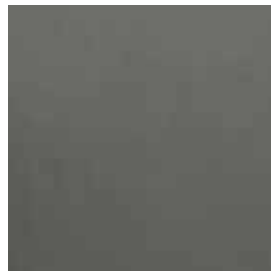
RAL Powdercoated



Italian Skinplate Finishes



F12PPS
Similinox



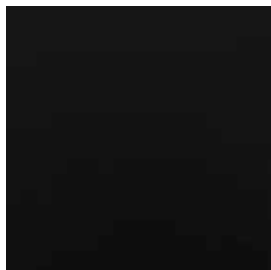
F41PPS
Stainless Look



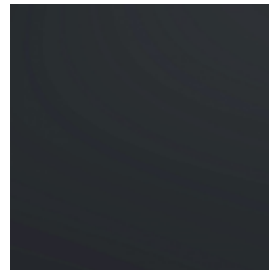
A490PP
Matte White



PPS11
Avorio



N3S
Matt Black



N4SA
Charcoal



DL36A
Dark Wood



DL8A
Whitewash Timber



DT29
Beige





Premium Laminate Finishes



3369



3320



3192



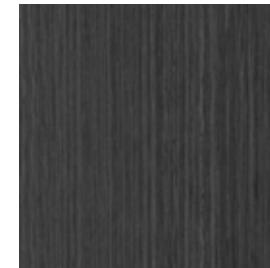
4520



4521



4611



4517



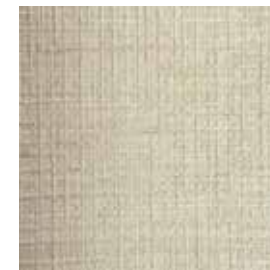
3318



4515



2620



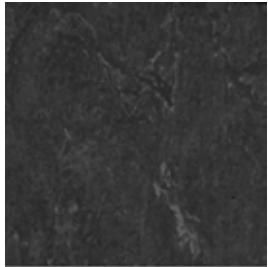
2619



2618



Vinyl Collection



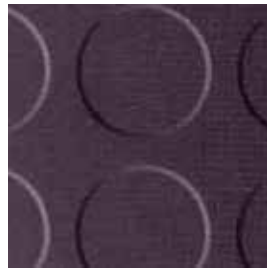
131 - 081
Private Black



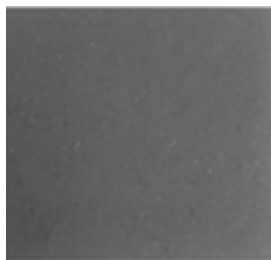
158
Tabac Grey



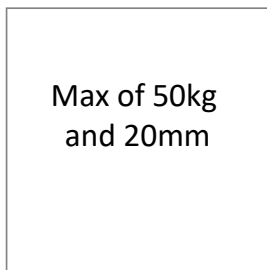
121 - 056
Foggy Blue



Dotted Rubber
Black



0082
Broken Grey



Max of 50kg
and 20mm

Custom

Stone Collection



2400



607
Polar Ice



Black Star



616
Perla Bianca

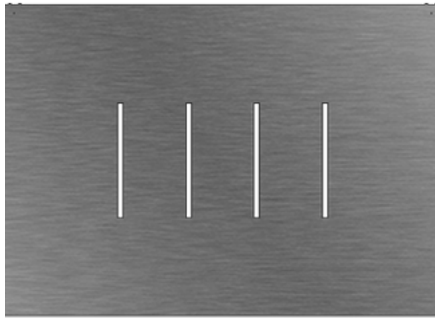


Dove Tail





Energy Efficient LEDs



Line



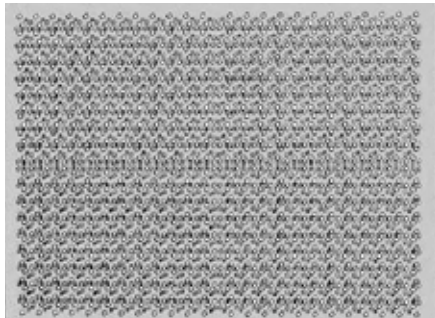
Regular



Labirint



LED Spotlights



Starry Sky



Ceiling Finishes
Skinplate
RAL
Stainless Steel



Aluminium



Brushed Stainless Steel



Polished Stainless Steel

car operating panels and accessories

Models



Vertical



Silver



Key Switch



Machine cabinet
700mm x 560mm x 1535mm
F12PPS skinplate



Blue Display



Security Keypad



GSM phone
NBN ready emergency
system

Flush mounted phones



Finishes

- Skinplate (n/a flush)
- Galvanized
- Stainless Steel (brushed or polished)
- RAL Powdercoated



SHOWROOMS

SYDNEY

1/75 Corish Circle
Eastgardens NSW 2036
02 9666 3939

MELBOURNE

1/1 Belgium Ave
Richmond VIC 3121
03 9421 4222

BRISBANE

4/300 Cullen Ave E
Eaglefarm QLD 4009
07 3014 0633

CANBERRA

1/8 Beaconsfield St
Fyshwick ACT 2609
02 9666 3939

PERTH

15/75 Robinson Ave
Belmont WA 6104
08 9460 0666

CALIFORNIA

10940 Kalama River Ave
Fountain Valley CA 92708
01 855 326 8847

Disclaimer

All illustrations, information and specifications presented and referred to in this brochure were correct at the time when this brochure was approved for printing. The colour in the photographs may vary from actual colours, however **LiftShop** Pty Ltd reserves the right, subject to laws of Australia and/or the regulations of any competent authority which may apply from time to time, at its discretion at anytime and without prior notice to discontinue or change the models, features, specifications, designs and prices of the products referred to in this brochure and any optional equipment therefore without incurring any liability whatsoever to any purchaser or prospective purchaser of any such products.